

# 'Oku palopalema'ia 'a e fanongo 'a ho'o tama?



Kapau ko ia, 'oku ma'u atu 'i he pepa´ ni 'a e fakamatala fekau'aki mo e ngaahi sēvesi 'oku ala ma'u atu mei´ he ngaahi potungāue 'a e pule'anga´ mo ha ngaahi kautaha kehe ke tokoni'i koe.

Ngaahi Sēvesi Tokoni ki he Faingata'a'ia Fakaesino'

‘Oku malava ke palopalema‘ia ‘a e fanongo ‘a ho‘o tama’ kapau ‘oku’ ne ma‘u ‘a e ngaahi faka‘ilonga ko ‘eni’:

### **Pēpē ‘oku’ i lalo hifo ‘i he māhina ‘e ono’ ‘a hono ta‘u motu‘a’**

- ‘Oku ‘ikai ke fakatokanga ki he ongo’, pe ‘ā hake ‘i ha longoa‘a
- ‘Oku ‘ikai ke tafoki ‘a hono ‘ulu ki ho le‘o ‘i he‘ene a‘u ki he māhina ‘e 4-6

### **Pēpē māhina ‘e 6-12**

- ‘Oku ‘ikai ke ne fakatokanga‘i ‘a e ngaahi fo‘i lea’ pe mahino‘i ‘a e ngaahi sētesī faingofua’

### **Fānau ta‘u 1-2**

- ‘Oku ‘ikai fakatokanga‘i pe feinga ke ‘ilo‘i ‘a e ongo’
- ‘Oku ‘ikai ke ne fa‘ifa‘itaki pe toutou lea‘aki ‘a e ngaahi fo‘i lea’ pe ongo ki he fetu‘utaki’
- ‘Oku fa‘a fakafalala pe ‘i he ngaahi me‘a ‘oku lava ke sio ki ai’

### **Fānau ta‘u 3 mo laka hake ai’**

- Tuai ‘a ‘ene lea’ ‘i hono fakahoa ki he fānau kehe’ kae ta‘u tatau’
- Talanoa le‘o lahi
- Le‘o lahi ‘a e televīsone ‘oku fanongo ki ai’
- Fa‘a nounou ‘a e taimi ‘oku tuku ai ‘ene tokanga’ ki ha me‘a
- Fa‘a palopalema ‘a e ngaahi tō‘onga’
- ‘Oku ala faingata‘a ke muimui pe mahino‘i ‘a e ngaahi fehu‘i lea’ pe fakahinohino’

Ko e vave ange ‘a ho‘o ma‘u atu ha tokoni, ko e lelei ange ia kiate koe, ho‘o tama’, fāmili’ mo e kāinga’. Kātaki ‘o fetu‘utaki ki ho‘o toketaa’, neesi’ pe mataotao ki he fanongo’ (audiologist) ‘i he vave taha’.

## **‘E anga fēfē ke ma‘u ha tokoni ki he‘eku tama?**

‘Oku ala ma‘u ta‘etotongi atu ‘a e ngaahi sēvesi ki he fanongo’ ki ho‘o tama’ kae ‘oua kuo nau nofo mei’ he ako’.

## **Ko e hā ‘a e ngaahi sēvesi ‘oku ala ma‘u atu?**

**Potungāue Mo‘ui (Ministry of Health)**



MANATŪ HAUORA

## **Sivi'i 'a e Fanongo 'a e pēpē toki fā'ele'i** **(Newborn Hearing Screening)**

Ko e sivi ta'etotongi' ni te ne ma'u ai ha ngaahi palopalema toki kamata pe lahi ange fekau'aki mo e mole 'a e fanongo'. Ko e sivi' ni 'oku malava ke fakahoko kimu'a 'i ho'o 'atā mo ho'o pēpē mei' he falemahaki' ki 'api'. Te ke ala fakahoko mo ha sivi 'i he va'a kiliniki ki tu'a 'a ho'o falemahaki'. Kapau 'oku toe fiema'u ha sivi, 'e fakahoko leva 'e he Mataotao ki he fanongo' 'a e ngaahi sivi' ni. 'Oku 'ikai ke totongi 'a e ngaahi sēvesi' ni. Kapau 'oku palopalema 'a e fanongo 'a ho'o tama', 'e tala atu 'e he Mataotao ki he fanongo' 'a e tokoni 'e ala ma'u atu ki ho'o pēpē, fāmili' mo e kāinga'.



Ki ha fakamatala fakaikiiki, fetu'utaki ki he National Screening Unit, Potungāue Mo'ui: [www.nsu.govt.nz](http://www.nsu.govt.nz), [screening@moh.govt.nz](mailto:screening@moh.govt.nz) pe ko ho'o neesi mā'uli', toketaa', toketā ki he fānau', falemahaki 'i ho feitu'u', pe kautaha 'oku' ne 'oatu 'a e Sēvesi Mo'ui Lelei Ma'ae Fānau (Well Child).

## **Sivi 'o e Fanongo' – Sēvesi Mo'ui Lelei Ma'ae Fānau/Tamariki Ora**

Ko e Sēvesi Mo'ui Lelei Ma'ae Fānau/Tamariki Ora 'oku 'oatu ta'etotongi ia ki he fānau uike 'e 4-6 ki he ta'u nima, pea kau ki ai mo e ngaahi fehu'i fekau'aki mo e fanongo 'a ho'o tama'. 'Oku fakahoko atu 'e he Palaniketi' (Plunket) mo e ngaahi kautaha felāve'i kehe' 'a e ngaahi Sēvesi Mo'ui Lelei Ma'ae Fānau /Tamariki Ora. Te ke ala fetu'utaki hangatonu ki he Palaniketi 'i ho feitu'u' pe ni'ihi kehe 'oku nau 'oatu 'a e Sēvesi Mo'ui Lelei Ma'ae Fānau ke fokotu'utu'u ha'o sio kiate kinautolu, pe ko ho'o telefoni ki he PlunketLine 'i he fika 0800 933 922 ke ma'u atu 'a e founga ke ke fetu'utaki ai ki he kautaha 'oku nau fakahoko 'a e Sēvesi Mo'ui Lelei Ma'ae Fānau 'i ho feitu'u'.



Ko e Sivi Ta'u 4 Kimu'a 'i he Ako 'a e sivi Mo'ui Lelei Ma'ae Fānau hono valu'. 'Oku 'oatu ta'etotongi ia ki he fānau ta'u fā', pea kau ki ai 'a hono sivi'i 'o e fanongo' 'e he tokotaha Ngāue ki he Vakai' mo e Fanongo' (Vision and Hearing Technician). Vakai ki he [www.moh.govt.nz/b4schoolcheck](http://www.moh.govt.nz/b4schoolcheck) pe telefoni ki he PlunketLine 'i he fika 0800 933 922 ke ma'u atu 'a e founga ke ke fetu'utaki ai ki he tokotaha 'oku' ne fokotu'utu'u 'a e Sivi Ta'u 4 Kimu'a 'i he Ako (B4 School Check) 'i ho feitu'u'.

## Ngaahi Naunau Tokoni' (Assistive Devices)



### *Ngaahi Naunau Tokoni ki he Fanongo'*

'Oku fakapa'anga kakato 'e he Potungāue Mo'ui 'a e ngaahi naunau tokoni ki he fanongo 'a e fānau ako kinitakāteni' mo e fānau lolotnga ako', 'o a'u ki he'enau ta'u 21 kapau 'oku nau kei ako taimi kakato. 'Oku fokotu'u 'a e konga lahi 'o e ngaahi naunau tokoni ki he fanongo' 'i he ngaahi falemahaki 'a e pule'anga'. 'Oku toe ala fai pe foki 'a e ngāue' ni 'e he ngaahi kilīniki telinga taautaha', kā 'e ngali fiema'u ia ke ke totongi 'a e ngāue' ni.

'Oku 'oatu ta'etotongi 'a e fakamaka', tauhi mo hono fakalelei'ī 'o e ngaahi naunau fanongo ki he fānau iiki' 'e he ngaahi senitā Ako ki he Kakai Tuli' (Deaf Education Centres). 'E fetu'utaki 'a e ngaahi fāmili 'i he ngaahi feitu'u ki he fakatonga (south) 'o New Plymouth, Taupo mo e East Coast, pea kau ki ai mo e motu Saute' (South Island), ki he van Asch Deaf Education Centre, kae fetu'utaki 'a e ngaahi fāmili 'i he ngaahi feitu'u ki he fakatokelau 'o Taupo' ki he Kelston Deaf Education Centre.

### *Sisitemi FM (FM System)*

'Oku 'i ai mo e ngaahi sisitemi FM 'e ala ma'u atu ki he fānau 'oku nau ngāue'aki 'a e naunau tokoni ki he fanongo'. Ko e naunau eni 'oku' ne tukuatu 'a e ongo' ki he fānau iiki' 'o fakafou 'i ha me'afanongo kuo fakapipiki ki he naunau tokoni ki he fanongo', pea 'oku ngāue'aki ke tokoni'i 'a e fonongo 'a ha fānau iiki 'oku palopalema 'a 'ene fanongo ki he faiako' 'i he loki ako'.

'E ala fakapa'anga 'e he Potungāue Ako ha sisitemi FM ma'ae fānau kei ta'u ako'. 'E toe ala fakapa'anga foki 'e he Potungāue Mo'ui 'a e sisitemi FM ma'ae fānau kinitakāteni'.

Ki ha fakamatala fakaikiiki, fetu'utaki ki he Va'a ki he Kau Faingata'a'ia' (Special Education) 'i he Potungāue Ako: 0800 622 222, [special.education@minedu.govt.nz](mailto:special.education@minedu.govt.nz), [www.minedu.govt.nz/goto/specialeducation](http://www.minedu.govt.nz/goto/specialeducation), pe fetu'utaki ki he kilīniki telinga' (audiology clinic) 'i he Poate Fakavahe ki he Mo'ui' (District Health Board) 'i ho feitu'u'.

## Tafa fakanaunau ki he telinga´ (Cochlear implants)

‘Oku fakapa´anga ‘e he Potungāue Mo‘ui ‘a e ngaahi tafa ke fakahū ‘a e ngaahi naunau ki ha telinga´ ‘o e fānau ‘oku nau ‘atā ki ai’ mo palopalema lahi ‘a ‘ene fanngo’ pea ‘ikai ‘aonga ki ai ‘a e ngaahi naunau tokoni ki he fanongo’.

Kapau ‘oku ‘ikai te ke nofo ‘i he ngaahi senita tefito´, ‘e ala fua ‘a e fakamole ki ho‘o fononga ki he falemahaki´ ke sivi ho‘o fanongo´, fakahoko ‘a e tafa´ mo e ngaahi ‘apoinimeni ‘a muiange´, ‘e he National Travel Assistance Scheme. Te ke ma‘u atu hano fakaikiiki mei ha‘o telefoni ki he 0800 281 222 pe uepisaiti ‘a e Potungāue Mo‘ui [www.moh.govt.nz/travelassistance](http://www.moh.govt.nz/travelassistance).

Ki ha toe fakamatala makehe, fetu‘utaki ki he Mataotao ki he fanongo´ ‘i ho feitu‘u’ pe tokotaha Fale‘i ki he Fānau Tuli’ (Advisor on Deaf Children).



### ACC

Kapau na‘e lavea ha ki‘i leka ‘o uestia ai ‘a ‘ene fanongo’ pea na‘e tupu mei’ ha fakatu‘utāmaki na‘e hoko ai ha pā le‘o lahi, pe lavea ‘oku faito‘o, ‘e ala tokoni atu ‘a e ACC ki hono fua ‘o e ngaahi fakamole fakafaito‘o mo e ngaahi tokoni fakapa´anga kehe. ‘Oku ‘ikai kau ki heni ‘a e palopalema ki he fanongo´ ‘a e fānau ‘a ia ne tupu mei ha puke, tupu mei manava, pe mahaki tukufakaholo.

Fetu‘utaki ki he ACC, ‘o talanoa ki he lavea ‘a ho‘o tama ‘i he telefoni: 0800 101 996.



### Ako

‘Oku fakahoko ‘a e ako mo e ngaahi sēvesi kehekehe ki he meimei kotoa ‘o e fānau ako´ ‘i he‘enau ngaahi ako´anga’. Kapau ‘e ‘ilo‘i ‘e he Mataotao ki he fanongo´ ha palopalema ki he fanongo´ ‘a ho‘o tama’, tenau ala ma‘u atu ha tokoni mei’ ha tokotaha Fale‘i ki he Fānau Tuli’ (Advisor on Deaf Children). ‘Oku ‘ikai totongi ‘a e sēvesi ko‘eni’. ‘E talanoa atu ‘a e tokotaha Fale‘i ki he tokoni te ke ala ma‘u atu mo ho‘o tama’.

‘E ala talanoa atu foki ‘a e tokotaha Fale‘i’ fekau‘aki mo e ngaahi senitā Ako ki he Kakai Tuli’ (Deaf Education Centres) ‘o hangē ko e van Asch mo Kelston. ‘Oku ‘oatu ‘a e ako mo e tokoni’ ‘e he ngaahi senitāa’ ni ki he fānau ‘oku tuli pe palopalema‘ia ‘enau fanongo’, pea ‘oku ala fakahoko fakalotofale eni ‘i he taimi ‘e ni‘ihi.

Kapau ko ha tokotaha Mauli koe, ‘e fakaafe‘i atu koe ke ke fe‘iloaki mo ha tokotaha Ako Makehe ki he kau Mauli’ (Maori Special Education) ‘oku ui ko e Kaitakawaenga, kimu‘a ho‘o sio ki ha tokotaha Fale‘i.

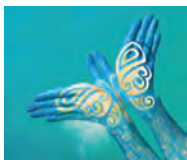
Ki ha fakamatala fakaikiiki, fetu‘utaki ki he Va‘a ki he Kau Faingata‘a‘ia’ ‘i he Potungāue Ako: 0800 622 222, [special.education@minedu.govt.nz](mailto:special.education@minedu.govt.nz), [www.minedu.govt.nz/goto/specialeducation](http://www.minedu.govt.nz/goto/specialeducation).



### Telefoni

Kapau ‘oku faingata‘a ‘a e fanongo ‘a ho‘o tama ‘i he telefoni’, te ne ala ngāue‘aki ‘a e New Zealand Relay service. Te ke ngāue‘aki ha telefoni makehe ‘o tā ai ki he tokotaha tali telefoni’ mo taipe‘i ‘a e me‘a ‘oku’ ke fie lea ki ai’. ‘E lau atu leva ‘e he tokotaha tali telefoni’ ‘a ho‘o fekau’ ki he tokotaha ‘oku’ ke telefoni ki ai’. ‘E taipe‘i ‘e he tokotaha tali telefoni’ ‘a e tali ‘oku ‘omi mei’ he tokotaha ‘oku’ ke telefoni ki ai’ pea ‘e hā eni ‘i he mata ‘o ho‘o telefoni’. ‘Oku malu ‘a e kotoa ‘o e ngaahi fetalanoa‘aki telefoni’ pea ‘oku ‘ikai tauhi ‘a e lekooti ‘o e ngaahi talanoa’ ni.

Ki ha fakamatala fakaikiiki, fetu‘utaki ki he NZ Relay: 0800 4715 715, [info@nzrelay.co.nz](mailto:info@nzrelay.co.nz), [www.nzrelay.co.nz](http://www.nzrelay.co.nz).



### Lea Faka‘ilonga ‘a Nu‘u Sila’ (New Zealand Sign Language)

Ko e New Zealand Sign Language (NZSL) ‘a e taha ‘o e ngaahi lea faka‘ofisiale ‘e tolu ‘a Nu‘u Sila’. ‘Oku kau ki ai ‘a e ngaahi faka‘ilonga ‘o ngāue‘aki ‘a e nima’, mata’ mo e sino’. ‘Oku ma‘u ‘i he NZSL ‘a e ngaahi fakakaukau, fa‘unga lea mo e ngaahi lea ‘oku ‘ikai ma‘u ‘i ha toe lea faka‘ilonga nima kehe, ‘o kau ki ai ‘a e ngaahi faka‘ilonga ki he ngaahi lea mo e fakakaukau fakaMauli’ (Te Reo Maori). ‘Oku tokoni ‘a e kau fakatonu lea NZSL ke fakapapai‘i ‘oku ‘inasi ‘a e kakai Tuli’ ‘i he ngaahi fakamatala’ mo e tokoni’. Te ke ala kole ‘a e tokoni ‘a ha tokotaha fakatonu lea ‘i he Deaf Aotearoa New Zealand.

## Tohi fakamatala‘i he Televīsonē’

‘Oku ala ‘oatu ‘a e ngaahi lea tohi mata‘itohi (ki he kakai Tuli‘ mo ‘ikai lelei ‘enau fanongo’)



‘i he konga lahi ‘o e ngaahi polokalama ‘a e TV ONE, TV2, TV3, pea mo e ngaahi polokalama TV kehe. ‘Oku ‘ikai totongi ‘a e ngaahi sēvesi‘ ni he ‘oku fakapa‘anga ‘e he NZ On Air pea fakalele ‘e he TVNZ. ‘Oku ‘i ai ‘a e faka‘ilonga telinga ‘i he kamata‘anga ‘o e ngaahi polokalama televīsonē’ ke fakahaa‘i ‘oku ‘i ai ‘a e ngaahi tohi fakamatala‘i ‘a e ngaahi felea‘aki ‘i he polokalama’.

Ki ha fakamatala fakaikiiki fekau‘aki mo e ngaahi polokalama ‘oku tohi mata‘itohi’ pea mo e founa hono ma‘u atu‘o e ngaahi tohi mata‘i tohi‘ni: 09 916 7392, [www.tvnz.co.nz/captioning](http://www.tvnz.co.nz/captioning), [captioning@tvnz.co.nz](mailto:captioning@tvnz.co.nz).

## Teu ala ma‘u ha tokoni makehe ki he ngaahi fakamole?

‘Oku ‘ikai ke fa‘a totongi ‘a e ngaahi sivi mo e sēvesi ki he fanongo ‘a e fānau.



### Work and Income

‘Oku ala ma‘u atu foki mo ha tokoni fakapa‘anga, kau ki ai ‘a e:

- *Tokoni Fakapa‘anga ki he Fānau Faingata‘a‘ia Fakaesino’ (Child Disability Allowance):* Ko e tefito‘i tokoni fakapa‘anga eni ki ha tokotaha ‘oku tauhi ki ha to‘utupu ‘oku si‘i hifo ‘a hono ta‘u motu‘a’ ‘i he ta‘u 18 pea ‘oku puke lahi pe faingata‘a‘ia fakaesino ‘o fiema‘u ai ke tokanga‘i ‘i he taimi kotoa pe.
- *Tokoni ki he Faingata‘a‘ia Fakaesino’ (Disability Allowance):* Ko e Disability Allowance ‘oku fakataumu‘a ia ki he kakai ‘oku ‘i ai ‘enau ngaahi fakamole makehe mo hokohoko tupu mei’ ha‘anau faingata‘a‘ia fakaesino pe mahamahaki. Ko e tokoni fakapa‘anga ko‘eni’ ‘oku ala ma‘u atu ia ki he kakai lalahi mo e fānau ‘oku si‘i hifo honau ta‘u motu‘a’ ‘i he ta‘u 18. ‘E tokoni eni ki ho‘o totongi ‘a e ngaahi me‘a ‘o hangē ko ho‘o sio anga maheni ki he toketaa’, ngaahi faito‘o’, me‘atokoni makehe pe fefononga‘aki koe‘uhi ko ha‘o mahamahaki pe faingata‘a‘ia fakaesino.

‘Oku ‘i ai foki mo e ngaahi tokoni fakapa’anga pe totongi pa’anga tokamu’a ‘e ala ma’u atu ‘e he Work and Income kapau ‘e ‘ikai malava ke ke totongi ‘a ho’o ngaahi fiema’u tefito’. ‘E vakai’i ‘e he Work and Income ‘a ho tu’unga fakapa’anga’ ke siofi pe ko e hā ‘a e tokoni ‘e ala ‘oatu’ — ‘oku ‘ikai fiema’u ia ke ke tomu’a ma’u penefiti kae toki ma’u atu ‘a e ni’ihi ‘o e ngaahi tokoni’ ni.

Ki ha fakamatata fakaiiki, fetu’utaki ki he Work and Income: 0800 559 009, [www.workandincome.govt.nz](http://www.workandincome.govt.nz).

Kapau ‘oku’ ke Tuli, uesia ‘a ho’o fanongo’, pe faingata’a ‘a ho’o fetu’utaki ‘i he telefoni’, te ke ala fetu’utaki ki he Work and Income ‘i he: Deaf Link free-fax (fax ta’etotongi ‘a e Deaf Link): 0800 621 621 Telephone typewriter (telefoni taibe): 0800 111 113 Text: 029 286 7170 Email: [MSD\\_Deaf\\_Services@msd.govt.nz](mailto:MSD_Deaf_Services@msd.govt.nz).

Te ke toe ala sio foki ki he tokonia ‘o e kau ngāue tauhi’ ‘i he [www.msd.govt.nz/what-we-can-do/community/carers/index.html](http://www.msd.govt.nz/what-we-can-do/community/carers/index.html).

## ‘E ma’u atu ha ngaahi fakamatata fakaiiki mei’ he:



### Deaf Aotearoa New Zealand

Tel: 09 828 3282, [national@deaf.co.nz](mailto:national@deaf.co.nz),  
[www.deaf.org.nz](http://www.deaf.org.nz).

‘Oku ‘oatu ‘e he Deaf Aotearoa ha ngaahi polokalama ako, pou pou ki he ma’u ngāue’ mo tuku atu ‘a e ngaahi fakamatata ki he kakai Tuli’ mo kinautolu ‘oku uesia ‘enau fanongo’. ‘Oku’ ne ma’u mo fakalele ‘a e iSign, ko e sēvesi uepisaiti ‘a Nu’u Sila ki hono fokotu’utu’u (bookings) ‘o e kau fakatonu lea NZSL, ‘oatu ‘a e ngaahi polokalama ako ki he ‘ilo ‘a e kakai Tuli’, mo e ngaahi polokalama ki he komiuniti’ pea mo hono fokotu’utu’u ‘i he ta’u kotoa ‘a e Uike Lea Faka’ilonga ‘a Nu’u Sila’ (NZ Sign Language Week).

### Enable Information Services

Tel: 0800 17 1981, [info@enable.co.nz](mailto:info@enable.co.nz),  
[www.disabilityfunding.co.nz](http://www.disabilityfunding.co.nz).



‘Oku ‘oatu ‘e he Enable Information ‘a e ngaahi fakamatata ta’etotongi mo fakamuimui taha’, fekau’aki mo e faingata’a’ia fakaesino.





## Kelston Deaf Education Centre

Tel: 09 827 4859, [kdec@kdec.school.nz](mailto:kdec@kdec.school.nz),  
[www.kdec.school.nz](http://www.kdec.school.nz).

Ko e Kelston Deaf Education Centre ko ha ‘apiako ma’ae fānau Tuli mo palopalema‘ia ‘enau fanongo’ mo honau ngaahi fāmili’ ‘i he ngaahi feitu‘u ‘o ‘Aokalani, Northland, Waikato pea mo Bay of Plenty.

## Ngaahi Sēvesi Tokoni ‘a e Potungāue Mo‘ui ki he Faingata‘a‘ia Fakaesino’ (Ministry of Health Disability Support Services)

Tel: 0800 373 664, [disability@moh.govt.nz](mailto:disability@moh.govt.nz),  
[www.moh.govt.nz/disability](http://www.moh.govt.nz/disability).



MANATŪ HAUORA



## National Foundation for the Deaf Inc (NFD)

Tel: 0800 867 446, [enquiries@nfd.org.nz](mailto:enquiries@nfd.org.nz),  
[www.nfd.org.nz](http://www.nfd.org.nz).

‘Oku pou pou‘i ‘e he NFD ‘a e kakai ‘o Nu‘u Sila’ ni ‘oku palopalema ‘enau fanongo’ pea mo faka‘ai‘ai foki mo hono fakatolonga ‘o e fanongo’. ‘Oku’ ne faka‘ai‘ai ‘a hono tokangaekina ‘o e kakai ‘oku palopalema‘ia ‘enau fanongo’ ‘aki hono fakahoko ‘a e taukapo, ngaahi polokalama ako ki he kakai’, ngaahi fakamatala, fekumi mo e ngaahi sikolasipi. Ko e NFD ko ha sōsaieti kuo lēsisita (incorporated society) fakataha mo ha ngaahi kautaha mēmipa fakalūkufua ‘e ono, kau ki ai ‘a e Hearing Association, NZ Federation for Deaf Children, mo e ngaahi kulupu ngāue fakapalōfesinale ‘i he tafa‘aki ki he faingata‘a‘ia ‘o e fanongo’.

## New Zealand Audiological Society

Tel: 0800 625 166, [mail@audiology.org.nz](mailto:mail@audiology.org.nz),  
[www.audiology.org.nz](http://www.audiology.org.nz).



Ko e New Zealand Audiological Society ‘a e kautaha fakapalōfesinale ‘a e kau Mataotao ki he fanongo’s ‘a ia kuo nau ma‘u faka‘ilonga mei’ he ngaahi ako faka‘univēsiti’ pea ‘oku nau ngāue fakatatau ki he ngaahi tu‘utu‘uni faka‘ēfika (code of ethics). ‘E ma‘u atu ‘a e fakamatala fekau‘aki mo e palopalema ki he fanongo’ pea mo e ngaahi feitu‘u ‘oku ngāue ai ‘a e kau Mataotao ki he fanongo’ ‘o tatau pe ‘i he ngaahi kilīniki ‘a e pule‘anga’ mo e taautaha’ ‘i he ‘enau uepisaiti’.



## NZ Federation for Deaf Children Inc

Tel: 0800 332 324, [deafchildren@xtra.co.nz](mailto:deafchildren@xtra.co.nz),  
[www.deafchildren.org.nz](http://www.deafchildren.org.nz).

‘Oku’ ne ‘oatu ‘a e tokoni, fakamatala mo e faingamālie ke feohi ‘a e ngaahi mātu‘a’ ‘a e fānau tuli’, pea mo e pou pou ki he fānau’.

## Ko e New Zealand Society of Otolaryngology, Tafa ki he ‘Ulu’ mo e Kia’ (Head & Neck Surgery)

[www.orl.org.nz](http://www.orl.org.nz).

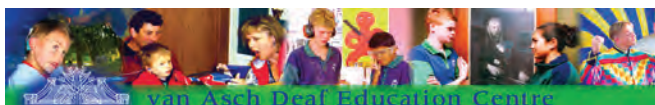


Ko e Sōsaieti’ ni ko ha kautaha fakapalōfesinale ki he kau Otolaryngologists. Ko e kau Otolaryngologists ko ha kau toketa kuo fakakakato ‘enau ngaahi ako makehe ki hono faito’o mo tafa ‘o e ngaahi mahaki ki he telinga’, ihu’ mo e kia’, kau ki ai mo e palopalema’ia ‘i he fanongo’. Kapau ‘oku’ ke fie sio ki ha Otolaryngologist, kole ki ho’o toketaa ke ne fakafehokotaki ko e, pe ko ho’o fekumi pe ki he Otolaryngologist ofi taha atu ‘o ngāue‘aki ‘a e me‘angāue Doctor Search ‘i he uepisaiti’.

## Senitā Ako van Asch ki he Tuli’ (van Asch Deaf Education Centre)

Tel: 03 326 6009, [info@vanasch.school.nz](mailto:info@vanasch.school.nz), [www.vanasch.school.nz](http://www.vanasch.school.nz).

Ko e van Asch Deaf Education Centre ko ha ‘api ako makehe ‘oku’ ne fakahoko ha ngaahi sēvesi fakaako ki he fānau Tuli’ mo honau ngaahi fāmilī’ ‘i he kotoa ‘o e Motu Saute’ (South Island) pea mo e kongā ki lalo ‘o e Motu Noate’ (North Island). ‘Oku’ ne ‘oatu ha ngaahi sēvesi fakalotofale ki he fānau kei ta‘u ako’, ngaahi naunau ke pou pou ki he ngaahi polokalama ako ‘a e fānau’, ngaahi tokoni ki he fanongo’ mo e ngaahi sēvesi fakatekinikale ki he ngaahi naunau fanongo’ mo hono ngaahi me‘a felāve‘i, tekinolosia ki he tafa fakanaunau ‘o e telinga’ mo e ngaahi sēvesi ki he fakaakeake’.



## Ngaahi nouti

Pulusi 'e he Potungāue Mo'ui  
(Ministry of Health), Sune 2010  
PO Box 5013, Wellington



ISBN 978-478-0-36645-7 (pulusi)  
ISBN 978-0-478-36646-4 (laine 'initaneti)  
HP 5191

New Zealand Government