

Primary Health Organisation
DATA MART - DATA DICTIONARY

Version 1.2
September 2011



Reproduction of material

The Ministry of Health ('the Ministry') permits the reproduction of material from this publication without prior notification, providing all the following conditions are met: the information must not be used for commercial gain, must not be distorted or changed, and the Ministry must be acknowledged as the source.

Disclaimer

The Ministry of Health gives no indemnity as to the correctness of the information or data supplied. The Ministry of Health shall not be liable for any loss or damage arising directly or indirectly from the supply of this publication.

All care has been taken in the preparation of this publication. The data presented was deemed to be accurate at the time of publication, but may be subject to change. It is advisable to check for updates to this publication on the Ministry's web site at <http://www.moh.govt.nz>

Publications

A complete list of the Ministry's publications is available from the Ministry of Health, PO Box 5013, Wellington, or on the Ministry's web site at <http://www.moh.govt.nz>

Any enquiries about or comments on this publication should be directed to:

Analytical Services

Ministry of Health

PO Box 5013

Wellington

Phone: (04) 922 1800 Fax: (04) 922-1899

Email: data-enquiries@moh.govt.nz

Published by Ministry of Health

© 2011, Ministry of Health

Introduction

Objectives

The objectives of the Ministry of Health ('the Ministry') Data Dictionaries are to:

- describe the information available within the National Collections
- promote uniformity, availability and consistency across the National Collections
- support the use of nationally agreed protocols and standards wherever possible
- promote national standard definitions and make them available to users.

It is hoped that the greater level of detail along with clear definitions of the business rules around each element will assist with providing and using the data.

Audiences

The target audiences for Data Dictionaries are data providers, software developers, and data users.

Format

All data element definitions in the Data Dictionaries are presented in a format based on the Australian Institute of Health and Welfare National Health Data Dictionary. This dictionary is based on the ISO/IEC Standard 11179 *Specification and Standardization of Data Elements*—the international standard for defining data elements issued by the International Organization for Standardization and the International Electrotechnical Commission.

The format is described in detail in the appendices of this dictionary.

Changes to dictionary format

A more rigorous approach to recording changes in the data elements has been introduced in these dictionaries along with background material on the features of time-series data for each element.

In summary, the changes to the data dictionaries include:

- standardisation of the element names so that, for instance, a healthcare user's NHI number is referred to as NHI number in all collections
- elements are listed alphabetically within each table, and the tables are organised alphabetically
- each table is described
- verification rules, historical information, and data quality information are included
- alternative names for the elements are listed
- information about how the data is collected is given
- related data, and references to source documents and source organisations are included
- an alphabetical index is included
- code tables are included with the element, or a reference given to the Ministry's web site (for large or dynamic code tables).

Table of Contents

Primary Health Organisation Enrolment.....	5
Census Fact table	7
Age.....	8
Census ethnicity 1996.....	9
Census ethnicity 2001.....	10
DSS Count.....	11
Domicile Code.....	12
Population.....	13
Sex.....	14
Year.....	15
FFS Washup Fact table	16
Actual ffs deduction amount.....	17
Amount payable.....	18
CBF nhi number.....	19
DSS count.....	20
Encrypted cbf nhi.....	21
Fee amount.....	22
Internal patient id.....	23
Match id.....	24
NHI number.....	25
payee number.....	26
PHO Enrolment Fact table	27
Address uncertainty.....	28
CSC expiry date.....	29
CSC number.....	30
CSC submitted.....	31
Careplus end date.....	32
Careplus enrolment status.....	33
Careplus start date.....	34
DHB name.....	35
DSS count.....	36
Date of birth.....	37
Deprivation quintile.....	38
En careplus end date.....	39
En careplus enrolment status.....	40
En careplus start date.....	41
En csc expiry date.....	42
En csc number.....	43
En csc valid.....	44
En deprivation quintile.....	45
En dhb.....	46
En health care user id.....	47
En huhc expiry date.....	48
En huhc number.....	49
En huhc valid.....	50
En meshblock.....	51
En nhi matching type.....	52
En patient death date.....	53
En x coordinate.....	54
En y coordinate.....	55
Encrypted NHI number.....	56
Encrypted hcu status.....	58
Ethnic group 1.....	59
Ethnic group 2.....	60
Ethnic group 3.....	61
First contact care.....	62
Gender.....	63
Health care user id.....	64
Health promotion.....	65
Huhc expiry date.....	66
Huhc number.....	67
Huhc submitted.....	68

Meshblock.....	69
Message id.....	70
Organisation Id.....	71
Organisation name.....	72
PHO patient id.....	73
Patient address 1.....	74
Patient address 2.....	75
Patient age category.....	76
Patient city.....	77
Patient ethnic category.....	78
Patient family name.....	79
Patient first given name.....	80
Patient second given name.....	81
Patient suburb.....	82
Patient third given name.....	83
Pid status.....	84
Practice id.....	85
Practice name.....	86
Services to improve access.....	87
X coordinate.....	88
Y coordinate.....	89
Year quarter.....	90
Zero Fees for Under Sixes.....	91
vlca payment.....	92
PHO Enrolment Flags table.....	93
Careplus enrolment status.....	94
Enrolment status.....	95
Practice type.....	96
PHO PHO table.....	97
DHB.....	98
DHB Code.....	99
Establishment date.....	100
Funding formula.....	101
PHO.....	102
dim pho key.....	103
pho id.....	104
PHO Practice table.....	105
PHO id.....	106
PHO name.....	107
Practice id.....	108
Practice name.....	109
Prev PHO Practice table.....	110
PHO id.....	111
PHO name.....	112
Practice id.....	113
Practice name.....	114
Prev PHO practice_key.....	115
Appendix A: Logical to Physical Table Mapping.....	116
Appendix B: List of Shared Dimensions.....	117
Appendix C: List of Views.....	118
Appendix D: Index of Element Names.....	119
Appendix E: Data Dictionary Template.....	120
Appendix F: Glossary.....	124
Appendix G: List of Dimensions.....	126
Appendix H: Alphabetical Index of Data Elements.....	128
Appendix I: PHO Enrolment Data Model.....	130

Primary Health Organisation Enrolment

Purpose	<p>The purpose of the collection is to provide a national collection that holds PHCS patient enrolment data for the following uses:</p> <ul style="list-style-type: none"> To assist PHOs, DHBs and the MoH to report and monitor patient enrolment under the PHCS. To provide PHOs, DHBs, MoH and health researchers with population data to assist with population health research. To assist PHOs to examine and improve the quality of their enrolment information.
Content	<p>The PHO Enrolment is a national collection of publicly funded primary health information for patients enrolled with a PHO. Unit record data is collected and stored.</p>
Start date	<p>PHO was established in 2005.</p>
Guide for use	<p>The dimensions in the datamart are codes and descriptions, based on reference data. It may be unique to the datamart or it may be common across several systems. Dimension data includes items such as Provider IDs, Health Care User IDs, Ethnic Groups, etc. The facts in the datamart are "events" and "enrolments", based on the PHO registers and FFSvc data captured by MOH within the General Transaction Processing System (GTPS). Extract files are sent to MOH where they are loaded into the datamart tables to facilitate reports and queries.</p>
Contact information	<p>For further information about this collection or to request specific datasets or reports, contact the Analytical Services team on ph 04 922 1800, fax 04 922 1899, or e-mail data-enquiries@moh.govt.nz, or visit the MOH web site www.moh.govt.nz.</p>
Collection methods	<p>The PHO Enrolment Collection holds and provides access to two key elements of PHCS information:</p> <ul style="list-style-type: none"> Copies of all "Enriched PHO Enrolment Registers" as sent from MOH to PHOs. Any register adjustments are also applied to the collection. Copies of all "Fee for Service Wash-up" information as sent from MOH to PHOs. FFS wash-up cost adjustments are also applied to the collection.
Frequency of updates	<p>PHO DM receives monthly extracts from MOH</p>
Security of data	<p>The PHO Enrolment Collection provides access to different health sector organisations as follows:</p> <ul style="list-style-type: none"> PHOs can access their own enrolled patient information and the FFS wash-up costs for these patients. DHBs, the MOH and authorised researchers can access non-identifiable enrolled patient information and non-identifiable FFS wash-up costs. Specially authorised Ministry of Health data analysts can access all information held in the collection.
Privacy issues	<p>The PHO Enrolment Collection has been designed to protect patient information as required by the Health Act 1956, the Privacy Act 1993 and the Health Information Privacy Code 1994. This ensures that access to identifiable patient information is limited to the PHO where the patient is enrolled and selected MOH personal specifically authorised.</p>
National reports and publications	<p>MOH releases monthly standard reports for DHBs via the HIN.</p>

Data provision

Customised datasets or summary reports are available on request, either electronically or on paper. Staff from the MOH Analytical Services team can help to define the specifications for a request and are familiar with the strengths and weaknesses of the data.

The MOH Analytical Services team also offers a peer review service to ensure that MOH data is reported appropriately when published by other organisations.

There may be charges associated with data extracts

Census Fact table

Table name fact_census

Definition Demographic information on the population of NZ broken out by age, sex, ethnicity and domicile code.
Source: NZ Statistics.

Primary key

Business key domicile_code, age, gender, census_ethnicity_01, year

Guide for use Relational Rules
The Fact table has several foreign keys to dimension tables. These are:

Key	LINKED TO
dim_age_band_key	dim_age_band table
dim_census_affiliation_key	dim_census_affiliation table
dim_census_geofile_key	dim_census_geofile table

Relational rules

Data content

Age

Definition The age in years of this group.

Column name age

Table name fact_census

Data type integer

Other names

Context

Layout

Data domain 0 to 105

Guide for use

Verification rules

Collection methods

Related data

Source document

Source organisation

Census ethnicity 1996

Definition	An ethnicity code used during the 1996 census.
Column name	census_ethnicity_96
Table name	fact_census
Data type	char(2)
Other names	
Context	The 1996 census ethnicity that this ethnic code maps to.
Layout	AA
Data domain	M NZ Maori P Pacific Island O Other
Guide for use	
Verification rules	
Collection methods	
Related data	
Source document	
Source organisation	

Census ethnicity 2001

Definition	An ethnicity code used during the 2001 census.
Column name	census_ethnicity_01
Table name	fact_census
Data type	char(2)
Other names	
Context	The 1996 census ethnicity that this ethnic code maps to.
Layout	AA
Data domain	M Maori E European A Asian P Pacific O Other N Not Stated
Guide for use	
Verification rules	
Collection methods	
Related data	
Source document	
Source organisation	

DSS Count

Definition

Column name dss_count

Table name fact_census

Data type number(1)

Other names**Context****Layout****Data domain****Guide for use****Verification rules****Collection methods****Related data****Source document****Source organisation**

Domicile Code

Definition Domicile code

Column name domicile_code

Table name fact_census

Data type char(4)

Other names

Context

Layout NNNN

Data domain See the Domicile code table on the NZHIS web site at <http://www.nzhis.govt.nz/documentation/codetables/index.html>. For further information or a printed copy of the code table, contact the Publications Officer. Contact details are given at the front of thi

Guide for use

Verification rules

Collection methods

Related data

Source document

Source organisation

Population

Definition	The counted population of this breakdown from the 2001 census.
Column name	population
Table name	fact_census
Data type	number(16,9)
Other names	
Context	
Layout	NNNNNNN.NNNNNNNNN
Data domain	0.000000000 to 9999999.999999999
Guide for use	
Verification rules	
Collection methods	
Related data	
Source document	
Source organisation	

Sex

Definition The individual's biological sex.

Column name gender

Table name fact_census

Data type char(1)

Other names

Context

Layout A

Data domain M Male
F Female

Guide for use

Verification rules

Collection methods

Related data

Source document

Source organisation

Year

Definition	The year for which this population is valid.
Column name	year
Table name	fact_census
Data type	integer
Other names	
Context	
Layout	CCYY
Data domain	2001
Guide for use	
Verification rules	
Collection methods	
Related data	
Source document	
Source organisation	

FFS Washup Fact table

Table name fact_ffs_washup

Definition The Fee for Service (FFS) Washup table contains a record for each FFS GMS visit where the patient sought care outside his or her nominated PHO Practice.

Primary key

Business key

Guide for use

Relational Rules

The Fact table has several foreign keys to dimension tables. These are:

Key	LINKED TO
dim_claim_code_key	dim_claim_code table
dim_dhb_reference_key	dim_dhb_reference table
dim_health_care_user_key	dim_health_care_user table
dim_payee_key	dim_payee table
dim_payment_date_key	dim_global_time
dim_pho_key	dim_pho table
dim_provider_key	dim_provider table
dim_visit_date_key	dim_global_time

Relational rules

Data content

Actual ffs deduction amount

Definition

Column name actual_ffs_deduction_amount

Table name fact_ffs_washup

Data type number(13,4)

Other names

Context

Layout NNNNNNNNNNNNN.NN

Data domain

Guide for use Values should be equivalent to GMS claim values. However, reversals and adjustments will need to be reflected within any reconciliation exercise between the two collections.

Reversals will be reflected as negative values where they occur in a different month from the original GMS claim.

Column description:

Actual fee for service (ffs) deduction amount is the dollar value of the GMS claim that is deducted from the PHO's capitation payment due to the fact that a GMS claim has been filed for services rendered to a PHO's enrollee.

This amount reflects the 'stop loss' feature where the FFS deductions do not occur on the 4th or greater claim for an individual of any given month.

Verification rules

Collection methods

Related data

Source document

Source organisation

Amount payable

Definition deduction amount is the dollar value of the GMS claim that is deducted from the PHO's capitation payment due to the fact that a GMS claim has been filed for services rendered to a PHO's enrollee.

Column name amount_payable

Table name fact_ffs_washup

Data type number(13,4)

Other names

Context

Layout

Data domain

Guide for use This is different from the ACTUAL FFS deduction amount as there is a stop loss. If a single individual has more than 3 deductions in a given month then the GMS claim value for the 4th and subsequent occurrences is not deducted.

This amount is GST inclusive.

Verification rules

Collection methods

Related data

Source document

Source organisation

CBF nhi number

Definition	The NHI number provided by the PHO within a reporting period for a specific patient as validated by HealthPAC.
Column name	cbf_nhi_number
Table name	fact_ffs_washup
Data type	char(7)
Other names	
Context	
Layout	AAANNNN
Data domain	
Guide for use	
Verification rules	Checked to confirm that value is consistent with the business rules.
Collection methods	
Related data	
Source document	
Source organisation	

DSS count

Definition

Column name dss_count

Table name fact_ffs_washup

Data type number(1)

Other names**Context****Layout****Data domain****Guide for use****Verification rules****Collection methods****Related data****Source document****Source organisation**

Encrypted cbf nhi

Definition	The enhanced cbf nhi number as validated by HealthPAC, in its encrypted version.
Column name	encrypted_cbf_nhi
Table name	fact_ffs_washup
Data type	char(11)
Other names	
Context	The NHI is encrypted in datamarts to ensure the privacy of individual records.
Layout	NNNNNNNNNNNN
Data domain	
Guide for use	The NHI number is encrypted using a one-way encryption algorithm. The aim is to provide an encrypted number that can be sent across public (unsecured) networks.
Verification rules	Must be registered on the NHI before use. There is a verification algorithm which ensures that the NHI number is in the correct format and is valid.
Collection methods	
Related data	
Source document	
Source organisation	

Fee amount

Definition	Fee amount as supplied in the FFS Washup extract.
Column name	fee_amount
Table name	fact_ffs_washup
Data type	number(13,4)
Other names	
Context	
Layout	
Data domain	
Guide for use	
Verification rules	
Collection methods	
Related data	
Source document	
Source organisation	

Internal patient id

Definition PHO assigned patient identifier.

Column name internal_patient_id

Table name fact_ffs_washup

Data type varchar2(20)

Other names

Context

Layout

Data domain

Guide for use The PHO patient id can change over time. Is not validated against the NHI and can occur in differing formats within the same PHO on occasion.

Verification rules

Collection methods

Related data

Source document

Source organisation

Match id

Definition	Code which indicates the veracity of matching the GMS claims against PHO registers.
Column name	match_id
Table name	fact_ffs_washup
Data type	varchar2(6)
Other names	
Context	
Layout	
Data domain	
Guide for use	The only values are "1", "2", or "1,2". Where both occur, this indicates that both matches succeeded.
Verification rules	
Collection methods	
Related data	
Source document	
Source organisation	

NHI number

Definition	A unique 7-character identification number assigned to a healthcare user by the National Health Index (NHI) database.
Column name	nhi_number
Table name	fact_ffs_washup
Data type	char(7)
Other names	
Context	NHI numbers uniquely identify healthcare users, and allow linking between different data collections.
Layout	AAANNNN
Data domain	
Guide for use	The first three characters of an NHI number must be alpha (but not 'I' or 'O'). The 4th to 6th characters must be numeric. The 7th character is a check digit modulus 11.
Verification rules	There is a verification algorithm which ensures that the NHI number is in the correct format and is valid.
Collection methods	
Related data	
Source document	
Source organisation	

payee number

Definition

Column name	payee_number
Table name	fact_ffs_washup
Data type	varchar2(10)

Other names

Context

Layout

Data domain

Guide for use

Verification rules

Collection methods

Related data

Source document

Source organisation

PHO Enrolment Fact table

Table name fact_pho_enrolment

Definition The PHO Enrolment table contains a record for each patient enrollment or registration within a reporting period, i.e., quarterly.

Primary key

Business key

Guide for use

Relational Rules

The Fact table has several foreign keys to dimension tables. These are:

Key	LINKED TO
dim_affiliation_key	dim_affiliation table
dim_age_band_key	dim_age_band table
dim_consultation_date_key	dim_consultation_date table
dim_dhb_reference_key	dim_dhb_reference table
dim_enrolment_date_key	dim_global_time table
dim_geofile_key	dim_geofile table
dim_health_care_user_key	dim_health_care_user table
dim_pho_enrolment_flags_key	dim_pho_enrolment_flags table
dim_pho_practice_key	dim_pho_practice table
dim_prev_pho_practice_key	dim_prev_pho_practice table
dim_provider_key	dim_provider table
dim_quarter_key	dim_quarter table
dim_visit_date_key	dim_global_time table

Relational rules

Data content

Address uncertainty

Definition	Code from 1 to 10 that indicates level of certainty related to the geocoding of that particular address.
Column name	address_uncertainty
Table name	fact_pho_enrolment
Data type	integer
Other names	
Context	From a payment perspective, any address with a certainty code of 4 or less is considered valid for payment purposes. Any code 5 or greater, the address will hold a '0' value for the quintile.
Layout	
Data domain	
Guide for use	From a payment perspective, any address with a certainty code of 4 or less is considered valid for payment purposes. Any code 5 or greater, the address will hold a '0' value for the quintile.
Verification rules	
Collection methods	
Related data	
Source document	
Source organisation	

CSC expiry date

Definition	Community Services Card (CSC) expiry date is the date upon which a particular person's eligibility for CSC expires.
Column name	csc_expiry_date
Table name	fact_pho_enrolment
Data type	date
Other names	
Context	Community Services Cards enable individuals to receive government subsidised GP visits and Pharmaceutical services.
Layout	CCYYMMDD
Data domain	
Guide for use	There will be instances where a CBF claim will be processed for an expired CSC within a quarter. This is a timing issue between expiry and processing of claims.
Verification rules	All individual records with a CSC number and expiry date are checked against CSC reference data.
Collection methods	
Related data	
Source document	
Source organisation	

CSC number

Definition	The CSC number is an eligibility number. The first 13 digits relate to the individual, the remaining series is date sensitive.
Column name	csc_number
Table name	fact_pho_enrolment
Data type	integer
Other names	
Context	Community Services Cards enable individuals to receive government subsidised GP visits and Pharmaceutical services.
Layout	
Data domain	
Guide for use	A person should never have a CSC valid value of 'Y' without an enriched CSC number and Expiry Date being recorded.
Verification rules	<p>All individual records with CSC number and expiry date will be checked against CSC reference data.</p> <p>Where CSC number is not found, the individual name and date of birth will be checked against CSC reference data (caregiver and dependent).</p>
Collection methods	
Related data	
Source document	
Source organisation	

CSC submitted

Definition This is the CSC submitted flag.

Column name csc_submitted

Table name fact_pho_enrolment

Data type char(1)

Other names

Context

Layout A

Data domain Y = Yes
N = No

Guide for use

Verification rules

Collection methods

Related data

Source document

Source organisation

Careplus end date

Definition	This is the expiry date of Care Plus eligibility for that particular person as submitted by the Provider.
Column name	careplus_end_date
Table name	fact_pho_enrolment
Data type	date
Other names	
Context	Care Plus is a programme of enhanced services and funding for individuals with complex and intensive medical conditions.
Layout	CCYYMMDD
Data domain	
Guide for use	
Verification rules	
Collection methods	
Related data	
Source document	
Source organisation	

Careplus enrolment status

Definition	Careplus enrolment status is a Y/N indicator of whether the patient is a careplus enrollee or not.
Column name	careplus_enrolment_status
Table name	fact_pho_enrolment
Data type	char(1)
Other names	
Context	
Layout	A
Data domain	Y = Yes N = No
Guide for use	
Verification rules	
Collection methods	
Related data	
Source document	
Source organisation	

Careplus start date

Definition	The date upon which a particular person becomes eligible for Care Plus.
Column name	careplus_start_date
Table name	fact_pho_enrolment
Data type	date
Other names	
Context	Care Plus is a programme of enhanced services and funding for individuals with complex and intensive medical conditions.
Layout	CCYYMMDD
Data domain	
Guide for use	
Verification rules	
Collection methods	
Related data	
Source document	
Source organisation	

DHB name

Definition Legal name of the District Health Board.

Column name dhb

Table name fact_pho_enrolment

Data type varchar2(30)

Other names

Context

Layout Free text

Data domain

Guide for use

Verification rules

Collection methods

Related data

Source document

Source organisation

DSS count

Definition	Row count column.
Column name	dss_count
Table name	fact_pho_enrolment
Data type	integer
Other names	
Context	
Layout	
Data domain	
Guide for use	DSS is Decision Support System.
Verification rules	WhereScape Red field.
Collection methods	
Related data	
Source document	
Source organisation	

Date of birth

Definition	The date when a person was born.
Column name	date_of_birth
Table name	fact_pho_enrolment
Data type	date
Other names	Birth date, DOB
Context	
Layout	DDMMCCYY
Data domain	Valid dates
Guide for use	
Verification rules	Must be on or before the Date of death, and before the Date of load.
Collection methods	Sourced from the police report or other information available to the coroner.
Related data	Age at death - days Age at death - months Age at death - years
Source document	
Source organisation	

Deprivation quintile

Definition	The deprivation quintile is the score representing the level of socio-economic deprivation of the area where the person resides.
Column name	deprivation_quintile
Table name	fact_pho_enrolment
Data type	integer
Other names	
Context	
Layout	
Data domain	
Guide for use	<p>Deprivation quintile values should be 0 to 5, where 0 represents a street address that could not be geocoded, 1 represents the least deprived quintile and 5 represents the most deprived quintile.</p> <p>A quintile 1 is equal to decile 1 and 2 A quintile 5 is equal to decile 9 and 10</p> <p>The deprivation index is calculated by the Wellington School of Medicine and the Ministry using NZ Statistics' supplied Census data every five (5) years.</p>
Verification rules	
Collection methods	
Related data	
Source document	
Source organisation	

En careplus end date

Definition	This is the enriched (en) expiry date of Care Plus eligibility for that particular person as processed by HealthPAC.
Column name	en_careplus_end_date
Table name	fact_pho_enrolment
Data type	date
Other names	
Context	
Layout	CCYYMMDD
Data domain	
Guide for use	
Verification rules	Checked to confirm that value is consistent with the business rules.
Collection methods	
Related data	
Source document	
Source organisation	

En careplus enrolment status

Definition	The Enriched (en) Care Plus enrolment status relates to whether the individual's PHO is funded or not for Care Plus as processed by HealthPAC.
Column name	en_careplus_enrolment_status
Table name	fact_pho_enrolment
Data type	char(1)
Other names	
Context	
Layout	A
Data domain	Y = Yes N = No
Guide for use	Funded equals 'Y'.
Verification rules	Checked by HealthPAC to confirm that the value is consistent with the business rules.
Collection methods	
Related data	
Source document	
Source organisation	

En careplus start date

Definition	Enriched (en) Careplus start date is the date upon which a particular person becomes eligible for Care Plus as processed by HealthPAC.
Column name	en_careplus_start_date
Table name	fact_pho_enrolment
Data type	date
Other names	
Context	Care Plus is a programme of enhanced services and funding for individuals with complex and intensive medical conditions.
Layout	CCYYMMDD
Data domain	
Guide for use	
Verification rules	Checked by HealthPAC to confirm that value is consistent with the business rules.
Collection methods	
Related data	
Source document	
Source organisation	

En csc expiry date

Definition	Enriched (en) Community Services Card (CSC) expiry date is the date upon which a particular person's eligibility for CSC expires as processed by HealthPAC
Column name	en_csc_expiry_date
Table name	fact_pho_enrolment
Data type	date
Other names	
Context	Community Services Cards enable individuals to receive government subsidised GP visits and Pharmaceutical services.
Layout	CCYYMMDD
Data domain	
Guide for use	<p>There will be instances where a CBF claim will be processed fro an expired CSC within a quarter. This is a timing issue between expiry and processing of claims.</p> <p>Verification rules:</p> <p>Checked by HealthPAC to confirm that value is consistent with the business rules.</p> <p>All individual records with a CSC number and expiry date are checked against CSC reference data. Any card found for an individual that is valid and has an expiry date not more than four months prior to register submission will be assigned a CSC status.Checked by HealthPAC to confirm that value is consistent with the business rules.</p> <p>All individual records with a CSC number and expiry date are checked against CSC reference data. Any card found for an individual that is valid and has an expiry date not more than four months prior to register submission will be assigned a CSC status.Checked by HealthPAC to confirm that value is consistent with the business rules.</p> <p>All individual records with a CSC number and expiry date are checked against CSC reference data. Any card found for an individual that is valid and has an expiry date not more than four months prior to register submission will be assigned a CSC status.</p>
Verification rules	
Collection methods	
Related data	
Source document	
Source organisation	

En csc number

Definition	Enriched (en) CSC number is the eligibility number as processed by HealthPAC. The first 13 digits relate to the individual, the remaining series is date sensitive.
Column name	en_csc_number
Table name	fact_pho_enrolment
Data type	integer
Other names	
Context	Community Services Cards enable individuals to receive government subsidised GP visits and Pharmaceutical services.
Layout	
Data domain	
Guide for use	A person should never have a CSC valid value of 'Y' without an enriched CSC number and Expiry Date being recorded.
Verification rules	Checked by HealthPAC to confirm that value is consistent with the business rules.
Collection methods	
Related data	
Source document	
Source organisation	

En csc valid

Definition	A flag to indicate if the PHO Community Services Card details were found to be valid.
Column name	en_csc_valid
Table name	fact_pho_enrolment
Data type	char(1)
Other names	
Context	
Layout	A
Data domain	Y or N
Guide for use	HealthPAC derived value. Valid value of 'Y'.
Verification rules	
Collection methods	
Related data	
Source document	
Source organisation	

En deprivation quintile

Definition	Enriched (en) deprivation quintile is the score representing the level of socio-economic deprivation of the area where the person resides as processed by HealthPAC.
Column name	en_deprivation_quintile
Table name	fact_pho_enrolment
Data type	integer
Other names	
Context	
Layout	
Data domain	
Guide for use	Deprivation quintile values should be 0 to 5, where 0 represents a street address that could not be geocoded, 1 represents the least deprived quintile and 5 represents the most deprived quintile.
Verification rules	Checked by HealthPAC to confirm that value is consistent with the business rules.
Collection methods	
Related data	
Source document	
Source organisation	

En_dhb

Definition	Enriched (en) DHB name is the legal name of the District Health Board as processed by HealthPAC.
Column name	en_dhb
Table name	fact_pho_enrolment
Data type	varchar2(30)
Other names	
Context	
Layout	Free text
Data domain	
Guide for use	This is derived from the enrollee's address as provided within the extract. An enrollee may choose to register with a PHO outside of his/her DHB area.
Verification rules	Checked during HealthPAC processing to confirm that value is consistent with the business rules.
Collection methods	
Related data	
Source document	
Source organisation	

En health care user id

Definition	Enriched (en) health care user id is the NHI number provided by the PHO within a reporting period for a specific patient as validated by HealthPAC.
Column name	en_health_care_user_id
Table name	fact_pho_enrolment
Data type	char(7)
Other names	
Context	
Layout	AAAAAAA
Data domain	
Guide for use	
Verification rules	Checked during HealthPAC processing to confirm that value is consistent with the business rules.
Collection methods	
Related data	
Source document	
Source organisation	

En huhc expiry date

Definition	Enriched (en) High User Health Card (HUHC) expiry date is the date upon which a particular person's eligibility for HUHC expires as processed by HealthPAC.
Column name	en_huhc_expiry_date
Table name	fact_pho_enrolment
Data type	date
Other names	
Context	The HUHC is granted to individuals based on their having 12 or more GP consultations within a previous 12 month period. A GP must complete an application form on behalf of their patient.
Layout	CCYYMMDD
Data domain	
Guide for use	<p>There will be instances where a CBF claim will be processed for an expired HUHC within a quarter. This is a timing issue between expiry and processing of claims.</p> <p>Verification rules:</p> <p>Checked during HealthPAC processing to confirm that value is consistent with the business rules.</p> <p>Where the HUHC number associated with NHI number is found, its expiry date is not more than one month prior to date of register submission and the card is not declined or cancelled, then the individual record is marked as a HUHC holder and an enriched (en) record is generated.</p> <p>Where an HUHC number is found with a matching DOB and gender, its expiry date is not more than one month prior to date of register submission and the card is not declined or cancelled, then the individual record is marked as a HUHC holder and an enriched (en) record is generated.</p>
Verification rules	
Collection methods	
Related data	
Source document	
Source organisation	

En huhc number

Definition	Enriched (en) High Use Health Card (Huhc) number as processed by HealthPAC.
Column name	en_huhc_number
Table name	fact_pho_enrolment
Data type	integer
Other names	
Context	The High Use Health Card (Huhc) is granted to individuals based on their having 12 or more GP consultations within a previous 12 month period. A GP must complete an application form on behalf of their patient.
Layout	
Data domain	
Guide for use	
Verification rules	Checked during HealthPAC processing to confirm that value is consistent with the business rules.
Collection methods	
Related data	
Source document	
Source organisation	

En huhc valid

Definition	A flag to indicate if the PHO HUHC details were found to be valid.
Column name	en_huhc_valid
Table name	fact_pho_enrolment
Data type	char(1)
Other names	
Context	
Layout	A
Data domain	Y or N
Guide for use	HealthPAC derived value. Valid value of 'Y'.
Verification rules	
Collection methods	
Related data	
Source document	
Source organisation	

En meshblock

Definition	The enriched (en) meshblock is the smallest geographic area used by Statistics New Zealand in the collection and/or processing of data as validated by HealthPAC.
Column name	en_meshblock
Table name	fact_pho_enrolment
Data type	varchar2(7)
Other names	
Context	
Layout	NNNNNNN
Data domain	
Guide for use	In the context of the PHO, meshblock relates to the person.
Verification rules	
Collection methods	
Related data	
Source document	
Source organisation	

En nhi matching type

Definition	Enriched (en) NHI matching type indicates the method in which the reported NHI was validated against the NHI Register during HealthPAC processing.
Column name	en_nhi_matching_type
Table name	fact_pho_enrolment
Data type	char(1)
Other names	
Context	
Layout	A
Data domain	D, V, M
Guide for use	Values contained are: D = direct match - all details for the NHI reported are equal to those recorded within the NHI Register. V = the reported NHI number and the Date of Birth match those recorded upon the NHI Register. M = a manual match. Search was manually carried out to verify details.
Verification rules	
Collection methods	
Related data	
Source document	
Source organisation	

En patient death date

Definition The date of the patients death

Column name en_patient_death_date

Table name fact_pho_enrolment

Data type date

Other names

Context

Layout CCYYMMDD

Data domain

Guide for use

Verification rules

Collection methods

Related data

Source document

Source organisation

En x coordinate

Definition	The enriched (en) X coordinate is the longitude value used in conjunction with the Y coordinate to model a patient's address's true spherical position on the earth's surface as validated by HealthPAC processing.
Column name	en_x_coordinate
Table name	fact_pho_enrolment
Data type	integer
Other names	
Context	
Layout	
Data domain	
Guide for use	In the format -dd.mm, for example -40.00?
Verification rules	Checked during HealthPAC processing to confirm that value is consistent with the business rules.
Collection methods	
Related data	
Source document	
Source organisation	

En y coordinate

Definition	The enriched (en) Y coordinate is the latitude value used in conjunction with the X coordinate to model a patient's address's true spherical position on the earth's surface as validated by HealthPAC processing.
Column name	en_y_coordinate
Table name	fact_pho_enrolment
Data type	integer
Other names	
Context	
Layout	
Data domain	
Guide for use	In the format ddd.mm, for example `175.00?.
Verification rules	Checked during HealthPAC processing to confirm that value is consistent with the business rules.
Collection methods	
Related data	
Source document	
Source organisation	

Encrypted NHI number

Definition	The NHI number in encrypted form.
Column name	encrypted_hcu_id
Table name	fact_pho_enrolment
Data type	varchar2(11)
Other names	Encrypted HCU identifier, Encrypted NHI, etc. See other names for the NHI number under Guide for use.
Context	The NHI number is the cornerstone of NZHIS's data collections. It is a unique 7-character identification number assigned to a healthcare user by the National Health Index (NHI) database. The NHI number uniquely identifies healthcare users, and allows link
Layout	AAAAAAAAAAAA
Data domain	System-generated
Guide for use	<p>THE NHI NUMBER</p> <p>The NHI number is also known as National Health Index, HCU identifier, NHI, HCU, HCU Number, Healthcare User identifier, HCU identification number, NMPI number, Hospital Number, Patient Number.</p> <p>When duplicate records for a healthcare user are merged, one of their NHI numbers will be deemed to be the master (or primary), and the others become event (or secondary) NHI numbers. This does not affect which NHI numbers are used in local systems.</p> <p>The NHI number that is sent in by the data provider is encrypted during the loading process. Only this encrypted NHI number is stored.</p> <p>For the analysis of healthcare information relating to a unique individual, the master NHI number should be used. Please contact inquiries@nzhis.co.nz for further information on how to obtain the master encrypted NHI number if you are performing your own data extraction.</p> <p>The Privacy Commissioner considers the NHI number to be personally identifying information (like name and address) so, if it is linked to clinical information, it must be held securely and the healthcare user's privacy protected. The Encrypted NHI number is not considered personally identifying.</p> <p>NZHIS will return data containing unencrypted NHI numbers to providers who have sent it in. Information available to the general public is of a statistical and non-identifiable nature. Researchers requiring identifiable data will usually need approval from an Ethics Committee.</p> <p>VALIDATION</p> <p>The first three characters of an NHI number must be alpha (but not 'I' or 'O'). The 4th to 6th characters must be numeric. The 7th character is a check digit modulus 11.</p> <p>ENCRYPTION</p> <p>The NHI number is encrypted using a one-way encryption algorithm. The aim is to provide an encrypted number that can be sent across public (unsecured) networks.</p>
Verification rules	<p>Must be registered on the NHI before use.</p> <p>There is a verification algorithm which ensures that the NHI number is in the correct format and is valid.</p>

Collection methods NHI numbers are often included on patient notes and other patient documentation. New numbers can be allocated by health providers who have direct access to the NHI Register.

Related data

Source document <http://www.nzhis.govt.nz/nhi/> for more information on the NHI number

Source organisation NZHIS

Encrypted hcu status

Definition

Column name encrypted_hcu_status

Table name fact_pho_enrolment

Data type char(1)

Other names

Context

Layout A

Data domain
E = Encrypted
F = Failed
B = Blank

Guide for use

The 'Encrypted hcu status' allows for detailed analysis of the data quality of NHI information. It distinguishes between an invalid NHI number and one that is blank.

Column description:

This is a flag to indicate whether the NHI number was encrypted or not.

E indicates that the NHI number sent in the PHO extract was valid and the Encrypted HCU ID contains a valid encrypted NHI number.

F indicates that the NHI number sent in the PHO extract was invalid and the Encrypted HCU ID has been set to '0000000000'.

B indicates that no NHI number was sent in the PHO extract and the Encrypted HCU ID has been set to '0000000000'

Verification rules

Collection methods

Related data

Source document

Source organisation

Ethnic group 1

Definition	Patient's self-identified primary ethnicity code. Patient may have up to three ethnic codes.
Column name	ethnic_group_1
Table name	fact_pho_enrolment
Data type	char(2)
Other names	
Context	
Layout	NN
Data domain	
Guide for use	Individual ethnicity is derived from the ethnicity fields in the individual register. If any of these fields is Maori or Pacific Island (codes 21, 30-37), the person is coded `Maori/Pacific Island?. Otherwise, the record is coded as `non Maori Pacific Island, and this applies to invalid values as well?. Note: invalid values are accepted within the HealthPAC CBF processing.

Context:

The follow list outlines ethnicity codes accepted by CBF:

Group Code	Description
10	European not further defined
11	NZ European / Pakeha
12	Other European
21	NZ Maori
30	Pacific Island not further defined
31	Samoan
32	Cook Island Maori
33	Tongan
34	Niuean
35	Tokelauan
36	Fijian
37	Other Pacific Island
40	Asian not further defined
41	South East Asian
42	Chinese
43	Indian
44	Other Asian
51	Middle Eastern
52	Latin American / Hispanic
53	African
54	Other
98	Declined to State
99	Not Stated

Verification rules

Collection methods

Related data

Source document

Source organisation

Ethnic group 2

Definition Patient's self-identified secondary ethnicity code. Patient may have up to three ethnic codes.

Column name ethnic_group_2

Table name fact_pho_enrolment

Data type char(2)

Other names

Context Please refer to Context section under Guide for use for Ethnic group 1.

Layout NN

Data domain

Guide for use Individual ethnicity is derived from the ethnicity fields in the individual register. If any of these fields is Maori or Pacific Island (codes 21, 30-37), the person is coded `Maori/Pacific Island?. Otherwise, the record is coded as `non Maori Pacific Island, and this applies to invalid values as well?. Note: invalid values are accepted within the HealthPAC CBF processing.

Verification rules

Collection methods

Related data

Source document

Source organisation

Ethnic group 3

Definition	Patient's self-identified tertiary ethnicity code. Patient may have up to three ethnic codes.
Column name	ethnic_group_3
Table name	fact_pho_enrolment
Data type	char(2)
Other names	
Context	Please refer to Context section under Guide for use for Ethnic group 1.
Layout	NN
Data domain	
Guide for use	Individual ethnicity is derived from the ethnicity fields in the individual register. If any of these fields is Maori or Pacific Island (codes 21, 30-37), the person is coded `Maori/Pacific Island?. Otherwise, the record is coded as `non Maori Pacific Island, and this applies to invalid values as well?. Note: invalid values are accepted within the HealthPAC CBF processing.
Verification rules	
Collection methods	
Related data	
Source document	
Source organisation	

First contact care

Definition	First contact care is the quarterly dollar value per capita, associated with general practice care and is GST exclusive.
Column name	first_contact_care
Table name	fact_pho_enrolment
Data type	number(13,4)
Other names	
Context	
Layout	NNNNNNNNNNNN.NNNN
Data domain	
Guide for use	
Verification rules	As from 16-12-05, if field value is NULL then replace with '0'.
Collection methods	
Related data	
Source document	
Source organisation	

Gender

Definition The individual's gender is either male, female or unknown.

Column name gender

Table name fact_pho_enrolment

Data type char(1)

Other names

Context

Layout A

Data domain M = Male
F = Female
U = Unknown
I = Indeterminate

Guide for use

Verification rules

Collection methods

Related data

Source document

Source organisation

Health care user id

Definition	The NHI number provided by the PHO within a reporting period for a specific patient.
Column name	health_care_user_id
Table name	fact_pho_enrolment
Data type	char(7)
Other names	
Context	
Layout	AAAAAAA
Data domain	
Guide for use	
Verification rules	
Collection methods	
Related data	
Source document	
Source organisation	

Health promotion

Definition	Health promotion is the quarterly per capita dollar value for population based health promotion services and is GST exclusive.
Column name	health_promotion
Table name	fact_pho_enrolment
Data type	number(13,4)
Other names	
Context	
Layout	NNNNNNNNNNNN.NNNN
Data domain	
Guide for use	
Verification rules	As from 16-12-05, if field value is NULL then replace with '0'.
Collection methods	
Related data	
Source document	
Source organisation	

Huhc expiry date

Definition High User Health Card (HUHC) expiry date is the date upon which a particular person's eligibility for HUHC expires.

Column name huhc_expiry_date

Table name fact_pho_enrolment

Data type date

Other names

Context The HUHC is granted to individuals based on their having 12 or more GP consultations within a previous 12 month period. A GP must complete an application form on behalf of their patient.

Layout CCYYMMDD

Data domain

Guide for use There will be instances where a CBF claim will be processed for an expired HUHC within a quarter. This is a timing issue between expiry and processing of claims.

Verification rules All individual records with NHI number, HUHC number, and expiry date will be checked against HUHC reference data and NHI database.

Collection methods

Related data

Source document

Source organisation

Huhc number

Definition The High Use Health Card (Huhc) number is assigned by HealthPAC.

Column name huhc_number

Table name fact_pho_enrolment

Data type integer

Other names

Context The High Use Health Card (Huhc) is granted to individuals based on their having 12 or more GP consultations within a previous 12 month period. A GP must complete an application form on behalf of their patient.

Layout

Data domain

Guide for use Verification rules:

All individual records with NHI number, HUHC number, and expiry date will be checked against HUHC reference data and NHI database.

Where the HUHC number associated with NHI number is found, its expiry date is not more than one month prior to date of register submission and the card is not declined or cancelled, then the individual record is marked as a HUHC holder and an enriched (en) record is generated.

Where an HUHC number is found with a matching DOB and gender, its expiry date is not more than one month prior to date of register submission and the card is not declined or cancelled, then the individual record is marked as a HUHC holder and an enriched (en) record is generated.

Verification rules

Collection methods

Related data

Source document

Source organisation

Huhc submitted

Definition This is the HUHC submitted flag.

Column name huhc_submitted

Table name fact_pho_enrolment

Data type char(1)

Other names

Context

Layout A

Data domain `Y? or `N?.

Guide for use

Verification rules

Collection methods

Related data

Source document

Source organisation

Meshblock

Definition	The meshblock is the smallest geographic area used by Statistics New Zealand in the collection and/or processing of data.
Column name	meshblock
Table name	fact_pho_enrolment
Data type	varchar2(7)
Other names	
Context	
Layout	NNNNNNN
Data domain	
Guide for use	<p>Context:</p> <p>The meshblock is the building block for aggregation into larger areas such as area units and urban areas. Meshblocks vary in both population and area size - from an extensive tract of sparsely populated rural land to a city block. Established in 1976, urban meshblocks contained an average of 150-200 persons while rural meshblocks generally had fewer (100-150 persons on average). Subsequent division of meshblocks and changes in population patterns have resulted in meshblock population counts having considerable range. There are meshblocks with nil population and some with over 500 population.</p> <p>From 1991 an annual meshblock pattern was instituted - The annual pattern is used for the full calendar year from 1 January and applies to the timing of the survey - not necessarily when the data is processed.</p> <p>While the meshblock pattern is continually under review, 'freezes' on changes to the pattern are applied periodically. Such 'freezes' are imposed at the time of population censuses and during periods of intense electoral activity (e.g. general and local body elections).</p>
Verification rules	
Collection methods	
Related data	
Source document	
Source organisation	

Message id

Definition	The Message Control identifier used by HealthPAC.
Column name	message_id
Table name	fact_pho_enrolment
Data type	varchar2(31)
Other names	
Context	
Layout	Free text
Data domain	
Guide for use	
Verification rules	
Collection methods	
Related data	
Source document	
Source organisation	

Organisation Id

Definition	The assigned Organisation Identifier (Perorg ID) from the Ministry of Health's Contract Management System (CMS).
Column name	organisation_id
Table name	fact_pho_enrolment
Data type	integer
Other names	
Context	This number links the Organisation and the legal entity that the DHB holds a contract with.
Layout	
Data domain	
Guide for use	The term Organisation is being used as the common term replacing and representing PHO and the earlier PCO. Note: That the presence of the term Organisation implies either / both PCO / PHO.
Verification rules	
Collection methods	
Related data	
Source document	
Source organisation	

Organisation name

Definition Organisation name relates to the PHO's PMS system assigned name.

Column name organisation_name

Table name fact_pho_enrolment

Data type varchar2(30)

Other names

Context

Layout Free text

Data domain

Guide for use Refer to Perorg Name, rather than use this name.

This field is marked 'internal use only' as Primary Care data quality results show better query results and completeness of data using the Perorg Name.

Verification rules

Collection methods

Related data

Source document

Source organisation

PHO patient id

Definition	The PHO patient ID refers to the ID assigned by the PHO.
Column name	pho_patient_id
Table name	fact_pho_enrolment
Data type	varchar2(20)
Other names	
Context	
Layout	Free text
Data domain	
Guide for use	The PHO patient ID can change over time. Is not validated against the NHI and can occur in differing formats within the same PHO on occasion.
Verification rules	
Collection methods	
Related data	
Source document	
Source organisation	

Patient address 1

Definition First line of the patient's address.

Column name patient_address_1

Table name fact_pho_enrolment

Data type varchar2(35)

Other names

Context

Layout Free text

Data domain

Guide for use

Verification rules

Collection methods

Related data

Source document

Source organisation

Patient address 2

Definition Second line of the patient's address.

Column name patient_address_2

Table name fact_pho_enrolment

Data type varchar2(30)

Other names

Context

Layout Free text

Data domain

Guide for use

Verification rules

Collection methods

Related data

Source document

Source organisation

Patient age category

Definition	Patient age category is a method used to categorise specific age groupings to allow capitation payment processing.
Column name	patient_age_category
Table name	fact_pho_enrolment
Data type	integer
Other names	
Context	
Layout	N
Data domain	1 2 3 4 5 6
Guide for use	Values are a number from 1 to 6, used within the payment process as the capitation payment rate tables are organised into 6 groups. Each group representing a differing age category. 1 equals 0 to 4 2 equals 5 - 14 3 equals 15 - 24 4 equals 25 - 44 5 equals 45 to 64, and 6 equals 65 and above
Verification rules	
Collection methods	
Related data	
Source document	
Source organisation	

Patient city

Definition	The city where the patient resides.
Column name	patient_city
Table name	fact_pho_enrolment
Data type	varchar2(30)
Other names	
Context	
Layout	Free text
Data domain	
Guide for use	
Verification rules	
Collection methods	
Related data	
Source document	
Source organisation	

Patient ethnic category

Definition	Patient ethnic category identifies an individual as 'Maori or Pacific Islander' or not.
Column name	patient_ethnic_category
Table name	fact_pho_enrolment
Data type	char(1)
Other names	
Context	
Layout	A
Data domain	Y or N
Guide for use	Y equals Yes, Maori or Pacific Islander.
Verification rules	
Collection methods	
Related data	
Source document	
Source organisation	

Patient family name

Definition Family name of the patient.

Column name patient_family_name

Table name fact_pho_enrolment

Data type varchar2(25)

Other names

Context

Layout Free text

Data domain

Guide for use

Verification rules

Collection methods

Related data

Source document

Source organisation

Patient first given name

Definition First name of the patient.

Column name patient_first_given_name

Table name fact_pho_enrolment

Data type varchar2(20)

Other names

Context

Layout Free text

Data domain

Guide for use

Verification rules

Collection methods

Related data

Source document

Source organisation

Patient second given name

Definition Second name of the patient.

Column name patient_second_given_name

Table name fact_pho_enrolment

Data type varchar2(20)

Other names

Context

Layout Free text

Data domain

Guide for use

Verification rules

Collection methods

Related data

Source document

Source organisation

Patient suburb

Definition The suburb where the patient resides.

Column name patient_suburb

Table name fact_pho_enrolment

Data type varchar2(30)

Other names

Context

Layout Free text

Data domain

Guide for use

Verification rules

Collection methods

Related data

Source document

Source organisation

Patient third given name

Definition Third name of the patient.

Column name patient_third_given_name

Table name fact_pho_enrolment

Data type varchar2(20)

Other names

Context

Layout Free text

Data domain

Guide for use

Verification rules

Collection methods

Related data

Source document

Source organisation

Pid status

Definition	PID status is a HealthPAC derived data field populated from CBM3_Status.
Column name	pid_status
Table name	fact_pho_enrolment
Data type	varchar2(20)
Other names	
Context	
Layout	
Data domain	OK
Guide for use	
Verification rules	
Collection methods	
Related data	
Source document	
Source organisation	

Practice id

Definition	Practice ID is a code which uniquely identifies a practice within a PHO.
Column name	practice_id
Table name	fact_pho_enrolment
Data type	varchar2(6)
Other names	
Context	
Layout	AAAAAA
Data domain	
Guide for use	
Verification rules	
Collection methods	
Related data	
Source document	
Source organisation	

Practice name

Definition	The name of a practice as assigned by the PHO.
Column name	practice_name
Table name	fact_pho_enrolment
Data type	varchar2(35)
Other names	
Context	
Layout	Free text
Data domain	
Guide for use	
Verification rules	
Collection methods	
Related data	
Source document	
Source organisation	

Services to improve access

Definition	Services to improve access is the quarterly per capita dollar amount associated with services to improve access to care for high need persons. GST exclusive.
Column name	services_to_improve_access
Table name	fact_pho_enrolment
Data type	number(13,4)
Other names	
Context	
Layout	NNNNNNNNNNNNNN.NNNN
Data domain	
Guide for use	
Verification rules	As from 16-12-05, if field value is NULL then replace with '0'.
Collection methods	
Related data	
Source document	
Source organisation	

X coordinate

Definition	The X coordinate is the longitude value used in conjunction with the Y coordinate to model a patient's address's true spherical position on the earths surface.
Column name	x_coordinate
Table name	fact_pho_enrolment
Data type	integer
Other names	
Context	
Layout	
Data domain	
Guide for use	In the format -dd.mm, for example `-40.00?.
Verification rules	
Collection methods	
Related data	
Source document	
Source organisation	

Y coordinate

Definition	The Y coordinate is the latitude value used in conjunction with the X coordinate to model a patient's address's true spherical position on the earth's surface.
Column name	y_coordinate
Table name	fact_pho_enrolment
Data type	integer
Other names	
Context	
Layout	
Data domain	
Guide for use	In the format ddd.mm, for example `175.00?.
Verification rules	
Collection methods	
Related data	
Source document	
Source organisation	

Year quarter

Definition	Year and quarter index, e.g., 2004 Q1; 2004 Q2
Column name	year_quarter
Table name	fact_pho_enrolment
Data type	char(8)
Other names	
Context	
Layout	YYYY Qn
Data domain	
Guide for use	
Verification rules	
Collection methods	
Related data	
Source document	
Source organisation	

Zero Fees for Under Sixes

Definition	Funding Level applicable for Zero Cost for Under 6s services (U6).
Column name	u6_payment
Table name	fact_pho_enrolment
Data type	number(13,4)
Other names	
Context	Practice level services.
Layout	
Data domain	
Guide for use	
Verification rules	
Collection methods	
Related data	
Source document	
Source organisation	

vlca payment

Definition	Funding Level applicable for VLCA (Very Low Cost Access).
Column name	vlca_payment
Table name	fact_pho_enrolment
Data type	number(13,4)
Other names	
Context	Practice level services.
Layout	
Data domain	
Guide for use	
Verification rules	
Collection methods	
Related data	
Source document	
Source organisation	

PHO Enrolment Flags table

Table name	dim_pho_enrolment_flags
Definition	The PHO enrolment flags dimension is a matrix of enrolment status flags for a patient enrolled within a PHO.
Primary key	dim_pho_enrolment_flags_key
Business key	enrolment_status, practice_type, careplus_enrolment_status
Guide for use	Each record contains 3 flags, this dimension hold every combination available of those flags. Each patient is linked to the record containing the appropriate combination of flags to describe their enrolment.
Relational rules	
Data content	

Careplus enrolment status

Definition	Careplus enrolment status is a Y/N indicator of whether the patient is a careplus enrollee or not.
Column name	careplus_enrolment_status
Table name	dim_pho_enrolment_flags
Data type	char(1)
Other names	
Context	
Layout	A
Data domain	Y = Yes N = No
Guide for use	
Verification rules	
Collection methods	
Related data	
Source document	
Source organisation	

Enrolment status

Definition	Enrolment status indicates whether the patient is enrolled or registered with the PHO.
Column name	enrolment_status
Table name	dim_pho_enrolment_flags
Data type	varchar2(20)
Other names	
Context	
Layout	
Data domain	ENROLLED REGISTERED
Guide for use	
Verification rules	
Collection methods	
Related data	
Source document	
Source organisation	

Practice type

Definition Practice type is the status that the practice has, e.g., access or interim.

Column name practice_type

Table name dim_pho_enrolment_flags

Data type varchar2(20)

Other names

Context

Layout

Data domain ACCESS
INTERIM

Guide for use Context

An Access PHO is one where more than 50% of its enrolled users are high need (Maori, Pacific, Other ethnicity NZdep 9 or 10). Access PHOs must guarantee low co-payments to all enrolled users. The precise level of co-payments are by agreement with the DHB. Interim PHOs are those that do not meet the Access PHO criteria.

An Interim PHO that has some practices that meet with Access criteria. In those cases, the specific practices are eligible to receive Access rates, while the rest of the PHO receives Interim rates.

Verification rules

Collection methods

Related data

Source document

Source organisation

PHO PHO table

Table name	dim_pho_pho
Definition	Secured view of dim_dhb_reference
Primary key	dim_pho_key
Business key	
Guide for use	
Relational rules	
Data content	

DHB

Definition

Column name dhb

Table name dim_pho_pho

Data type varchar2(64)

Other names

Context

Layout

Data domain

Guide for use

Verification rules

Collection methods

Related data

Source document

Source organisation

DHB Code

Definition

Column name dhb_code

Table name dim_pho_pho

Data type varchar2(64)

Other names

Context

Layout

Data domain

Guide for use

Verification rules

Collection methods

Related data

Source document

Source organisation

Establishment date

Definition

Column name date_of_establishment

Table name dim_pho_pho

Data type date

Other names

Context

Layout

Data domain

Guide for use

Verification rules

Collection methods

Related data

Source document

Source organisation

Funding formula

Definition

Column name funding_formula

Table name dim_pho_pho

Data type varchar2(64)

Other names

Context

Layout

Data domain

Guide for use

Verification rules

Collection methods

Related data

Source document

Source organisation

PHO

Definition

Column name pho

Table name dim_pho_pho

Data type varchar2(100)

Other names

Context

Layout

Data domain

Guide for use

Verification rules

Collection methods

Related data

Source document

Source organisation

dim pho key

Definition Generated artificial key

Column name dim_pho_key

Table name dim_pho_pho

Data type integer

Other names

Context

Layout

Data domain

Guide for use

Verification rules

Collection methods

Related data

Source document

Source organisation

pho id

Definition

Column name	pho_id
Table name	dim_pho_pho
Data type	integer

Other names

Context

Layout

Data domain

Guide for use

Verification rules

Collection methods

Related data

Source document

Source organisation

PHO Practice table

Table name	dim_pho_practice
Definition	The PHO Practice Dimension contains a list of all valid PHO Practice combinations.
Primary key	dim_pho_practice_key
Business key	practice_id, pho_id
Guide for use	This table provides a basis for analysing data by Practice within a PHO or by PHO only. It also supplies the Practice and PHO Names.
Relational rules	
Data content	

PHO id

Definition	PHO id is the PerOrg number assigned by HealthPAC to link an Organisation to the contracted legal entity.
Column name	pho_id
Table name	dim_pho_practice
Data type	integer
Other names	
Context	
Layout	
Data domain	
Guide for use	
Verification rules	
Collection methods	
Related data	
Source document	
Source organisation	

PHO name

Definition The legal name of the PHO.

Column name pho_name

Table name dim_pho_practice

Data type varchar2(100)

Other names

Context

Layout

Data domain

Guide for use This table contains all current and previous PHO / Practice combination records. Current records (containing the current name of the PHO/Practice) are identified with the `dss_current_flag?` with a value of `Y?` whereas previous records (containing the original name of the PHO / Practice) are identified with a `dss_current_flag?` value of `N?`.

Prior to the 2005 Q1, the PHO legal name was considered to have been of poor quality and was subsequently changed to null. Since the 2005 Q1 extract, this PHO name is now of a much higher standard. As a result, the PHO legal name has been retrospectively applied to previous records (matching its PHO ID). Therefore if performing searches against previous records, you will find the 2005 Q1 name value only.

Changes to the PHO legal name after 2005 Q1 will be recorded correctly.

Verification rules

Collection methods

Related data pho_id

Source document

Source organisation

Practice id

Definition	Practice id is a code which uniquely identifies a practice within a PHO.
Column name	practice_id
Table name	dim_pho_practice
Data type	varchar2(6)
Other names	
Context	
Layout	AAAAAA
Data domain	
Guide for use	
Verification rules	
Collection methods	
Related data	
Source document	
Source organisation	

Practice name

Definition The name of a practice as assigned by the PHO.

Column name practice_name

Table name dim_pho_practice

Data type varchar2(35)

Other names

Context

Layout

Data domain

Guide for use

Verification rules

Collection methods

Related data

Source document

Source organisation

Prev PHO Practice table

Table name	dim_prev_pho_practice
Definition	view of the dim_pho_practice table
Primary key	dim_prev_pho_practice_key
Business key	practice_id, pho_id
Guide for use	The PHO and Practice that the patient was enrolled or registered with in the previous reporting quarter.
Relational rules	
Data content	

PHO id

Definition	PHO id is the PerOrg number assigned by HealthPAC to link an Organisation to the contracted legal entity.
Column name	pho_id
Table name	dim_prev_pho_practice
Data type	integer
Other names	
Context	
Layout	
Data domain	
Guide for use	
Verification rules	
Collection methods	
Related data	
Source document	
Source organisation	

PHO name

Definition The legal name of the PHO.

Column name pho_name

Table name dim_prev_pho_practice

Data type varchar2(100)

Other names

Context

Layout

Data domain

Guide for use This table contains all current and previous PHO / Practice combination records. Current records (containing the current name of the PHO/Practice) are identified with the `dss_current_flag?` with a value of `Y?` whereas previous records (containing the original name of the PHO / Practice) are identified with a `dss_current_flag?` value of `N?`.

Prior to the 2005 Q1, the PHO legal name was considered to have been of poor quality and was subsequently changed to null. Since the 2005 Q1 extract, this PHO name is now of a much higher standard. As a result, the PHO legal name has been retrospectively applied to previous records (matching its PHO ID). Therefore if performing searches against previous records, you will find the 2005 Q1 name value only.

Changes to the PHO legal name after 2005 Q1 will be recorded correctly.

Verification rules

Collection methods

Related data pho_id

Source document

Source organisation

Practice id

Definition	Practice id is a code which uniquely identifies a practice within a PHO.
Column name	practice_id
Table name	dim_prev_pho_practice
Data type	varchar2(6)
Other names	
Context	
Layout	AAAAAA
Data domain	
Guide for use	
Verification rules	
Collection methods	
Related data	
Source document	
Source organisation	

Practice name

Definition The name of a practice as assigned by the PHO.

Column name practice_name

Table name dim_prev_pho_practice

Data type varchar2(35)

Other names

Context

Layout

Data domain

Guide for use

Verification rules

Collection methods

Related data

Source document

Source organisation

Prev PHO practice_key

Definition	A number that uniquely identifies the record in the PHO Previous Practice table.
Column name	dim_prev_pho_practice_key
Table name	dim_prev_pho_practice
Data type	integer
Other names	
Context	
Layout	
Data domain	
Guide for use	'0' means undefined.
Verification rules	NZHIS system-generated.
Collection methods	
Related data	
Source document	
Source organisation	

Appendix A: Logical to Physical Table Mapping

The following list shows the mapping of the logical, or business, table name to the actual physical table name.

<i>Logical (Business) Table Name</i>	<i>Physical Table Name</i>
PHO Enrolment Flags table	dim_pho_enrolment_flags
PHO PHO table	dim_pho_pho
PHO Practice table	dim_pho_practice
Prev PHO Practice table	dim_prev_pho_practice
Census Fact table	fact_census
FFS Washup Fact table	fact_ffs_washup
PHO Enrolment Fact table	fact_pho_enrolment

Appendix B: List of Shared Dimensions

Dimension tables are the descriptive or lookup-type tables that link to fact tables. This data mart has a number of shared Dimension tables. The definitions for these dimensions are held in a separate data dictionary called "SHARED Dimensions". The table below lists the shared dimensions within this data mart.

<i>Dimension Table</i>	<i>Description</i>
<i>Affiliation table (dim_affiliation)</i>	This table is a matrix of gender and ethnicity code combination. Each row denotes the gender and ethnicity combination applicable to a person at the time of a transaction, i.e. it does not change over time.
<i>Age Band table (dim_age_band)</i>	This dimension table contains a record for each age from 0 to 115 years. The ages are also grouped into 5 and 10 year age bands, the GMS age bands and the PHO CBF Bands
<i>Census Affiliation table (dim_census_affiliation)</i>	This table contains the combinations of Demographic information on the population of NZ broken out by sex and prioritised ethnicity. The ethnicity data is at the level reported in the Census data, ie level 0 (3 ethnic groupings) and level 1 (5 ethnic group)
<i>Census Geofile table (dim_census_geofile)</i>	Demographic data mainly sourced from NZ Statistics. Source: NZ Statistics
<i>Claim Code table (dim_claim_code)</i>	This dimension table contains codes that describe the patient's subsidy status at the time of the event.
<i>Geofile table (dim_geofile)</i>	Demographic data mainly sourced from NZ Statistics. Source: NZ Statistics
<i>Provider table (dim_provider)</i>	This dimension table contains a list of all healthcare providers recorded in the Healthpac CMS perorg database, and used to support claims payment activities. Providers are identified by a number (Provider Code) allocated by a registration body e.g. Me

Appendix C: List of Views

The table views used in this datamart are shown below.

<i>View Name</i>	<i>Description</i>
<i>PHO DHB Reference table (dim_pho_dhb_reference)</i>	This reference table contains a list of DHB codes and names.

Appendix D: Index of Element Names

Actual ffs deduction amount, 16
 Address uncertainty, 27
 Age, 7
 Amount payable, 17
 Careplus end date, 31
 Careplus enrolment status, 32, 93
 Careplus start date, 33
 CBF nhi number, 18
 Census ethnicity 1996, 8
 Census ethnicity 2001, 9
 CSC expiry date, 28
 CSC number, 29
 CSC submitted, 30
 Date of birth, 36
 Deprivation quintile, 37
 DHB, 97
 DHB Code, 98
 DHB name, 34
 dim pho key, 102
 Domicile Code, 11
 DSS count, 19, 35
 DSS Count, 10
 En careplus end date, 38
 En careplus enrolment status, 39
 En careplus start date, 40
 En csc expiry date, 41
 En csc number, 42
 En csc valid, 43
 En deprivation quintile, 44
 En dhb, 45
 En health care user id, 46
 En huhc expiry date, 47
 En huhc number, 48
 En huhc valid, 49
 En meshblock, 50
 En nhi matching type, 51
 En patient death date, 52
 En x coordinate, 53
 En y coordinate, 54
 Encrypted cbf nhi, 20
 Encrypted hcu status, 57
 Encrypted NHI number, 55
 Enrolment status, 94
 Establishment date, 99
 Ethnic group 1, 58
 Ethnic group 2, 59
 Ethnic group 3, 60
 Fee amount, 21
 First contact care, 61
 Funding formula, 100
 Gender, 62
 Health care user id, 63
 Health promotion, 64
 Huhc expiry date, 65
 Huhc number, 66
 Huhc submitted, 67
 Internal patient id, 22
 Match id, 23
 Meshblock, 68
 Message id, 69
 NHI number, 24
 Organisation Id, 70
 Organisation name, 71
 Patient address 1, 73
 Patient address 2, 74
 Patient age category, 75
 Patient city, 76
 Patient ethnic category, 77
 Patient family name, 78
 Patient first given name, 79
 Patient second given name, 80
 Patient suburb, 81
 Patient third given name, 82
 payee number, 25
 PHO, 101
 pho id, 103
 PHO id, 105, 110
 PHO name, 106, 111
 PHO patient id, 72
 Pid status, 83
 Population, 12
 Practice id, 84, 107, 112
 Practice name, 85, 108, 113
 Practice type, 95
 Prev PHO practice_key, 114
 Services to improve access, 86
 Sex, 13
 u6 payment, 90
 vica payment, 91
 X coordinate, 87
 Y coordinate, 88
 Year, 14
 Year quarter, 89

Appendix E: Data Dictionary Template

Introduction	This appendix explains how data element attributes are organised in the data dictionary template.
Order of elements	Within the dictionary, elements are organised by table, and then alphabetically. An alphabetical index at the back of the data dictionary is provided to assist the user in finding specific elements.
Template:	
Administrative status	The operational status (eg, CURRENT, SUPERSEDED) of the data element. No SUPERSEDED data elements will be included in the Dictionaries.
Reference ID	A code that uniquely identifies the data element. If the data element is used in more than one collection, it should retain its Reference ID wherever it appears.
Version number	<p>A version number for each data element. A new version number is allocated to a data element/concept when changes have been made to one or more of the following attributes of the definition:</p> <ul style="list-style-type: none"> - name - definition - data domain, eg, adding a new value to the field. <p>Elements with frequently updated code tables, such as the Facility code table, will not be assigned a new version for changes to data domain.</p>
Version date	The date the new version number was assigned.
Identifying and defining attributes	
Name	A single or multi-word designation assigned to a data element. This appears in the heading for each unique data definition in the Dictionaries. Previous names for the data element are included in the Guide for Use section.
Data element type	<p>DATA ELEMENT—a unit of data for which the definition, identification, representation and permissible values are specified by means of a set of attributes.</p> <p>DERIVED DATA ELEMENT—a data element whose values are derived by calculation from the values of other data elements.</p> <p>COMPOSITE DATA ELEMENT—a data element whose values represent a grouping of the values of other data elements in a specified order.</p>
Definition	A statement that expresses the essential nature of a data element and its differentiation from all other data elements.
Context	A designation or description of the application environment or discipline in which a name is applied or from which it originates. This attribute may also include the justification for collecting the items and uses of the information.

Relational and representational attributes

Data type	The type of field in which a data element is held. For example, character, integer, or numeric.
Field size	The maximum number of storage units (of the corresponding data type) to represent the data element value. Field size does not generally include characters used to mark logical separations of values, eg, commas, hyphens or slashes.
Layout	The representational layout of characters in data element values expressed by a character string representation. For example: <ul style="list-style-type: none"> - 'CCYYMMDD' for calendar date - 'N' for a one-digit numeric field - 'A' for a one-character field - 'X' for a field that can hold either a character or a digit, and - '\$\$,\$\$\$,\$\$\$' for data elements about expenditure.
Data domain	The permissible values for the data element. The set of values can be listed or specified by referring to a code table or code tables, for example, ICD-10-AM 2nd Edition.
Guide for use	Additional comments or advice on the interpretation or application of the data element (this attribute has no direct counterpart in the ISO/IEC Standard 11179 but has been included to assist in clarification of issues relating to the classification of data elements). Includes historical information, advice regarding data quality, and alternative names for this data element.
Verification rules	The rules and/or instructions applied for validating and/or verifying elements, in addition to the formal edits.
Collection method	Comments and advice concerning the capture of data for the particular data element, including guidelines on the design of questions for use in collecting information, and treatment of 'not stated' or non-response (this attribute is not specified in the ISO/IEC Standard 11179 but has been added to cover important issues about the actual collection of data).
Related data	A reference between the data element and any related data element in the Dictionary, including the type of this relationship. Examples include: 'has been superseded by the data element...', 'is calculated using the data element...', and 'supplements the data element...'.

Administrative attributes

Source document	The document from which definitional or representational attributes originate.
Source organisation	The organisation responsible for the source document and/or the development of the data definition (this attribute is not specified in the ISO/IEC Standard 11179 but has been added for completeness). The source organisation is not necessarily the organisation responsible for the ongoing development/maintenance of the data element definition. An example of a source organisation is the National Data Policy Group (NDPG).

Appendix F: Glossary

Note:

 See *Appendix B: Glossary* in separate document.

Appendix G: List of Dimensions

Dimension tables The Primary Health Organisation datamart has a number of shared Dimension tables. The definitions for these dimensions are held in a separate data dictionary called "SHARED Dimensions".

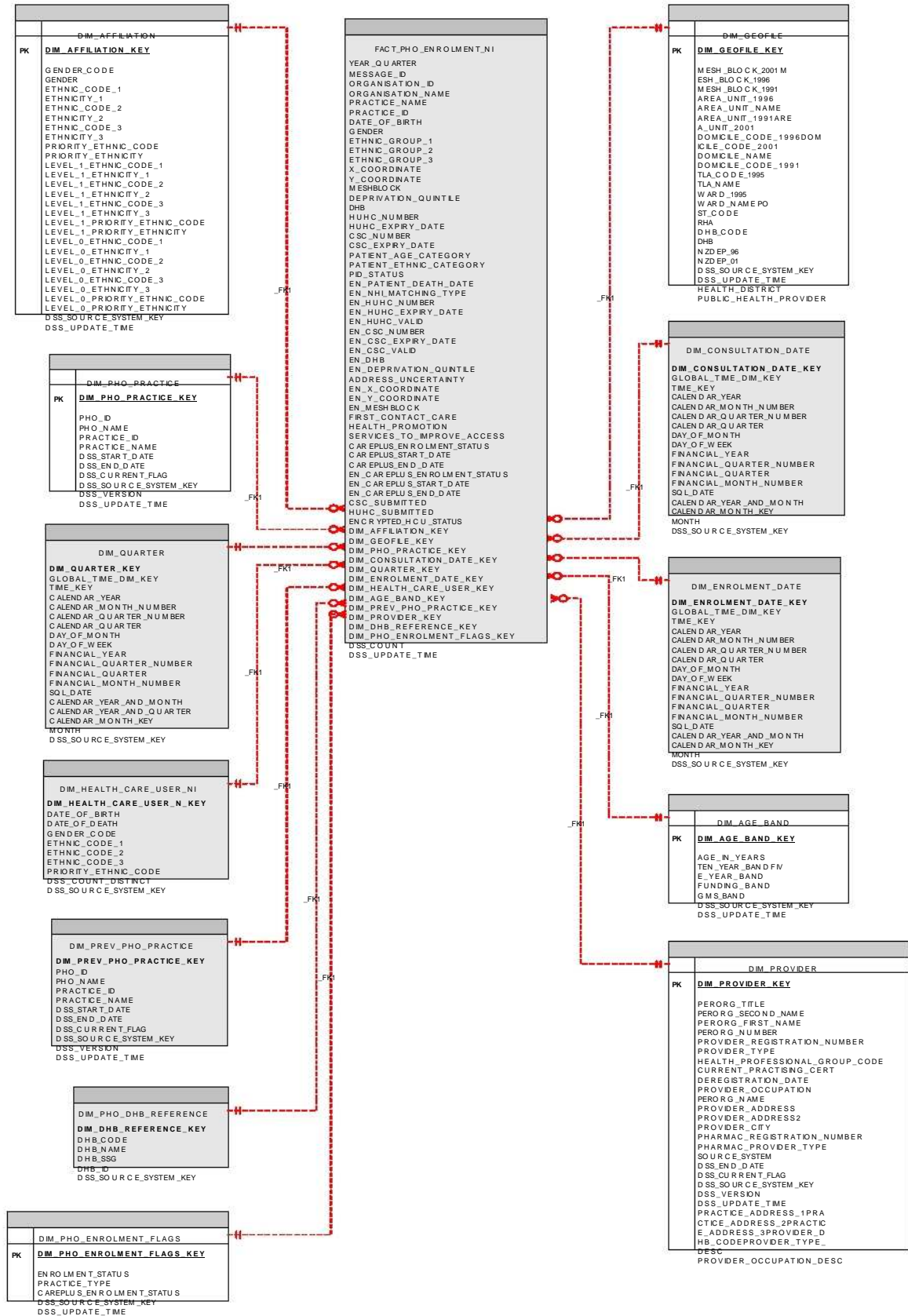
The table below lists the dimensions within this datamart.	
<u>Dimension Table</u>	<u>Description</u>
dim_affiliation	This table holds combinations of all possible ethnic codes and gender.
dim_age_band	This table holds records of all possible ages grouped into bands.
dim_census_affiliation	This table holds demographic information on the population of NZ broken out by sex and ethnicity.
dim_census_geofile	This table holds demographic data mainly sourced from NZ Statistics.
dim_claim_code	This table holds codes that describe the patient's subsidy status at the time of the event.
dim_consultation_date	This table holds date records used as a reference for when the consultation occurred.
dim_enrolment_date	This table holds date records used as a reference for when the enrolment occurred.
dim_dhb_reference	This table holds a list of all DHB codes and names. The PHO DHB Reference table is a view of this table.
dim_geofile	This table holds a demographic data mainly sourced from NZ Statistics.
dim_health_care_user	This table holds information about people who have received healthcare directly from healthcare providers.
dim_payee	This table holds a list of persons or organisations who receive payment from HealthPAC for claims.
dim_payment_date	This table holds date records used as a reference for when the payment was made.
dim_provider	This table holds a list of all healthcare providers.
dim_quarter	This table holds a combination of date and quarter records used as a reference.
dim_visit_date	This table holds date records used as a reference for when the visit occurred.

Appendix H: Alphabetical Index of Data Elements

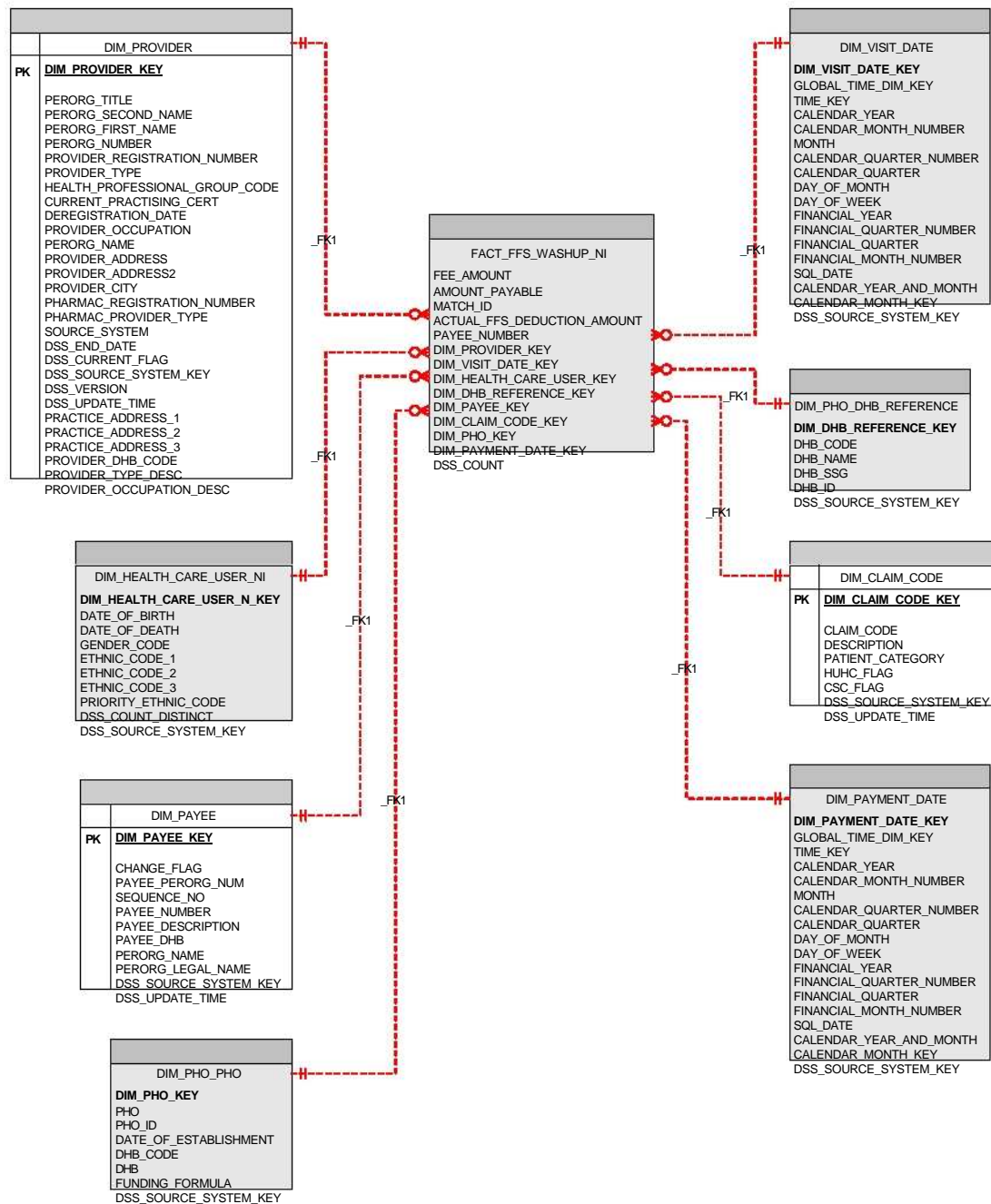
Actual ffs deduction amount, 8		
Address uncertainty, 16	V	
Age, 1	e	MOH
Amount payable, 9	r	
Careplus end date, 17	s	
Careplus enrolment status, 18, 76	i	
Careplus start date, 19	o	
CBF nhi number, 10	:	
Census ethnicity 1996, 2		
Census ethnicity 2001, 3	1	
CSC expiry date, 20	.	
CSC number, 21	2	
CSC submitted, 22	S	
Date of birth, 23	e	
Date of establishment, 79	p	
Deprivation quintile, 24	t	
DHB code, 81	e	
DHB name, 25	m	
DHB, 80	b	
Domicile Code, 4	e	
En careplus end date, 26	r	
En careplus enrolment status, 27	2	
En careplus start date, 28	0	
En csc expiry date, 29	1	
En csc number, 30	1	
En csc valid, 31		
En deprivation quintile, 32		
En dhb, 33		
En health care user id, 34		
En huhc expiry date, 35		
En huhc number, 36		
En huhc valid, 37		
En meshblock, 38		
En nhi matching type, 39		
En patient death date, 40		
En x coordinate, 41		
En y coordinate, 42		
Encrypted cbf nhi, 11		
Encrypted hcu status, 43		
Encrypted NHI number, 44		
Enrolment status, 77		
Ethnic group 1, 46		
Ethnic group 2, 47		
Ethnic group 3, 48		
Fee amount, 12		
First contact care, 49		
Funding formula, 82		
Gender, 50		
Health care user id, 51		
Health promotion, 52		
Huhc expiry date, 53		
Huhc number, 54		
Huhc submitted, 55		
Internal patient id, 13		
Match id, 14		
Meshblock, 56		
NHI number, 15		
Organisation Id, 57		
Patient address 1, 58		
Patient address 2, 59		
Patient age category, 60		
Patient city, 61		

Patient ethnic category, 62
Patient family name, 63
Patient first given name, 64
Patient second given name, 65
Patient suburb, 66
Patient third given name, 67
PHO id, 84, 85, 89
PHO name, 86, 90
PHO patient id, 68
PHO, 83
Pid status, 69
Population, 5
Practice id, 70, 87, 91
Practice name, 71, 88, 92
Practice type, 78
Services to improve access, 72
Sex, 6
X coordinate, 73 Y
coordinate, 74 Year
quarter, 75
Year, 7

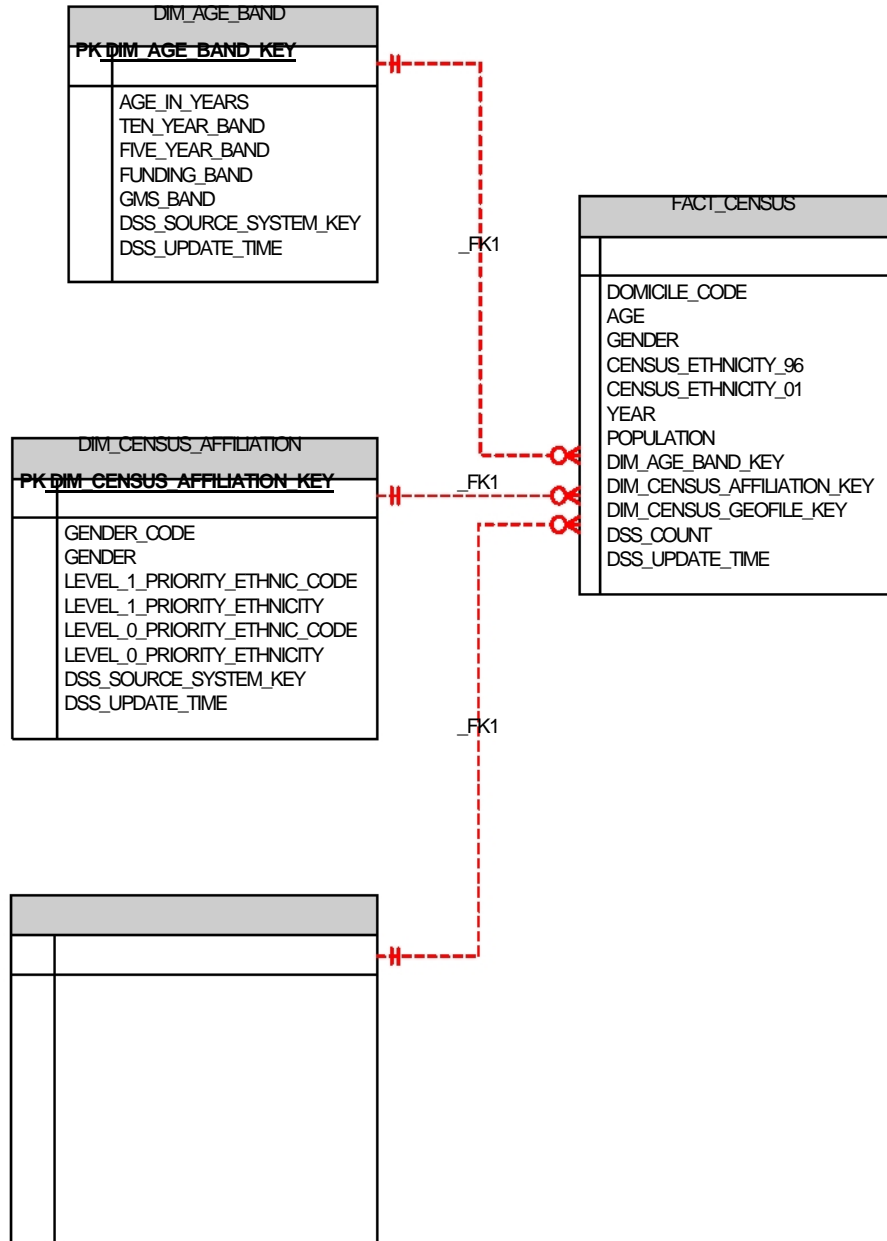
Appendix I: PHO Enrolment Data Model



FFS Washup Data Model



Census Data Model



DIM_CENSUS_GEOFILE

PK DIM_CENSUS_GEOFILE_KEY

DOMICILE_CODE_2001
DOMICILE_NAME
DHB_CODE
DHB_NAME
PUBLIC_HEALTH_PROVIDER_NAME
HEALTH_DISTRICT_NAME
TLA_NAME
NZDEP_01
DSS_SOURCE_SYSTEM_KEY
DSS_UPDATE_TIME