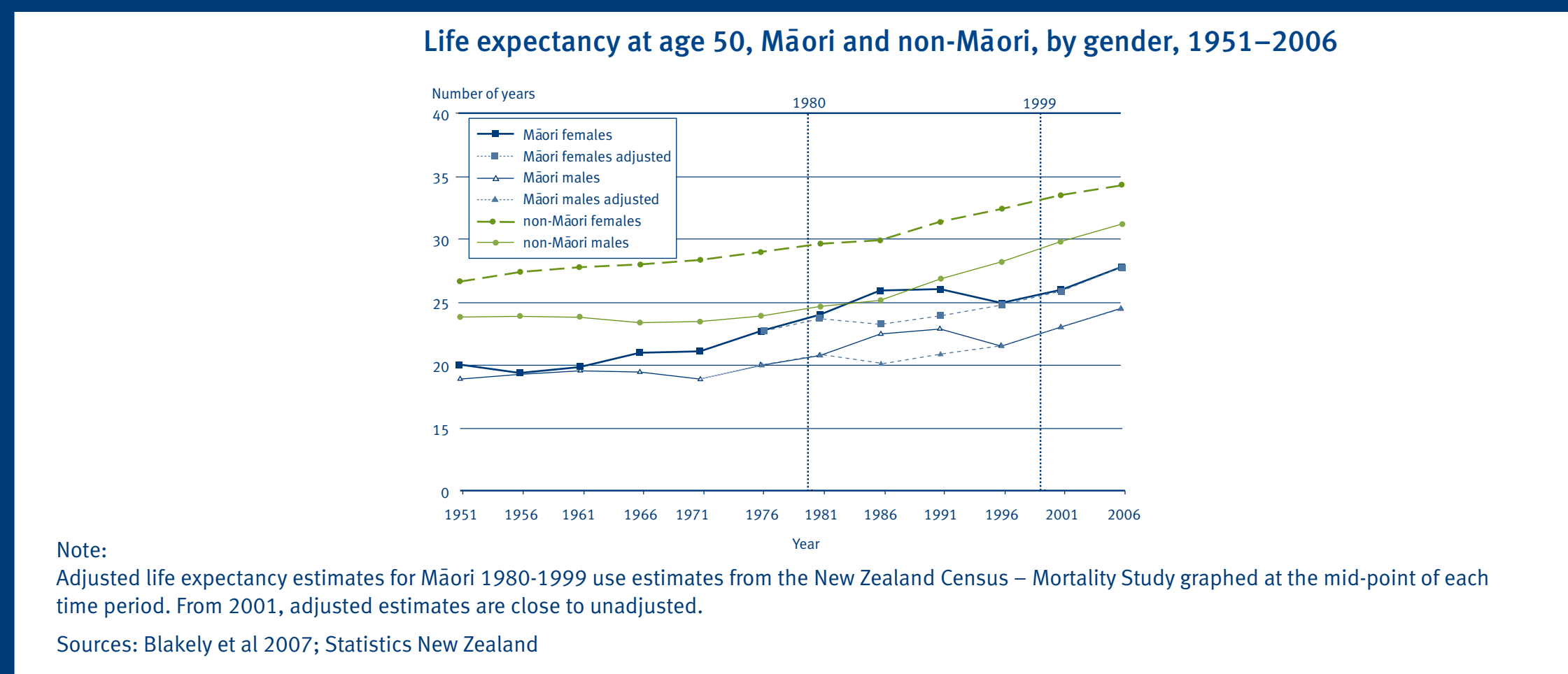


# Tatau Kura Tangata: Health of Older Māori Chart Book 2011

## Health Status

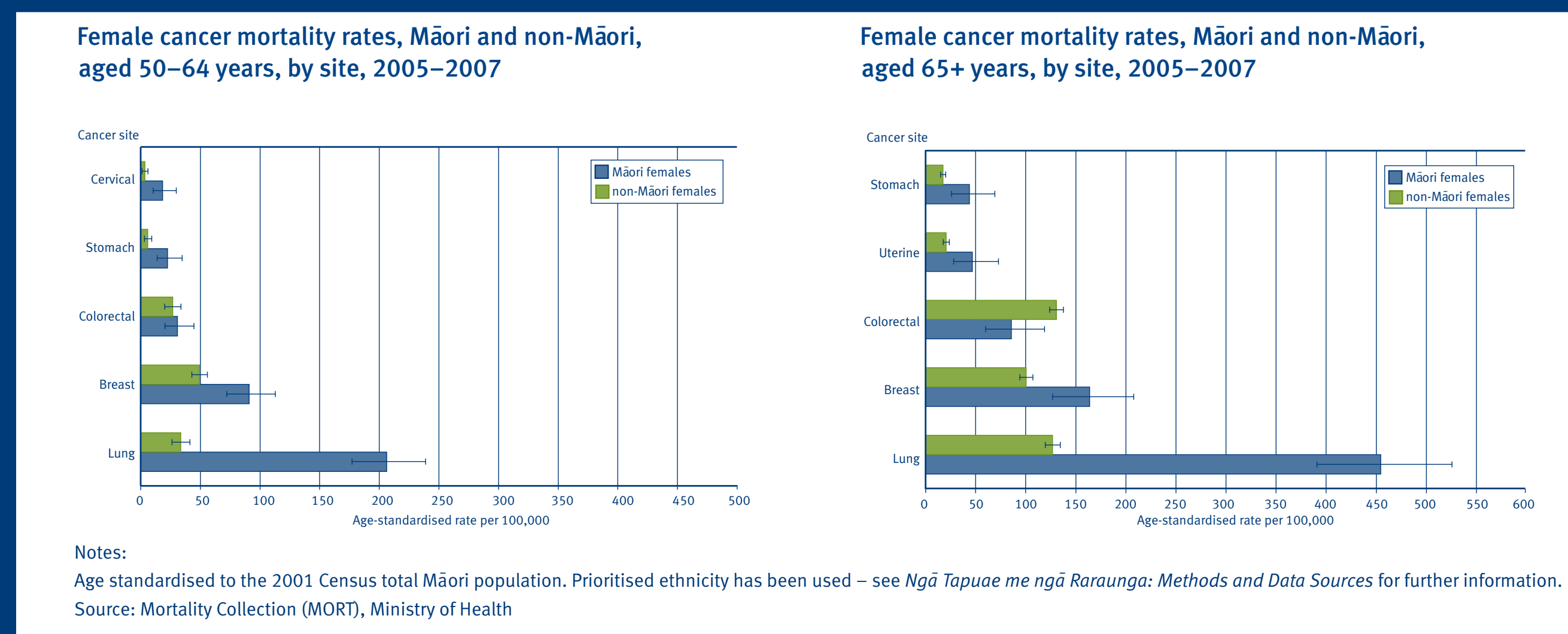
### He aha te roanga o te oranga o te Māori i te tau 50?

- I roto i 2006, te roanga o te oranga i te 50 nui atu 24.6 tau mo ngā tāne Māori (ki 74.6 ngā tau), me te nui atu 27.8 mo ngā wāhine Māori (ki 77.8 ngā tau).
- Engari i roto i 2006, te roanga o te oranga i te tau 50 mo ngā tāne tauwiwi nui atu 31.2 tau mo ngā wāhine tauwiwi, 34.4 tau (ki 81.2 me 84.4 ngā tau).
- I te nuinga, te roanga o te oranga mo te Māori i te tau 50 heke iho i te ono tau mai ia tauwiwi, mo ngā ira tangata e rua.



### He aha ngā mate pukupuku whakatau mo ngā pakeke wāhine Māori?

- Mo ngā wāhine Māori 50–64 ngā tau, ko te mea mate pukupuku ngatahi ko te , pūkahukahu, ū, colorectal, puku, me te whare tangata.
- Mo ngā wāhine Māori 65 nui atu ngā tau ko te mate pukupuku ngatahi ko te pūkahukahu, ū, colorectal, uterine me te puku.
- Ko te mate awharowharo pukupuku ono taima te nui atu mo ngā wāhine Māori 50–64 ngā tau te tata atu ki te 3.5 taima te nui atu mo ngā wāhine 65 nui atu ngā tau i ngā tauwiwi wāhine rite tonu ngā tau.



### He aha nga tūtohu ischaemic mate manawa?

Indicator	Males				Females			
	50–64 years		65+ years		50–64 years		65+ years	
	Māori	non-Māori	Māori	non-Māori	Māori	non-Māori	Māori	non-Māori
Ischaemic heart disease mortality, 2005–07, rate per 100,000	441.0 (396.4–489.2)	112.0 (105.4–118.8)	1540.5 (1407.3–1683.0)	739.7 (722.3–757.5)	144.1 (120.1–171.6)	24.8 (21.9–28.1)	945.7 (855.5–1042.9)	407.3 (398.0–416.7)
Ischaemic heart disease hospitalisation, 2007–09, rate per 100,000	2054.6 (1939.9–2176.1)	1291.5 (1266.2–1317.3)	3134.0 (2871.1–3421.0)	3002.9 (2938.6–3068.6)	1412.3 (1324.5–1505.9)	425.4 (409.5–441.9)	2694.6 (2468.8–2941.0)	1435.6 (1391.7–1480.9)
All re-vascularisation (CABG* and angioplasty) heart disease procedures, 2007–09, rate per 100,000	396.9 (353.2–446.1)	326.0 (313.9–338.5)	516.0 (422.9–629.5)	680.8 (650.3–712.7)	196.2 (167.8–229.5)	69.4 (63.5–75.9)	303.1 (237.4–387.0)	228.3 (211.2–246.8)

Notes: Age standardised to the 2001 Census total Māori population. Hospitalisations and procedures are ethnicity-adjusted rates; all other rates use prioritised ethnicity – see Ngā Tapuae me ngā Raraunga: Methods and Data Sources for further information. \* Coronary artery bypass graft.

Sources: Mortality Collection (MORT), Ministry of Health. National Minimum Dataset (Hospital Events) (NMDS), Ministry of Health

- I waenganui i ngā tau 50 – 64 tau, ko te mate whakatau e pā ana ki te ischaemic mate manawa tata tonu ono taima te nui atu mo ngā wāhine Māori i ngā wāhine tauwiwi.
- Mo ngā tāne i roto i te 65 nui atu te tau rōpu, ischaemic mate manawa mate rua taima te nui atu mo te Māori ia tauwiwi, engari, kaore i tino rereke atu i te hohiperatanga e pā ana ki te ischaemic mate manawa.

### He aha te putake nui e mate ai ngā pakeke Māori?

Major causes of death, ranked by age-standardised mortality rates, Māori and non-Māori, by gender, 2005–2007

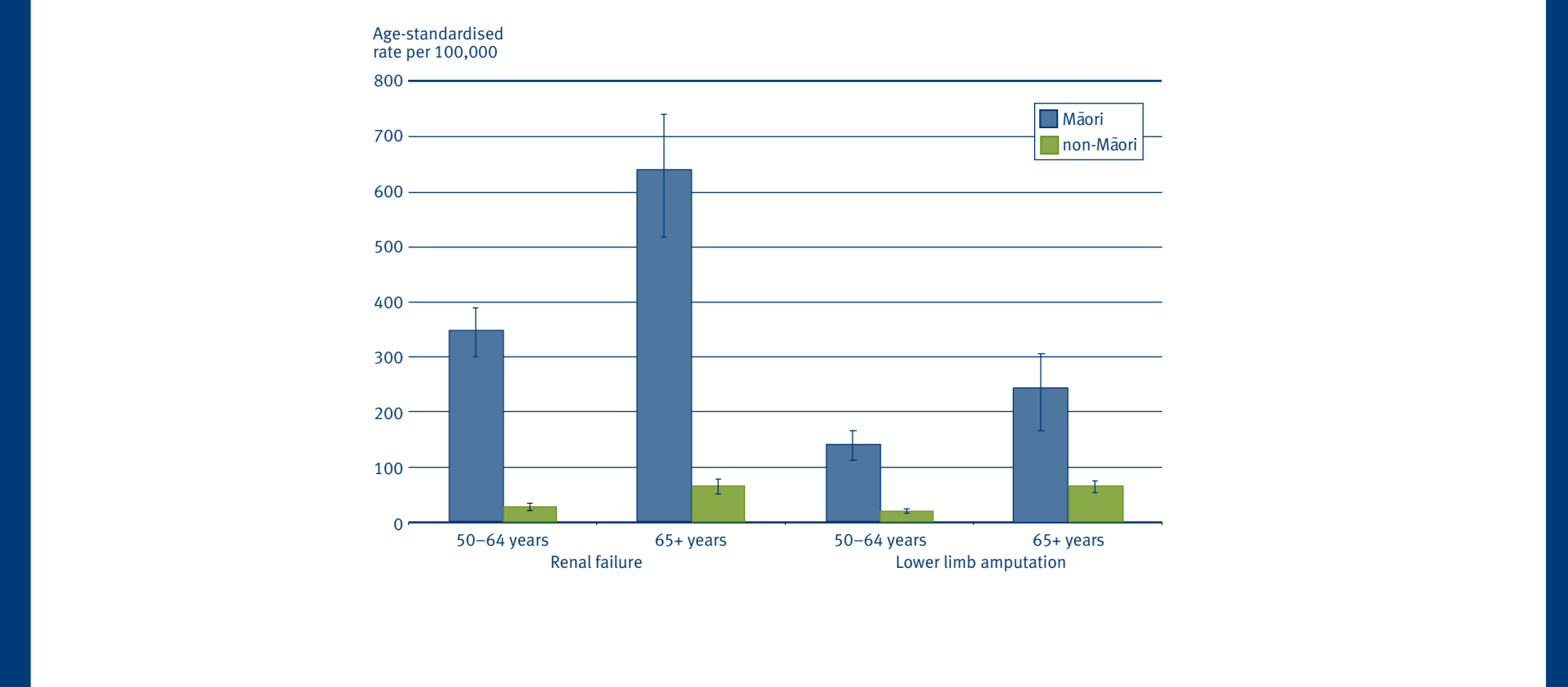
	50–64 years		65+ years	
	Māori	non-Māori	Māori	non-Māori
<b>Males</b>	Ischaemic heart disease	Ischaemic heart disease	Ischaemic heart disease	Ischaemic heart disease
	Lung cancer	Lung cancer	Lung cancer	Stroke
	Diabetes	Colorectal cancer	Diabetes	Lung cancer
	Other forms of heart disease	Stroke	Chronic obstructive pulmonary disease	Chronic obstructive pulmonary disease
	Chronic obstructive pulmonary disease	Suicide and self-inflicted injury	Other forms of heart disease	Colorectal cancer
<b>Females</b>	Lung cancer	Breast cancer	Ischaemic heart disease	Ischaemic heart disease
	Ischaemic heart disease	Lung cancer	Lung cancer	Stroke
	Breast cancer	Colorectal cancer	Chronic obstructive pulmonary disease	Chronic obstructive pulmonary disease
	Diabetes	Ischaemic heart disease	Stroke	Colorectal cancer
	Chronic obstructive pulmonary disease	Stroke	Diabetes	Lung cancer

Notes: Prioritised ethnicity has been used – see Ngā Tapuae me ngā Raraunga: Methods and Data Sources for further information. Age standardised to the 2001 Census total Māori population.

- Mō ngā tāne ko te ischaemic mate manawa te putake nui o te mate mo te Māori me tauwiwi i ngā tau rite tonu mai 2005–2007.
- Mo ngā wāhine, ko te putake nui o te mate nui 2005–2007 ko: ischaemic mate manawa mo te Māori me tauwiwi 65 nui atu ngā tau; mate atewharowharo pukupuku mo te Māori 50–64 nga tau; me te mate ūtaetae mo tauwiwi 50–64 ngā tau.
- Ko te mate atewharowharo pukupuku te taumata tiketike mo te Māori engari rā mo tauwiwi kaore e pa ki ngā tāne 50–64 ngā tau.

### He aha etahi o ngā tūtohu mo ngā uauatanga o te mate huka mo ngā pakeke tāne Māori?

Male renal failure and lower limb amputation rates with concurrent diabetes, Māori and non-Māori



- Tino nui atu te rerekētanga o ngā pakeke Māori me ngā tauwiwi tāne e pā ana ki ngā uauatanga o te mate huka.
- Ko te whakatau o te mate o ngā tākihi, me te whakapā atu ki te mate huka 12 taima te nui atu o ngā tāne Māori 50–64 ngā tau i ngā tāne tauwiwi rite tonu ngā tau.

MANATŪ HAUORA  
MINISTRY OF HEALTH

**Tatau Kura Tangata:**  
Health of Older Māori  
Chart Book 2011

2011

Te Kāwanatanga o Aotearoa

### Kei hea atu ano etahi kōrero?

Tono atu to kape o *Tatau Kura Tangata: Health of Older Māori Chart Book 2011*.

Emera: [moh@wickliffe.co.nz](mailto:moh@wickliffe.co.nz)

Waea: (04) 496 2277

(kōrerotia HP nama 5299)

Tango mai:

[www.maorihealth.govt.nz](http://www.maorihealth.govt.nz)