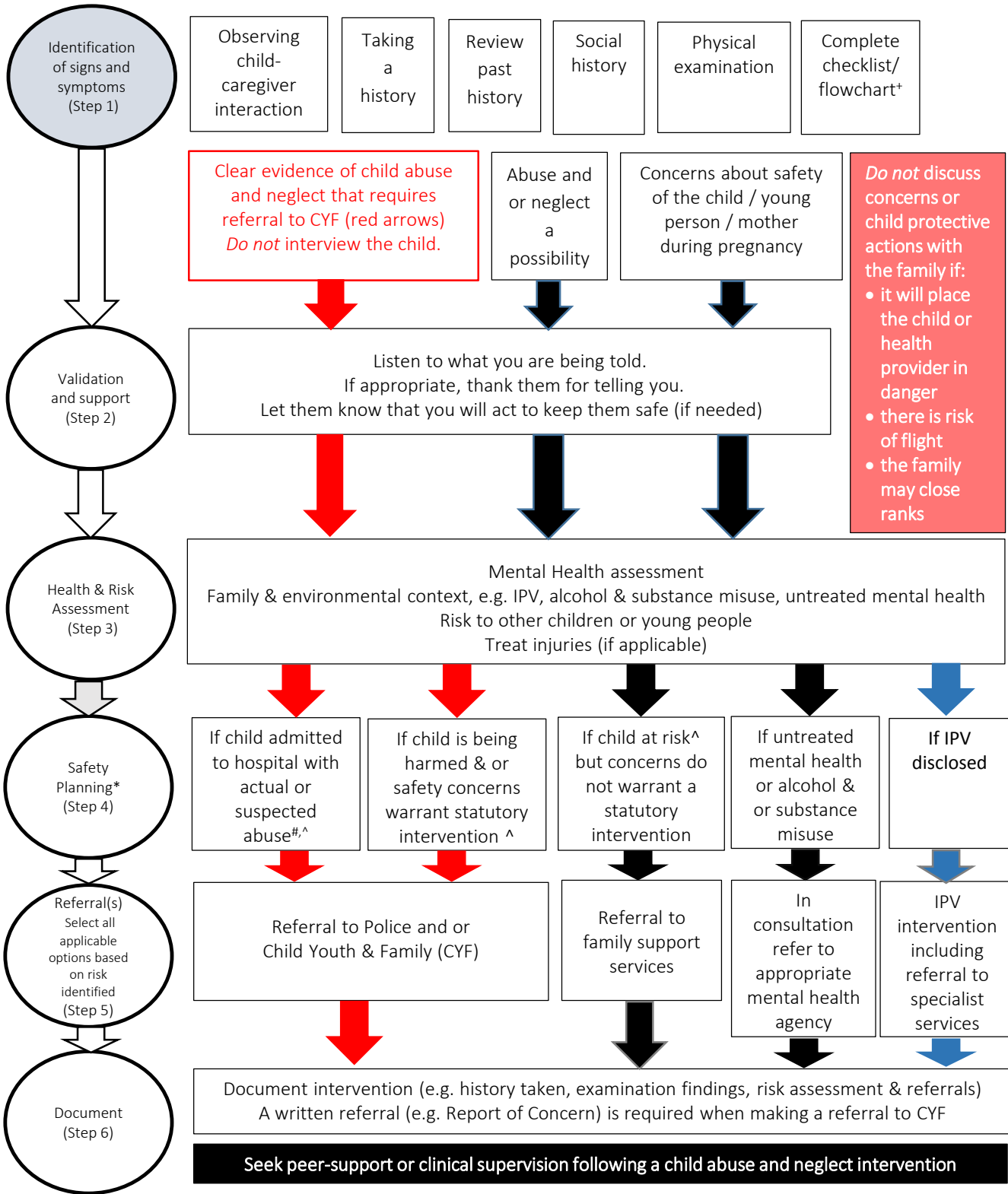


Patient presents to health professional complete initial clinical assessment

Consult with either an experienced colleague, Paediatrician and/or, CYF Social Worker at least once during any child abuse and neglect intervention



*Red pathway for statutory intervention
 *Black pathway for non-statutory intervention
 *Blue pathway specialist service, e.g. FV, MHAS
 * Tool for use in Emergency Departments for child up to 2 years age
 # Standard interagency protocol, Memorandum of understanding between DHB, CYF and Police and associated schedule 1
 ^consult with experienced colleague and/or Multidisciplinary team prior to a referral

Insert local information /DHB logo here

Seek peer-support or clinical supervision following a child abuse and neglect intervention