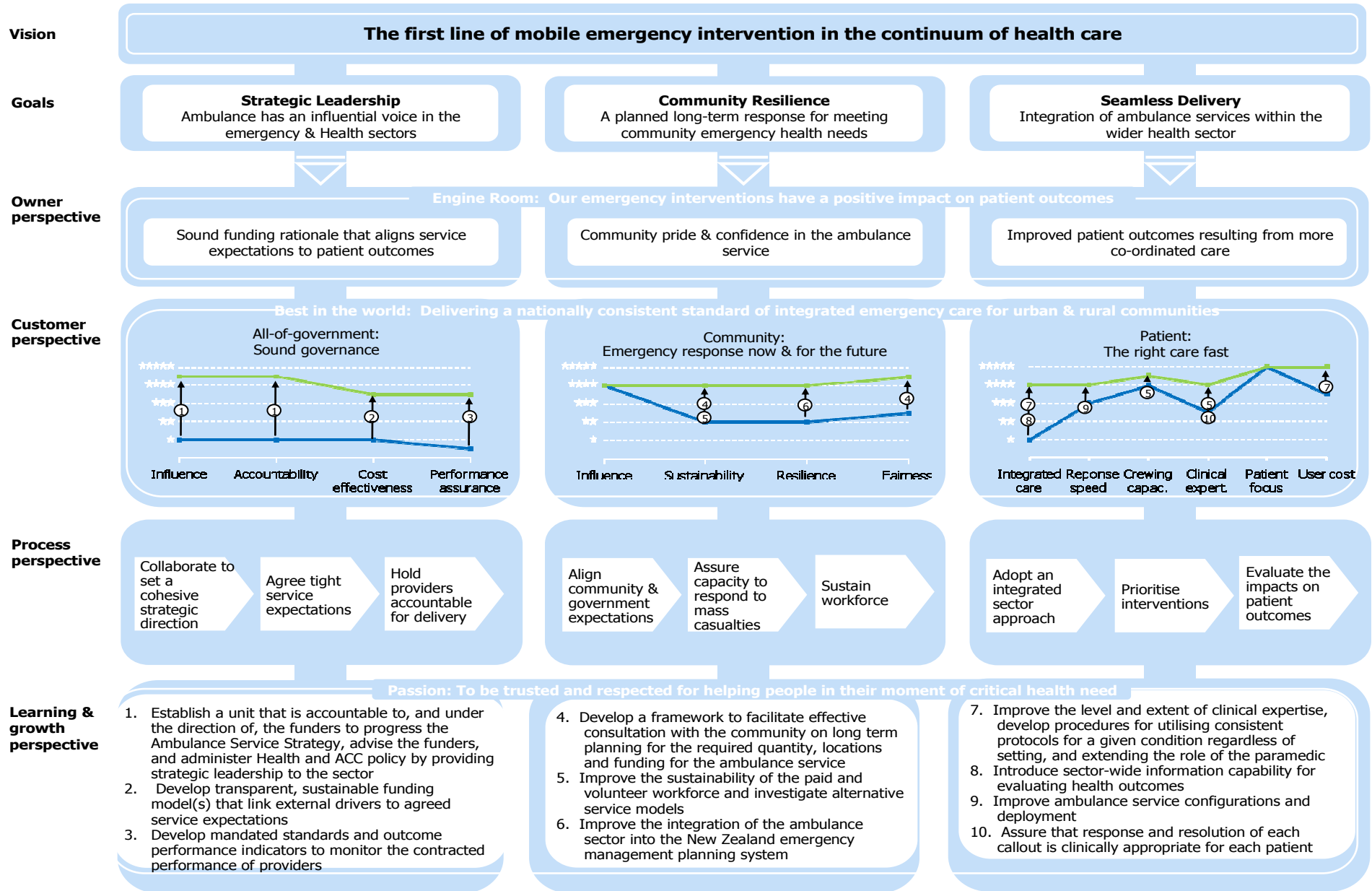


New Zealand Ambulance Service Strategy Map



Key

- "Today"
- "Tomorrow"
- ⊙ See corresponding number below for related initiative for change

New Zealand Ambulance Service Strategy
High Level Action Plan

| Initiative | Short Description | Actions | 2009 | 2010 | 2011 | 2012-2015 | 2015-2020 |
|------------|--|--|------|------|------|-----------|-----------|
| 1 | Establish a unit to progress Health and ACC policy | Establish the accountable strategic leadership function to manage investment in the sector by Health and ACC | | | | | |
| 2 | Funding model and processes | <p>Improve alignment of ACC and Health funding, including, for example, funding in bulk or by transport</p> <p>Identify required funding to achieve desired performance expectations</p> <p>Explore incorporating DHB-funded inter-hospital transfers into a nationally coordinated activity</p> | | | | | |
| 3 | Mandatory standards development, implementation and monitoring | <p>Develop new and adapt existing processes to provide for the establishment of mandatory comprehensive <i>operating</i> performance expectations</p> <p>Develop new and adapt existing processes to provide for the establishment of mandatory comprehensive <i>clinical</i> performance expectations</p> <p>Develop outcome based performance indicators for the ambulance service and provide performance assurance to Government and communities</p> | | | | | |
| 4 | Consultation with community on long term planning | <p>Develop a framework to facilitate effective consultation with the community on long-term planning</p> <p>Review funder/provider relationship to assess the desired arrangement</p> | | | | | |
| 5 | Improve the stability of the paid and volunteer workforce and investigate alternative service models | <p>Evaluate options for rural service delivery, including expanding the availability of Advanced Life Support paramedics in rural communities</p> <p>Develop criteria for success in rural communities</p> <p>Develop a strategy for attracting and retaining volunteers</p> <p>Investigate and trial alternative methods of crewing ambulances to achieve full crewing wherever possible</p> | | | | | |
| 6 | Integrate with Emergency Management planning system | <p>Determine and move towards the preferred capacity and capability for ambulance response to mass casualty and civil defence events</p> <p>Encourage integration between emergency services</p> | | | | | |
| 7 | Health sector linkages, consistent protocols, and extend role of paramedic | <p>Establish formal links to the primary health care sector</p> <p>Increase and standardise the level of ambulance workforce skill</p> <p>Extend the role of the paramedic</p> | | | | | |
| 8 | Information capability to evaluate patient outcomes | Improve IT capabilities for ambulance services across the sector | | | | | |
| 9 | Improve ambulance service configuration and deployment | Review the configuration of ambulance services | | | | | |
| 10 | Strengthen triage systems and alternate resolution of call-outs | <p>Identify mechanisms to support ambulance staff to resolve a patient's condition by treating at home or transporting to the most appropriate facility, including medical centres or after-hours clinics</p> <p>Improve clinical decision-making support within Emergency Ambulance Communications Centres</p> | | | | | |