
Appendix to Sector Change Notification

Collecting Supplementary Consumer Records in PRIMHD

Prepared by:	Lee Gibson
Owner	Ron Wood
Date:	9 October 2015
Version:	0.5
Status:	Release Candidate

Confidentiality:

The information contained in this document is proprietary to the Ministry of Health. This document must not be used, reproduced, or disclosed to others except employees of the recipient of this document who have the need to know for the purposes of this assignment. Prior to such disclosure, the recipient of this document must obtain the agreement of such employees or other parties to receive and use such information as proprietary and confidential and subject to non-disclosure on the same conditions as set out above.

The recipient by retaining and using this document agrees to the above restrictions and shall protect the document and information contained in it from loss, theft and misuse.

Table of Contents

1. Introduction	4
1.1. Background	4
1.2. Solution.....	4
1.3. Purpose	4
1.4. Impacted Systems	5
1.5. Impacted Stakeholders	5
2. Current State	7
2.1. Data Structure	7
2.2. Referral Discharge XML Documents	8
2.3. Acknowledgement Documents	9
3. Future Structure	12
3.1. New XML Elements	12
3.2. Acknowledgement	15
Appendix A – Document Control	17
A.1. Document Information	17
A.2. Distribution List	Error! Bookmark not defined.
A.3. Associated Documents	17
A.4. Document Contributors	17

1. Introduction

1.1. Background

There is a requirement in the scope of the NCAMP 2016 project to allow—at an aggregated level—for an oversight of diachronic changes in social indicators among consumers of mental health services. PRIMHD, the Ministry of Health’s (the ministry’s) mental health data collection, has been selected as the instrument for collecting mental health consumers’ social indicators, and for enabling the required oversight of changing volumes in these indicators’ values over time.

The four social indicators that will be required to be collected are:

- Wellness (Relapse Prevention) Plan
- Accommodation
- Employment Status
- Education and Training Status

Strictly speaking, the Wellness Plan element is not a social indicator, but we will implement it in conjunction with the others which clearly are. The code sets for these four new elements have been defined in the HISO PRIMHD code set standard.

The vision is for the collected data to be aggregated to a DHB, provider, or perhaps even a global level to measure volume changes in consumers’ social indicators from year to year to understand how mental health services are influencing consumers’ lifestyles and to what extent. These four new attributes are referred to in the HISO data and code set standards as Supplementary Consumer Records. Formerly, they were part of—or were intended to be part of—the mental health agreement reporting framework.

To create the required oversight for these social indicators with potentially diachronically changing values, we will expect mental health providers to submit Supplementary Consumer Records at a minimum at the start and end of each referral, and annually in the case of referrals lasting longer than one year. If one of the indicators’ values changes during the course of mental health intervention, a new Supplementary Consumer Record must also be submitted. The mental health and addiction services team will provide a guidance document for these Supplementary Consumer Records towards the end of 2015.

1.2. Solution

In terms of collection, the solution we outline in Section 3 is to collect these social indicators inside Supplementary Consumer Record elements nested inside the Referral Discharge element of the Referral Discharge XML document. An unlimited number of these elements will be permitted inside each Referral Discharge element.

As mentioned above, the solution will be dependent on mental health providers submitting—at a minimum—new supplementary consumer records at the beginning and end of a referral and once annually for referrals spanning more than one year, as well as whenever one of the indicators’ values changes during the mental health intervention.

1.3. Purpose

This paper is concerned specifically with describing the technical collection of the new Supplementary Consumer Record data in Referral Discharge XML files for the benefit of

achieving the understood goal of measuring diachronic changes in volumes for the desired social indicators. We will describe how we will collect these records via PRIMHD Online in an update to the PRIMHD user manual. This paper intends to:

- describe—in part—the present state of the structure for collecting and storing PRIMHD's data
- describe the future structure for collecting the Supplementary Consumer Records in PRIMHD

1.4. Impacted Systems

Here follows a rough list of systems that would certainly or presumably be impacted by the proposed change:

System	Impact
PRIMHD ODS	PRIMHD's operational data store (ODS) will need to be enabled to collect and persist Supplementary Consumer Record data.
PRIMHD Online	Allow for the collection and maintenance of Supplementary Consumer Record data.
PRI Data Mart	Incorporate new Supplementary Consumer Record data, and allow for quantifying diachronic changes in these.
DHB and NGO mental health provider's software solutions	These will need to enable the collection and submission of Supplementary Consumer Record data.

1.5. Impacted Stakeholders

The following stakeholders who could be impacted by the proposed change have been identified.

Stakeholder	Impact
DHB and NGO providers of mental health support services	Collection and submission of Supplementary Consumer Records
Software partners to the above stakeholders	Enabling collection and submission of Supplementary Consumer Records
The ministry's Data Quality team	Quality assurance of Supplementary Consumer Records
The ministry's Analytical Services team	Creating knowledge from Supplementary Consumer Records
The ministry's Data Warehouse team	Supporting reporting requirements for analysis of Supplementary Consumer Records
The ministry's Mental Health Service Improvement team	Consuming aggregated Supplementary Consumer Records and resultant knowledge

2. Current State

2.1. Data Structure

PRIMHD stores the latest received, most up-to-date referral discharge records in a referral discharge master table. Previous versions of referral discharge records are demoted to a referral discharge archive table. Due to this, there is a potentially one-to-many relationship between the master records and their associated previous versions. Each referral is linked—via a Document ID generated by PRIMHD—to a Document record, which stores more information about the XML document in which the individual referral was submitted. Through this relationship, we can infer the order in which different versions of the same Referral Discharge record were submitted by a mental health provider.

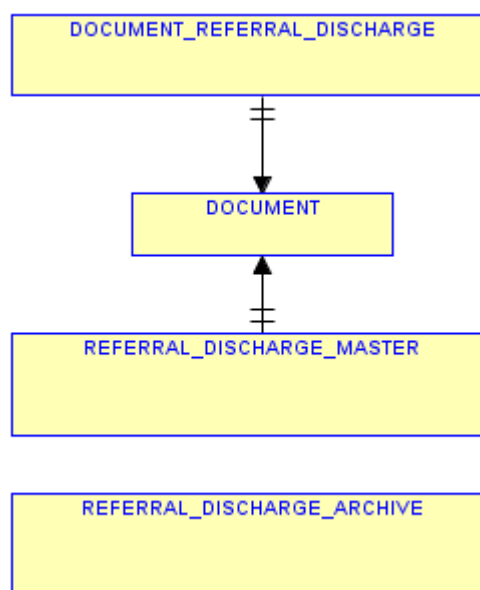


Figure 1—PRIMHD ODS Current State Referral Discharge

Other types—Activity, Classification, Collection Occasion, and Legal Status—also have master and archived versions of themselves conforming to the same rubric as referral discharge records in PRIMHD ODS. When an updated record is received from a mental health provider, the previously received version of the record is demoted to the archive table, and the updated record is persisted in the master table. There may be multiple records of these types associated with a given referral discharge record, each identified by an ID and a date, documenting the history of events that have occurred during the referral as is the case for activity records, or recording progress of outcomes during the referral as is the case for collection occasion records, or documenting histories of diagnoses made during referrals as is the case for classification records. As with Referral Discharge records, each master and archived record of these types references the Document ID for the XML document in which it was submitted, and through this Document ID, we can identify when the record was extracted or submitted. Figure 2—PRIMHD ODS Current State Data Structure shows the one-to-many relationships between XML documents and these other records' master and archive types, compared to the one-to-one relationship between XML documents and referral discharge master and archive types.

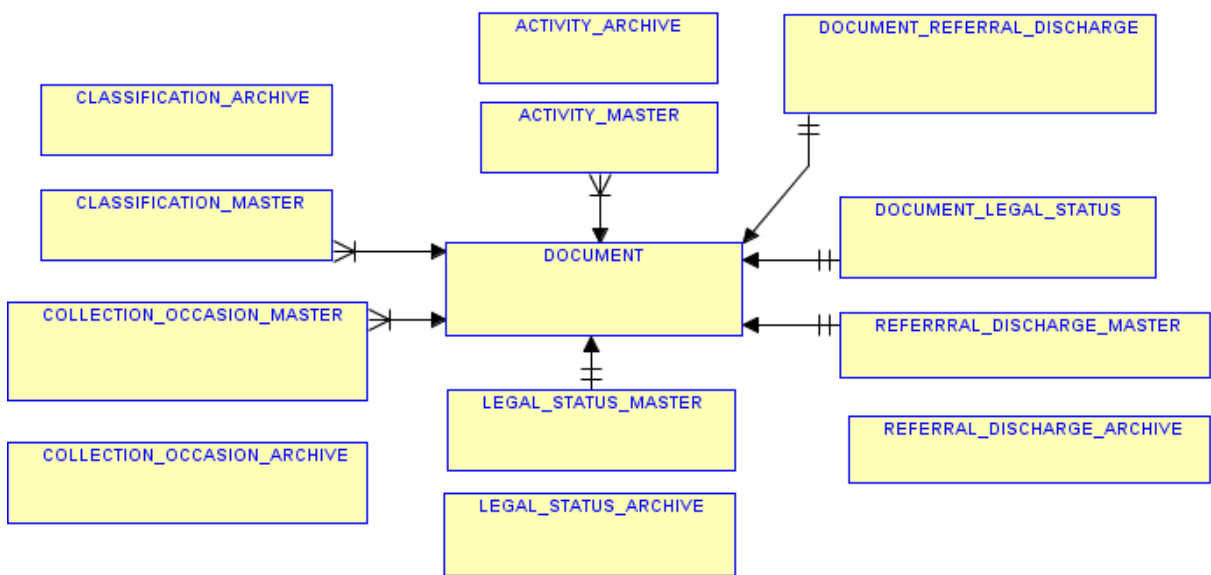


Figure 2—PRIMHD ODS Current State Data Structure

Whereas all data in the master types are available to data warehouse users for analysis and reporting, the archive types are not, rendering them unusable for solution design.

2.2. Referral Discharge XML Documents

The referral discharge XML schema presently requires that referral discharge XML documents conform to the following basic structure, with the potential for unlimited numbers of the complex elements Collection Occasion, Outcome Item, Activity, and Classification (in red below):

```

<REFERRAL_DISCHARGE>
  <FILE_VERSION/>
  <REFERRAL_ID/>
  <SUBMITTING_ORG_ID/>
  <ORGANISATION_ID/>
  <EXTRACT_FROM_DATE_TIME/>
  <EXTRACTED_DATE_TIME/>
  <DELETED_FLAG/>
  <TEAM_CODE/>
  <EVENT_HCU_ID/>
  <SEX/>
  <DATE_OF_BIRTH/>
  <REFERRAL_FROM/>
  <REFERRAL_TO/>
  <REFERRAL_END_CODE/>
  <START_DATE_TIME/>
  <END_DATE_TIME/>
  <COLLECTION_OCCASION>
    <COLLECTION_OCCASION_ID/>
    <REASON_FOR_COLLECTION/>
    <COLLECTION_OCCASION_DATE/>
    <HEALTHCARE_WORKER_CPN/>
    <OUTCOME_EPISODE_ID/>
    <PROTOCOL_VERSION/>
    <FOCUS_OF_CARE/>
    <OUTCOME_TOOL>
      <OUTCOME_TOOL_TYPE_VERSION/>
      <MODE_OF_ADMINISTRATION/>
      <COLLECTION_STATUS/>
      <COMPLETION_DATE/>
      <OUTCOME_ITEM>
        <OUTCOME_ITEM_CODE/>
        <OUTCOME_ITEM_VALUE/>
      </OUTCOME_ITEM>
    </OUTCOME_TOOL>
  </COLLECTION_OCCASION>
</REFERRAL_DISCHARGE>
    
```



```

</COLLECTION_OCCASION>
<ACTIVITY>
  <ACTIVITY_ID/>
  <ACTIVITY_TYPE/>
  <ACTIVITY_SETTING/>
  <HEALTHCARE_WORKER_CPN/>
  <START_DATE_TIME/>
  <END_DATE_TIME/>
</ACTIVITY>
<CLASSIFICATION>
  <CLASSIFICATION_CODE_ID/>
  <CLINICAL_CODING_SYSTEM_ID/>
  <DIAGNOSIS_TYPE/>
  <CLINICAL_CODE_VALUE/>
  <START_DATE_TIME/>
  <END_DATE_TIME/>
</CLASSIFICATION>
</REFERRAL_DISCHARGE>

```

An unlimited number of Activity records, for example, may be nested within the Referral Discharge element to document the history of events or interventions that have occurred during the referral for mental health services. Each time a mental health provider submits a referral discharge XML document, it must restate any Activity elements that may have been previously submitted to ensure that these prevail as master Activity records. The same applies to the other complex elements collected within Referral Discharge XML documents in red above.

2.3. Acknowledgement Documents

Referral Discharge documents are acknowledged in the following basic format, with unlimited elements of the types in red below permitted in relation to their parent:

```

<PRIMHD_ACK>
  <DOCUMENT_TYPE/>
  <DOCUMENT_IDENTIFIER/>
  <STATUS/>
  <NUM_ERRORS/>
  <NUM_WARNINGS/>
  <TIME_STAMP/>
  <ERROR_AND_WARNING_DETAILS>
    <REFERRAL_DISCHARGE>
      <WARNING>
        <WARNING_REF/>
        <WARNING_TITLE/>
        <WARNING_MESSAGE/>
      </WARNING>
      <ERROR>
        <ERROR_REF/>
        <ERROR_TITLE/>
        <ERROR_MESSAGE/>
      </ERROR>
      <FILE_VERSION/>
      <REFERRAL_ID/>
      <SUBMITTING_ORG_ID/>
      <ORGANISATION_ID/>
      <EXTRACT_FROM_DATE_TIME/>
      <EXTRACTED_DATE_TIME/>
      <TEAM_CODE/>
      <EVENT_HCU_ID/>
      <SEX/>
      <DATE_OF_BIRTH/>
      <REFERRAL_FROM/>
      <START_DATE_TIME/>
      <COLLECTION_OCCASION>
        <WARNING>
          <WARNING_REF/>
          <WARNING_TITLE/>
          <WARNING_MESSAGE/>
        </WARNING>
      <ERROR>

```

```

        <ERROR_REF/>
        <ERROR_TITLE/>
        <ERROR_MESSAGE/>
    </ERROR>
    <COLLECTION_OCCASION_ID/>
    <REASON_FOR_COLLECTION/>
    <COLLECTION_OCCASION_DATE/>
    <HEALTHCARE_WORKER_CPN/>
    <OUTCOME_EPISODE_ID/>
    <PROTOCOL_VERSION/>
    <FOCUS_OF_CARE/>
    <OUTCOME_TOOL>
        <WARNING>
            <WARNING_REF/>
            <WARNING_TITLE/>
            <WARNING_MESSAGE/>
        </WARNING>
        <ERROR>
            <ERROR_REF/>
            <ERROR_TITLE/>
            <ERROR_MESSAGE/>
        </ERROR>
        <OUTCOME_TOOL_TYPE_VERSION/>
        <MODE_OF_ADMINISTRATION/>
        <COLLECTION_STATUS/>
        <COMPLETION_DATE/>
        <OUTCOME_ITEM>
            <WARNING>
                <WARNING_REF/>
                <WARNING_TITLE/>
                <WARNING_MESSAGE/>
            </WARNING>
            <ERROR>
                <ERROR_REF/>
                <ERROR_TITLE/>
                <ERROR_MESSAGE/>
            </ERROR>
            <OUTCOME_ITEM_CODE/>
            <OUTCOME_ITEM_VALUE/>
        </OUTCOME_ITEM>
    </OUTCOME_TOOL>
</COLLECTION_OCCASION>
<ACTIVITY>
    <WARNING>
        <WARNING_REF/>
        <WARNING_TITLE/>
        <WARNING_MESSAGE/>
    </WARNING>
    <ERROR>
        <ERROR_REF/>
        <ERROR_TITLE/>
        <ERROR_MESSAGE/>
    </ERROR>
    <ACTIVITY_ID/>
    <ACTIVITY_TYPE/>
    <ACTIVITY_SETTING/>
    <START_DATE_TIME/>
</ACTIVITY>
<CLASSIFICATION>
    <WARNING>
        <WARNING_REF/>
        <WARNING_TITLE/>
        <WARNING_MESSAGE/>
    </WARNING>
    <ERROR>
        <ERROR_REF/>
        <ERROR_TITLE/>
        <ERROR_MESSAGE/>
    </ERROR>
    <CLASSIFICATION_CODE_ID/>
    <CLINICAL_CODING_SYSTEM_ID/>
    <DIAGNOSIS_TYPE/>
    <CLINICAL_CODE_VALUE/>
    <START_DATE_TIME/>
</CLASSIFICATION>
<PROCESSING_PARAMETER>

```

```
<WARNING>
  <WARNING_REF/>
  <WARNING_TITLE/>
  <WARNING_MESSAGE/>
</WARNING>
<ERROR>
  <ERROR_REF/>
  <ERROR_TITLE/>
  <ERROR_MESSAGE/>
</ERROR>
  <PROCESSING_PARAMETER_NAME/>
  <PROCESSING_PARAMETER_VALUE/>
</PROCESSING_PARAMETER>
</REFERRAL_DISCHARGE>
</ERROR_AND_WARNING_DETAILS>
</PRIMHD_ACK>
```

3. Future Structure

3.1. New XML Elements

We will collect and structure the supplementary consumer records in a similar fashion to the existing complex elements Collection Occasion, Activity and Classification. The referral discharge XML schema V2.3 will allow for unlimited Supplementary Consumer Record elements to be nested within the Referral Discharge element. Each will have its own ID which will be allocated by the mental health provider (organisation), as with Activity ID, Collection Occasion ID, and so forth, and a Collection Date element, identifying the date on which the associated values were captured by the mental health provider. There must be one and only one of each of the child nodes of ID, Collection Date, Wellness Plan, Accommodation, Employment Status, and Education Status inside the Supplementary Consumer Record element. The basic Referral Discharge XML document tree will look like this, noting that unlimited Supplementary Consumer Record elements with different Supplementary Consumer Record IDs and Collection Dates will be allowed to be nested within the Referral Discharge element.

```

<REFERRAL_DISCHARGE>
  <FILE_VERSION/>
  <REFERRAL_ID/>
  <SUBMITTING_ORG_ID/>
  <ORGANISATION_ID/>
  <EXTRACT_FROM_DATE_TIME/>
  <EXTRACTED_DATE_TIME/>
  <DELETED_FLAG/>
  <TEAM_CODE/>
  <EVENT_HCU_ID/>
  <SEX/>
  <DATE_OF_BIRTH/>
  <REFERRAL_FROM/>
  <REFERRAL_TO/>
  <REFERRAL_END_CODE/>
  <START_DATE_TIME/>
  <END_DATE_TIME/>
  <COLLECTION_OCCASION>
    [...]
  </COLLECTION_OCCASION>
  <ACTIVITY>
    [...]
  </ACTIVITY>
  <CLASSIFICATION>
    [...]
  </CLASSIFICATION>
  <SUPPLEMENTARY_CONSUMER_RECORD>
    <SUPPLEMENTARY_CONSUMER_RECORD_ID/>
    <COLLECTION_DATE/>
    <WELLNESS_PLAN/>
    <ACCOMMODATION/>
    <EMPLOYMENT_STATUS/>
    <EDUCATION_STATUS/>
  </SUPPLEMENTARY_CONSUMER_RECORD>
</REFERRAL_DISCHARGE>

```

The following table outlines the new XML elements, and the manner in which we propose to collect them.

Element	Number In Relation To Parent Element	Description
Supplementary Consumer Record	0..*	This is the parent element to contain the following six children. This element will be unbounded; an unlimited number of Supplementary Consumer Record elements will be permitted inside a Referral Discharge element, of which it will be a direct child.
Supplementary Consumer Record ID	1	An element whose text context will identify a Supplementary Consumer Record uniquely to the referral discharge record. This ID will be allocated by the mental health provider, or its software solution.
Collection Date	1	An element whose text context will be of the type xs:date and will identify the date on which the mental health services provider (or consumer) captured the Supplementary Consumer Record.
Wellness Plan	1	This element's text context will identify whether or not a wellness (relapse prevention) plan is in place for the service consumer. These are the codes and descriptions taken from the HISO code set standard: 1—Yes 2—No 7—Unknown
Accommodation	1	This element's text context will identify the consumer's present accommodation status. These are the codes and descriptions taken from the HISO code set standard: 1—Independent 2—Supported 3—Homeless
Employment Status	1	This element's text context will identify the consumer's employment status with effect from the Collection Date. These are the codes and descriptions taken from the HISO code set standard: 1—In paid employment for more than or equal to 30 hours a week 2—In paid employment from 1 to fewer than 30 hours per week 3—Not in paid employment less than 1 hour per week
Education and Training Status	1	This element's text context will identify whether the consumer is undertaking NZQA training on the Collection Date. These are the codes and descriptions taken from the HISO code set standard for this element: 1—Yes 2—No

We shall add the following elements to the Referral Discharge XML schema:

```
<xs:complexType name="SUPPLEMENTARY_CONSUMER_RECORDType">
  <xs:sequence>
    <xs:element name="SUPPLEMENTARY_CONSUMER_RECORD_ID" type="ID_20_Type"/>
    <xs:element name="COLLECTION_DATE" type="xs:date"/>
    <xs:element name="WELLNESS_PLAN" type="WELLNESS_PLANType"/>
    <xs:element name="ACCOMMODATION" type="ACCOMMODATIONType"/>
    <xs:element name="EMPLOYMENT_STATUS" type="EMPLOYMENT_STATUSType"/>
    <xs:element name="EDUCATION_STATUS" type="EDUCATION_STATUSType"/>
  </xs:sequence>
</xs:complexType>
<xs:simpleType name="WELLNESS_PLANType">
  <xs:restriction base="xs:string">
    <xs:enumeration value="1"/>
    <xs:enumeration value="2"/>
    <xs:enumeration value="7"/>
  </xs:restriction>
</xs:simpleType>
<xs:simpleType name="ACCOMMODATIONType">
  <xs:restriction base="xs:string">
    <xs:enumeration value="1"/>
    <xs:enumeration value="2"/>
    <xs:enumeration value="3"/>
  </xs:restriction>
</xs:simpleType>
<xs:simpleType name="EMPLOYMENT_STATUSType">
  <xs:restriction base="xs:string">
    <xs:enumeration value="1"/>
    <xs:enumeration value="2"/>
    <xs:enumeration value="3"/>
  </xs:restriction>
</xs:simpleType>
<xs:simpleType name="EDUCATION_STATUSType">
  <xs:restriction base="xs:string">
    <xs:enumeration value="1"/>
    <xs:enumeration value="2"/>
  </xs:restriction>
</xs:simpleType>
```

The SUPPLEMENTARY_CONSUMER_RECORD nodes themselves will be sequenced between CLASSIFICATION and PROCESSING_PARAMETER inside the REFERRAL_DISCHARGE element. Please see REFERRAL_DISCHARGE_v2_3.xsd for the full, updated Referral Discharge XML schema. A sample, completely fictitious Referral Discharge document with the proposed new elements may look like this:

```
<REFERRAL_DISCHARGE>
  [...]
  <COLLECTION_OCCASION>
    [...]
  </COLLECTION_OCCASION>
  <ACTIVITY>
    [...]
  </ACTIVITY>
  <CLASSIFICATION>
    [...]
  </CLASSIFICATION>
  <SUPPLEMENTARY_CONSUMER_RECORD>
    <SUPPLEMENTARY_CONSUMER_RECORD_ID>1</SUPPLEMENTARY_CONSUMER_RECORD_ID>
    <COLLECTION_DATE>2015-01-10</COLLECTION_DATE>
    <WELLNESS_PLAN>2</WELLNESS_PLAN>
    <ACCOMMODATION>3</ACCOMMODATION>
    <EMPLOYMENT_STATUS>3</EMPLOYMENT_STATUS>
    <EDUCATION_STATUS>2</EDUCATION_STATUS>
  </SUPPLEMENTARY_CONSUMER_RECORD>
  <SUPPLEMENTARY_CONSUMER_RECORD>
    <SUPPLEMENTARY_CONSUMER_RECORD_ID>2</SUPPLEMENTARY_CONSUMER_RECORD_ID>
    <COLLECTION_DATE>2015-02-11</COLLECTION_DATE>
    <WELLNESS_PLAN>2</WELLNESS_PLAN>
    <ACCOMMODATION>3</ACCOMMODATION>
    <EMPLOYMENT_STATUS>3</EMPLOYMENT_STATUS>
```

```

    <EDUCATION_STATUS>1</EDUCATION_STATUS>
  </SUPPLEMENTARY_CONSUMER_RECORD>
<SUPPLEMENTARY_CONSUMER_RECORD>
  <SUPPLEMENTARY_CONSUMER_RECORD_ID>3</SUPPLEMENTARY_CONSUMER_RECORD_ID>
  <COLLECTION_DATE>2015-03-12</COLLECTION_DATE>
  <WELLNESS_PLAN>2</WELLNESS_PLAN>
  <ACCOMMODATION_STATUS>3</ACCOMMODATION_STATUS>
  <EMPLOYMENT_STATUS>3</EMPLOYMENT_STATUS>
  <EDUCATION_STATUS>1</EDUCATION_STATUS>
</SUPPLEMENTARY_CONSUMER_RECORD>
<SUPPLEMENTARY_CONSUMER_RECORD>
  <SUPPLEMENTARY_CONSUMER_RECORD_ID>4</SUPPLEMENTARY_CONSUMER_RECORD_ID>
  <COLLECTION_DATE>2015-04-13</COLLECTION_DATE>
  <WELLNESS_PLAN>2</WELLNESS_PLAN>
  <ACCOMMODATION>3</ACCOMMODATION>
  <EMPLOYMENT_STATUS>3</EMPLOYMENT_STATUS>
  <EDUCATION_STATUS>1</EDUCATION_STATUS>
</SUPPLEMENTARY_CONSUMER_RECORD>
<SUPPLEMENTARY_CONSUMER_RECORD>
  <SUPPLEMENTARY_CONSUMER_RECORD_ID>5</SUPPLEMENTARY_CONSUMER_RECORD_ID>
  <COLLECTION_DATE>2015-05-14</COLLECTION_DATE>
  <WELLNESS_PLAN>1</WELLNESS_PLAN>
  <ACCOMMODATION>3</ACCOMMODATION>
  <EMPLOYMENT_STATUS>2</EMPLOYMENT_STATUS>
  <EDUCATION_STATUS>1</EDUCATION_STATUS>
</SUPPLEMENTARY_CONSUMER_RECORD>
<SUPPLEMENTARY_CONSUMER_RECORD>
  <SUPPLEMENTARY_CONSUMER_RECORD_ID>6</SUPPLEMENTARY_CONSUMER_RECORD_ID>
  <COLLECTION_DATE>2015-06-15</COLLECTION_DATE>
  <WELLNESS_PLAN>1</WELLNESS_PLAN>
  <ACCOMMODATION>2</ACCOMMODATION>
  <EMPLOYMENT_STATUS>2</EMPLOYMENT_STATUS>
  <EDUCATION_STATUS>2</EDUCATION_STATUS>
</SUPPLEMENTARY_CONSUMER_RECORD>
</REFERRAL_DISCHARGE>

```

3.2. Acknowledgement

Version 0.8 of the Acknowledgement XML document schema contains Supplementary Consumer Record elements that follow the rubric of other complex elements in the PRIMHD Acknowledgement XML document schema. Roughly, it will look something like this where the elements in red may appear an unlimited number of times in relation to their parents:

```

<PRIMHD_ACK>
  <DOCUMENT_TYPE/>
  <DOCUMENT_IDENTIFIER/>
  <STATUS/>
  <NUM_ERRORS/>
  <NUM_WARNINGS/>
  <TIME_STAMP/>
  <ERROR_AND_WARNING_DETAILS>
    <REFERRAL_DISCHARGE>
      <WARNING>
        [...]
      </WARNING>
      <ERROR>
        [...]
      </ERROR>
    <FILE_VERSION/>
    <REFERRAL_ID/>
    <SUBMITTING_ORG_ID/>
    <ORGANISATION_ID/>
    <EXTRACT_FROM_DATE_TIME/>
    <EXTRACTED_DATE_TIME/>
    <TEAM_CODE/>
    <EVENT_HCU_ID/>
    <SEX/>
    <DATE_OF_BIRTH/>
    <REFERRAL_FROM/>
    <START_DATE_TIME/>
    <COLLECTION_OCCASION>

```

```
[...]  
</COLLECTION_OCCASION>  
<ACTIVITY>  
  [...]  
</ACTIVITY>  
<CLASSIFICATION>  
  [...]  
</CLASSIFICATION>  
<SUPPLEMENTARY_CONSUMER_RECORD>  
  <WARNING>  
    <WARNING_REF/>  
    <WARNING_TITLE/>  
    <WARNING_MESSAGE/>  
  </WARNING>  
  <ERROR>  
    <ERROR_REF/>  
    <ERROR_TITLE/>  
    <ERROR_MESSAGE/>  
  </ERROR>  
  <SUPPLEMENTARY_CONSUMER_RECORD_ID/>  
  <COLLECTION_DATE/>  
  <WELLNESS_PLAN/>  
  <ACCOMMODATION/>  
  <EMPLOYMENT_STATUS/>  
  <EDUCATION_STATUS/>  
</SUPPLEMENTARY_CONSUMER_RECORD>  
<PROCESSING_PARAMETER>  
  [...]  
</PROCESSING_PARAMETER>  
</REFERRAL_DISCHARGE>  
</ERROR_AND_WARNING_DETAILS>  
</PRIMHD_ACK>
```


Appendix A – Document Control

A.1. Document Information

System name:	National Collections
File name:	Sector Notice Appendix.docx
Version:	0.5
Date:	9 October 2015
Prepared by:	Lee Gibson Systems Analyst
Document location:	X:\Workspaces\System Analysis\Projects and Releases\NCAMP 2016\PRIMHD\
Document owner:	Ron Wood Project Manager National Collections and Reporting

Document Revision History

Ver.	Date	Author	Description of changes
0.1	19/06/2015	Lee Gibson	Document generation
0.2	30/06/2015	Lee Gibson	Incorporated initial feedback received from Ron Wood, Tracy Worsley and Shusen Yi.
0.3	27/07/2015	Lee Gibson	Updated to incorporate discussion from 22 July workshop on the subject.
0.4	06/10/2015	Lee Gibson	Appendicised for change notice.
0.5	07/10/2015	Lee Gibson	Incorporates feedback received from Hilary Sharp

A.2. Associated Documents

Document Title Location	Ver.	Release Date
PRIMHD Data Set Standard (HISO 10023.2)	3.1	July 2014
PRIMHD Code Set Standard (HISO 10023.3)	3.1	July 2014

A.3. Document Contributors

Name	Role	Group
Lee Gibson	Systems Analyst	Information Group