

To: John Stribling

Director-General of Health,
Ministry of Health
PO Box 5013, Wellington
NEW ZEALAND
Page | 1

Ormat Ltd.

3 Harry Human Heights,
Meadowbank, Auckland
NEW ZEALAND
Tel : +64 21 476 844
E-mail: amarshakib@gmail.com

Year Return – Imported flavored Tobacco (2009)

Importer: Ormat Limited
Calendar Year: In respect of calendar year ends at 31 –
December – 2008
Tobacco Product Class: Flavored Molasses

Brands Information

Brand Name	Alfakher
Country of Origin	United Arab Emirates
Packing	250g
Tobacco Weight	20g
On average (Smoke)	25g or less of Molasses
On average (Smoke)	1.25mg or less of nicotine through water
Local whole sale price (2009)	\$31.00*
Recommended retailing price (2009)	\$35.00*

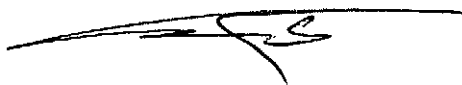
* Prices are subject to alteration

I (Amar Shakib) of 3 Harry Human Heights, Auckland, New Zealand, Director of Ormat Limited, certify the information contained in this return is correct for the purposes of complying the Smoke-free Environment Regulation 1999.

Dated 27th of January, 2010

Signed

(Amar Shakib – Director)



To: John Stribling

Director-General of Health,
Ministry of Health
PO Box 5013, Wellington
NEW ZEALAND
Page | 2

Ormat Ltd.

3 Harry Human Heights,
Meadowbank, Auckland
NEW ZEALAND
Tel : +64 21 476 844
E-mail: amarshakib@gmail.com

Details of imported Molasses for New Zealand domestic market sale

(For calendar year ends at 31- Dec – 2010)

NZ Custom Entry Date	NZ Custom Entry No.	Imported Carton
8 June 2009	83877876	55
22 Oct 2009	97017782	220

Total quantities imported for New Zealand
Domestic Market (Sale 2009)

290 Carton

I (Amar Shakib) of 3 Harry Human Heights, Meadowbank, Auckland , New Zealand, Director of Ormat Limited. Certify that the information contained in this return is correct for the purposes of complying the Smoke-free Environments Regulations 1999.

Dated at 27th of January 2010

Signed



To: John Stribling

Director-General of Health,
Ministry of Health
PO Box 5013, Wellington
NEW ZEALAND
Page | 3

Ormat Ltd.

3 Harry Human Heights,
Meadowbank, Auckland
NEW ZEALAND
Tel : +64 21 476 844
E-mail: amarshakib@gmail.com

Price List – New Zealand Domestic Market

(Effective date: 01-April-2009)

Molasses Brand	Alfakher – U.A.E Origin
Packing	24 packs * 250g / Carton
Whole Sale Price	\$31 per pack Or \$644 per Carton
Recommended Retailing Price	\$35 per pack

Remarks:

1. Prices above are New Zealand Dollars and GST included.
2. Free Delivery within Auckland City
3. The retailing prices specified herein are only recommendation retailer has no obligation to adhere with.
4. Above prices are quoted subject to alteration.

Health Warning

Smoking is the main cause of lung cancer, lung diseases, and of heart and arteries diseases.

I (Amar Shakib) of 3 Harry Human Heights, Meadowbank, Auckland , New Zealand, Director of Ormat Limited. Certify that the information contained in this return is correct for the purposes of complying the Smoke-free Environments Regulations 1999.

Dated at 27th of January 2010

Signed





Certificate EG06/00558 QA

The management system of

AL FAKHER TOBACCO TRADING Co. L.L.C.



AJMAN, U.A.E.

has been assessed and certified as meeting the requirements of

ISO 9001:2000

Exclusion (7.3)

For the following activities

Manufacturing, packaging and distribution of tobacco

Further clarifications regarding the scope of this certificate and the applicability of ISO 9001:2000 requirements may be obtained by consulting the organization

This certificate is valid from 26 April 2006 until 25 April 2009
Issue 1. Certified since 26 April 2006

Authorised by



SGS United Kingdom Ltd. Systems & Services Certification
Rossmore Business Park, Ellesmere Port, Cheshire, CH65 3EN UK
t +44 (0)151 350-8866 f +44 (0)151 350-6600 www.sgs.com





MEDICINAL PLANT HERBARIUM

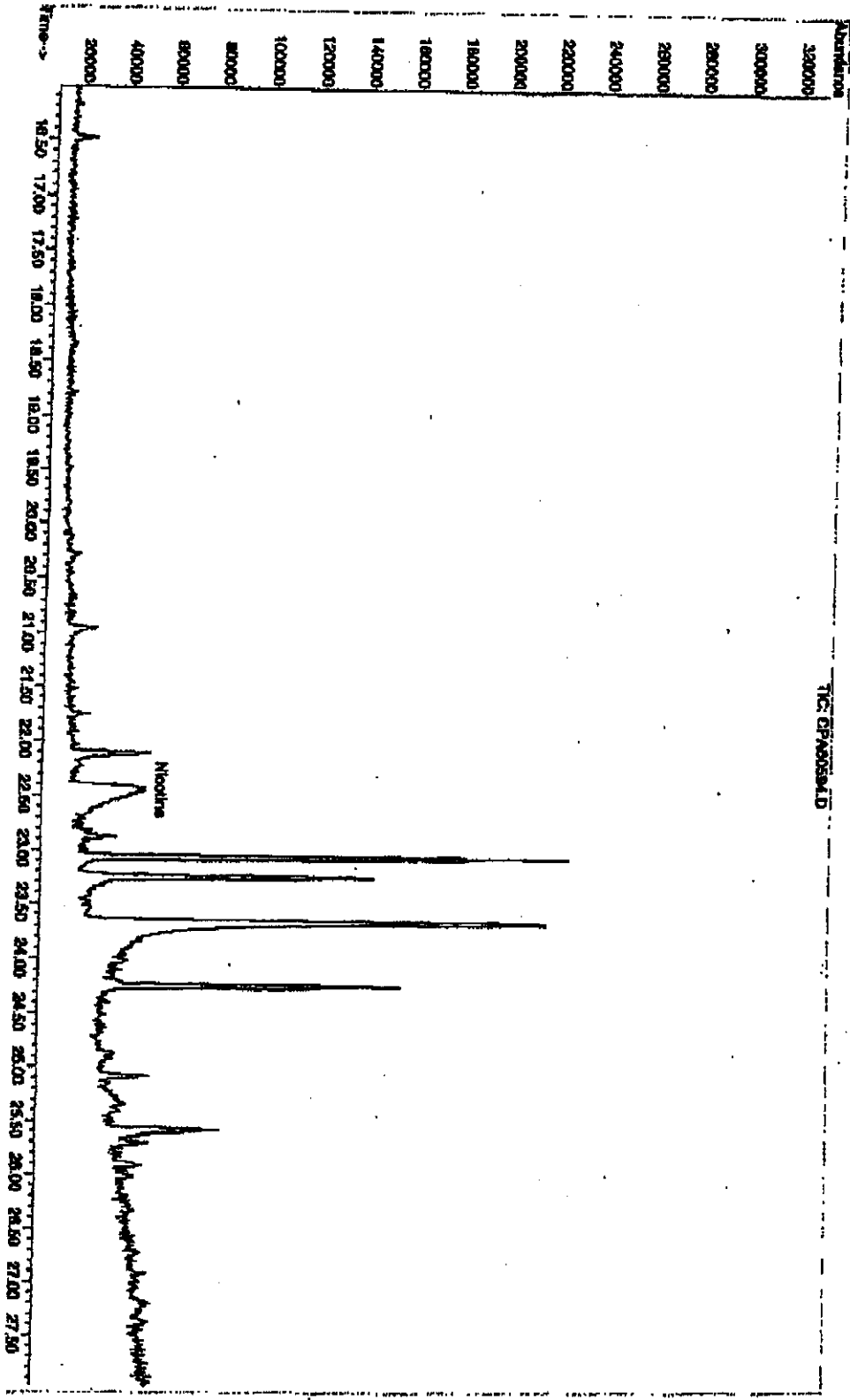
Medicinal Plant Identification and Raw Materials Authentication

CERTIFICATE OF ANALYSIS

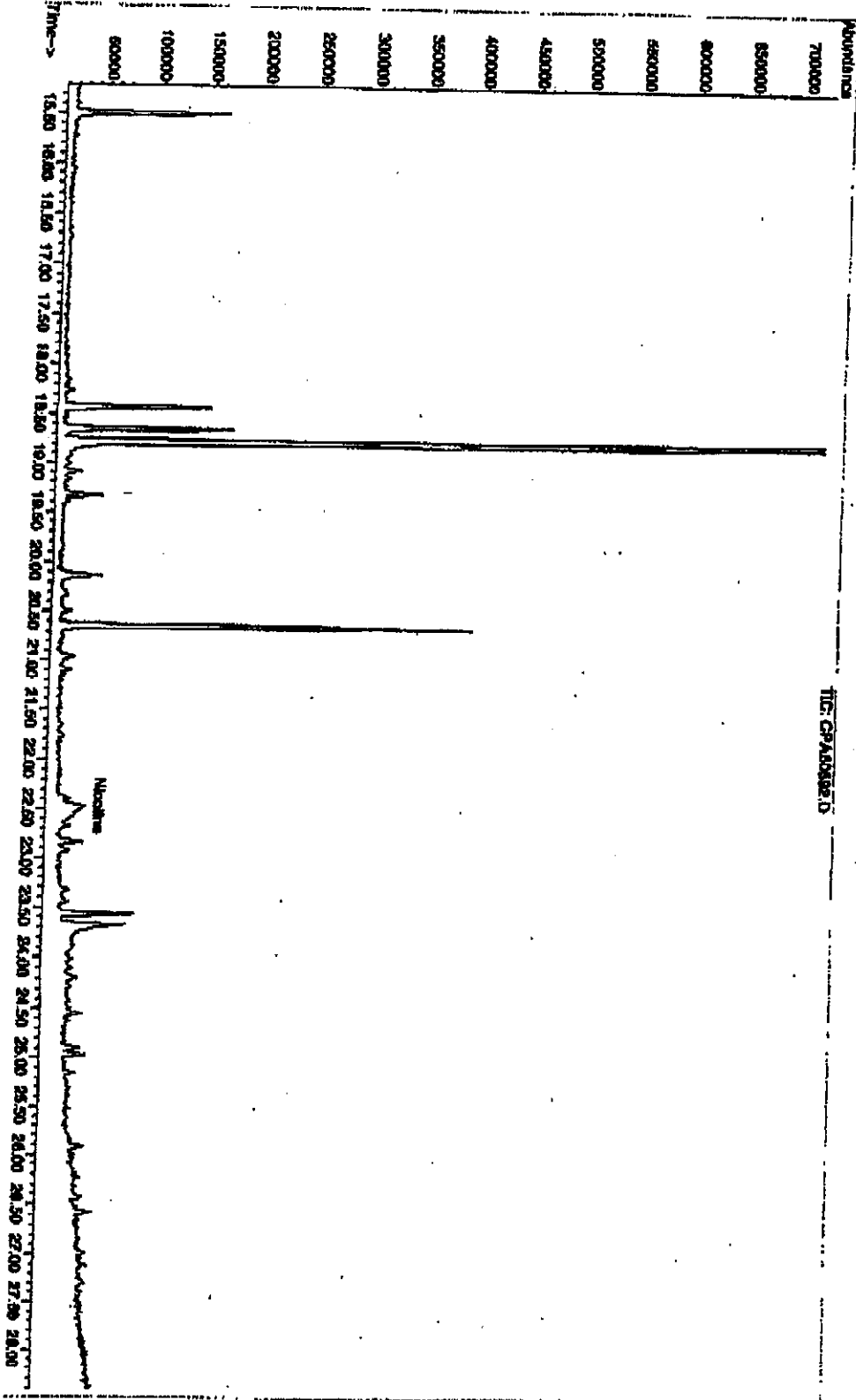
Sample: Al Fakher Mint Flavour	Herbarium Ref:
Sample type: Molasses tobacco	Supplier Ref:
Supplier: Australian Customs Service	
Date of Certification: 30 July 2006	Laboratory Ref: CPA060592
Identification based on: Macro- and microscopic examination, including comparison with authenticated tobacco leaf reference material (NCM-D-04-040).	
Results of analysis: The sample CPA060592 consists of tobacco leaf.	
 Hans Wohlmut Pharmacognosist	

P. O. Box 157, Lismore, Lismore NSW 2480, Australia
Ph: +61-2-6620 3159 Fax: +61-2-6620 3307 Email: hwohlmut@scu.edu.au

File : N:\GC-MSDATA\DATA\060720A\CPN60594.D
Operator : CH
Acquired : 20 Jul 2006 20:26 using AcqMethod MSQCIDE
Instrument : Instrumen
Sample Name: Alfalther Grapes Flavour
Misc Info :
Vial Number: 99



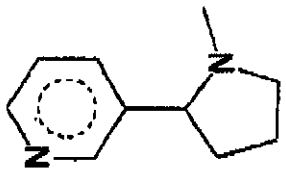
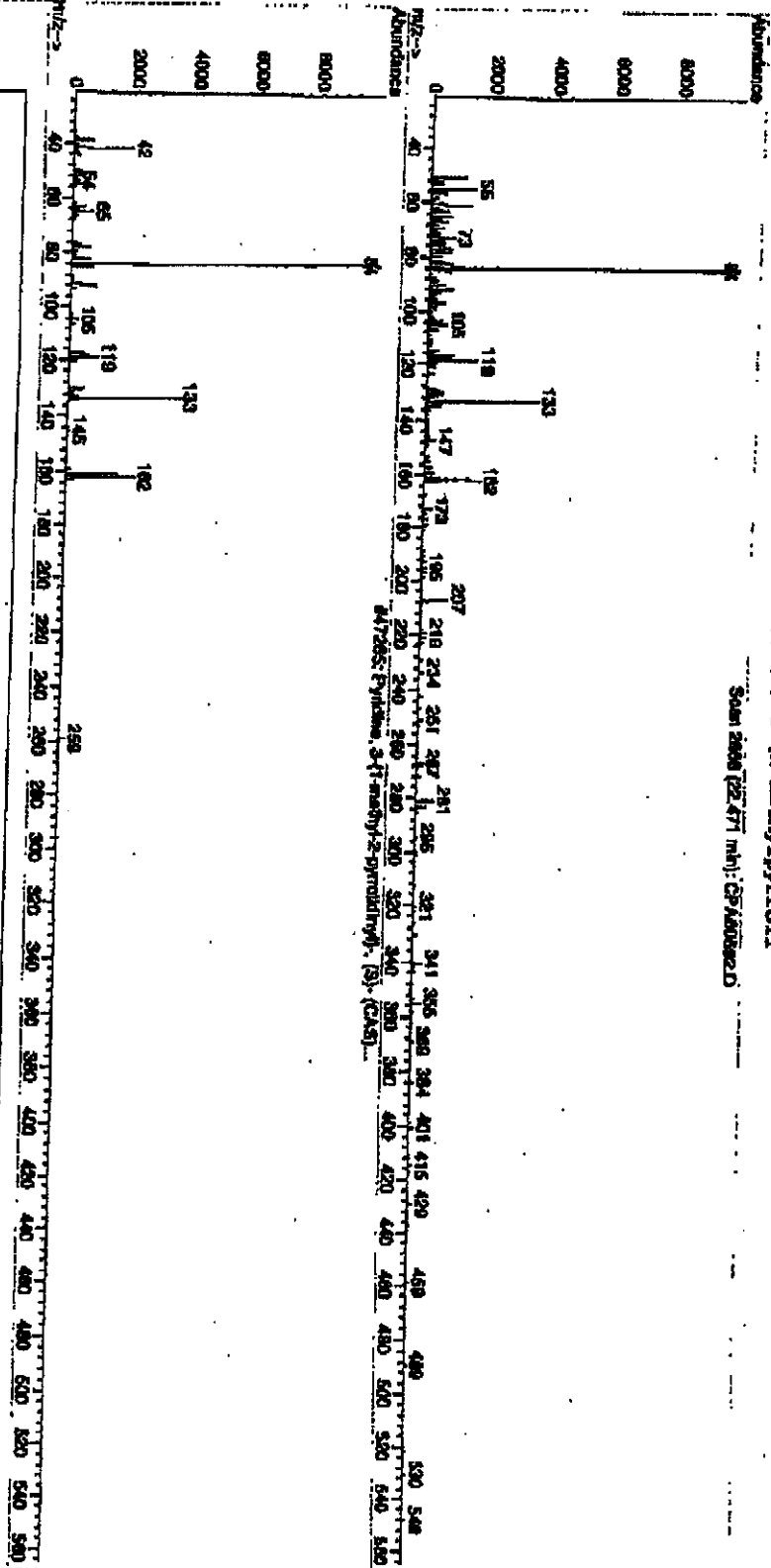
File : D:\GC-HSDATA\DATA\060720A\CPA60592.D
Operator : CW
Acquired : 20 Jul 2006 18:43 using AcqMethod MSQC10R
Instrument : Instrument
Sample Name : Alfater Mint Flavours
Misc Info :
Vial Number: 97



Literary Searched : C:\DNM\ASR\Wiley\275.1
Quality : 81
ID : 81

Pyridine, 3-(1-methyl-2-pyrroliidnyl)-, (S)- (CAS) \$
Flux Mavg \$ L-Nicotine \$ (-)-Nicotine \$ \$
Nicotin \$ S-(-)-Nicotine \$ (-)-3-(N-methyl)pyrrolid
\$
\$ 1-Methyl-2-(3-pyridyl)-pyrrolidine
\$ 3-(N-methyl)pyrrolidino)pyridine \$

Scan 2888 (2.471 min): CPAS002820



Library Searched : C:\DATABAS\wiley275.1
Quality : 95
ID : 95

- \$ Pyridine, 3-(1-methyl-2-pyrrolidinyl)-, (S)- (CAS) \$ Nicotine \$ 1-METHYL-2-(3-PYRIDYL)-PYRROLIDINE
- \$ Fluor Kang \$ L-Nicotine \$ (-)-Nicotine \$ S II All Insecticide \$ 3-(1-Methylpyrrolidino)pyridine \$
- \$ Nicotin \$ S (-)-Nicotine \$ (-)-3-(1-Methylpyrrolidino)pyridine

Scan 886 (22.454 min): CPAN006A.D

