



MINISTRY OF  
HEALTH

MANATŪ HAUORA

# Disability Support Services

## Introducing the New Model for supporting disabled people



17 December 2010

## Who we are

**Jenny Moor** – Development Manager. Disability Support Services, Ministry of Health

**Anne O'Connell** – Group Manager. Disability Support Services, Ministry of Health

and other Ministry staff involved in aspects of the work

**Ruth Gerzon & Lawrence Chok** – Inclusion Aotearoa

## Why do we need a new way?

Disabled people want  
  
a good life and  
  
more choice and control  
over support they receive



In 2006 MPs set up a committee to talk to disabled people, families and service providers

Ministry of Health have consumer meetings – flexibility, support for families, workforce and access to information highlighted – DSS strategic plan and work programme formed from this

The Committee's report is given to Parliament

Ministry of Health research good practices here and overseas, including Local Area Coordination

New Model for supporting disabled people developed

## What is different about the new model?

### OLD WAY

Someone else  
makes decisions  
about what support  
you get and when  
you get it

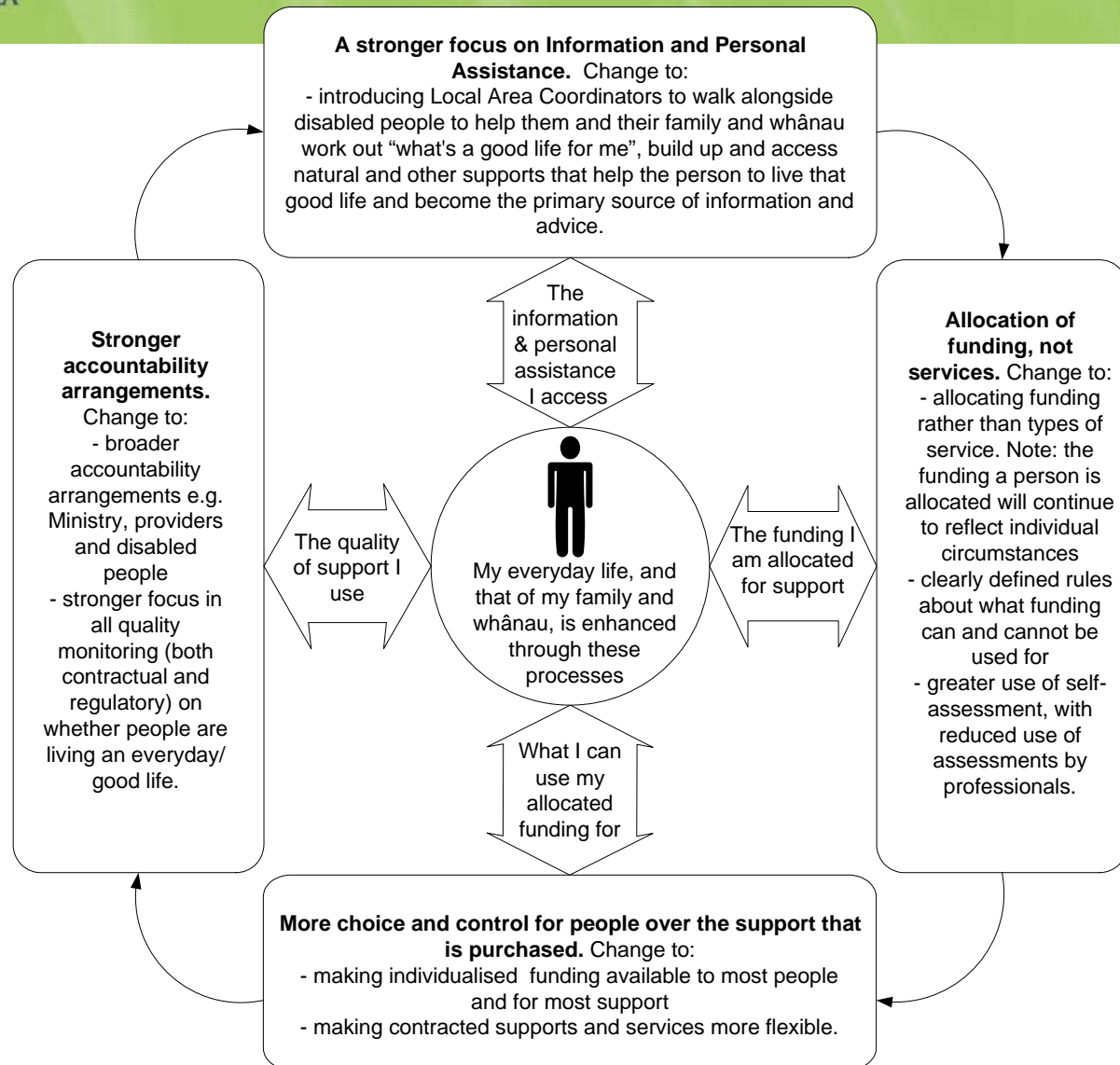
### NEW WAY

With support,  
**you** decide  
what's important  
to you to have a  
good life

# Disability Support Services

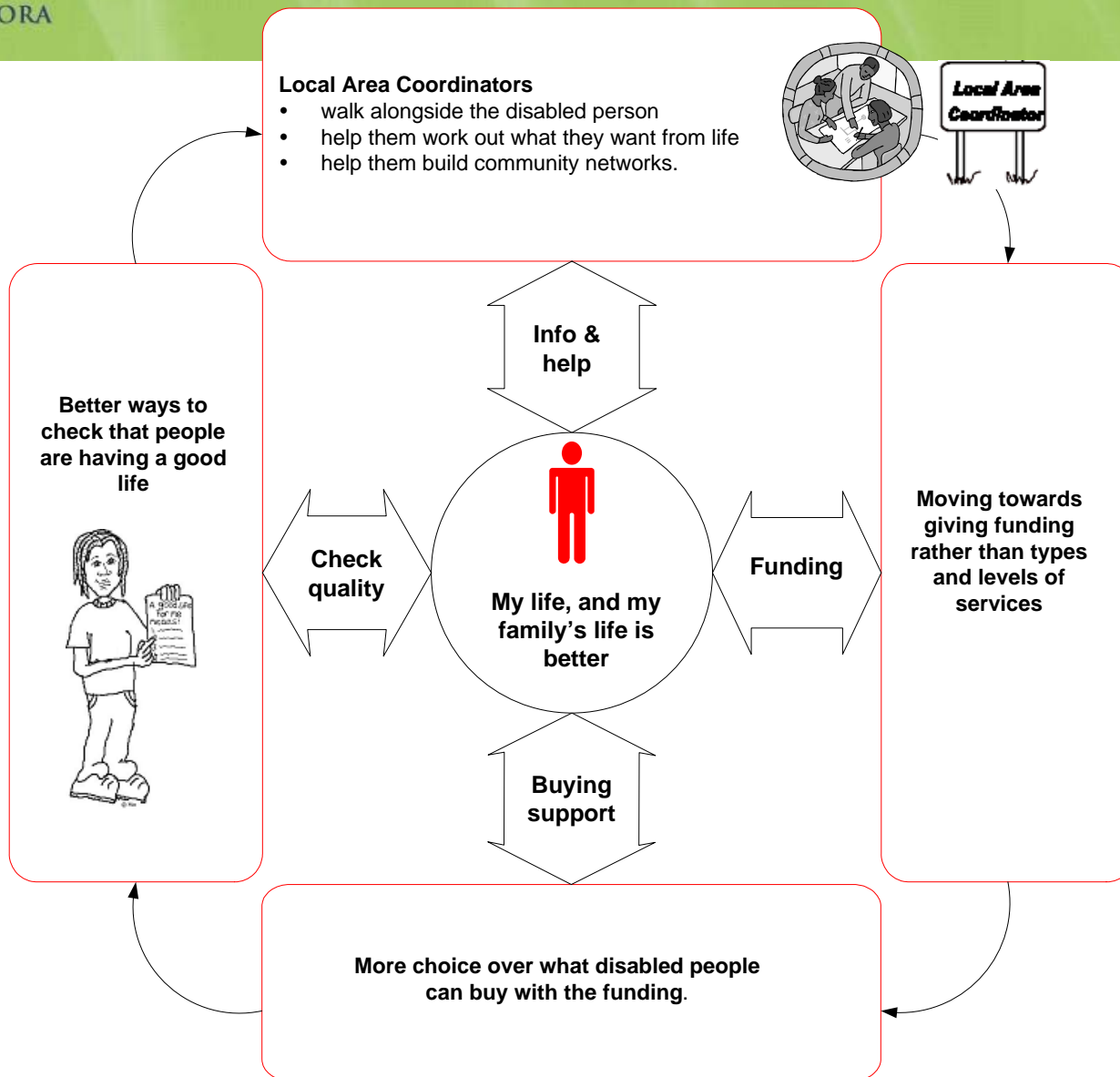
## The New Model

This is the model Cabinet approved



# Disability Support Services

**The New Model -**  
another  
version in  
plain language





## Local Area Coordination

The most visible part of the new model in the demonstration will be  
Local Area Coordination

### How does Local Area Coordination work?

A local area coordinator (LAC) will help you :

- get information
- work out how you want to live
- build relationships with people and organisations in your community or town
- work with the community to encourage them to include disabled people

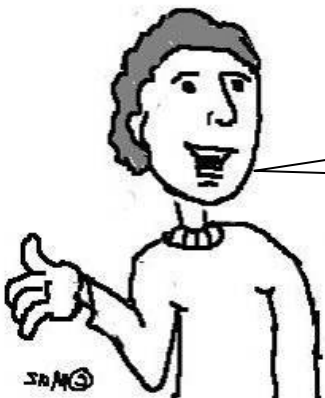




## What else is the new model about?

**Funding, not services** – allocate dollar value rather than type of service, self assessment

**What you can use the funding for** – expanding IF, increasing flexibility



**OK for me,  
but does it  
work for you  
too?**



**Accountability** – for everyone – Ministry, providers, service users, focus on quality and having a good life

## What is Individualised Funding?

Individualised Funding (IF) is a way of paying for support services

### What can you do with IF?

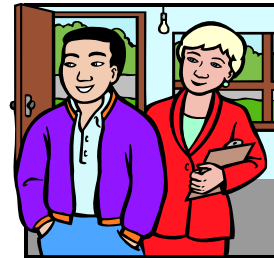
You can choose:

**who** comes into your home

**when** they come

**what** they do

**how** much they get paid (provided it's at least the minimum wage)



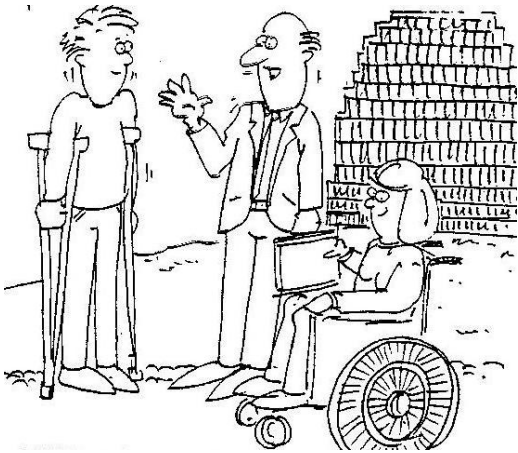
## Demonstrating the New Model



Western Bay of Plenty/Tauranga has been chosen as the first place to test out some elements of the New Model

Inclusion Aotearoa are supporting the Ministry of Health with this Demonstration project

## Community Engagement



We want to work closely with the community to share ideas, and to refine and evaluate the model

Inclusion Aotearoa will be setting up a local working group in the new year to work with them and the Ministry of Health to decide what will work here



## For further information:

### Inclusion Aotearoa

Web site: <http://inclusionaotearoa.co.nz>

Phone: (07) 3124191

Email: [inclusionaotearoa@gmail.co.nz](mailto:inclusionaotearoa@gmail.co.nz)

or write to P O Box 3017, Ohope, Whakatane

### Ministry of Health Disability Support Services

New Model project page:

<http://www.moh.govt.nz/moh.nsf/indexmh/disability-keyprojects-model>