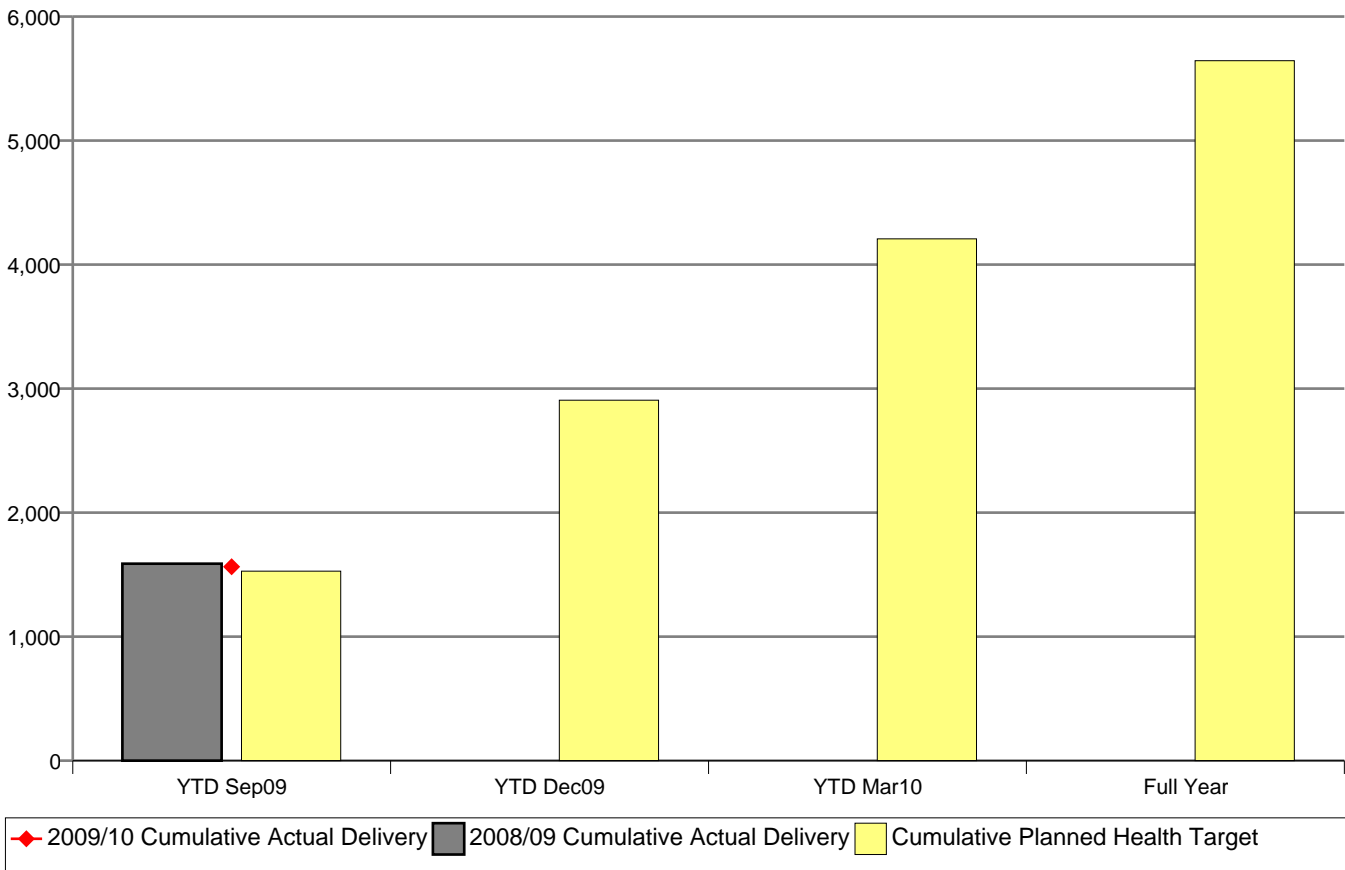


**2009/10 Improved Access to Elective Surgery
Health Target Plan and Delivery**

011 Northland DHB

	YTD Sep09	YTD Dec09	YTD Mar10	Full Year
Planned Health Target	1,529	2,907	4,208	5,645
Actual Discharge Delivery	1,564			
Plan to Actual Variance	35			
% Achieved	102 %			
Health Target Achievement Level	Achieved			

Equitable Share
5,873



This report measures DHBs delivery against the Improved Access to Elective Surgery Health Target. Figures are expressed by DHB of Domicile. The Health Target includes elective discharges in casemix funded surgical purchase units (excluding dental and cardiology).

Health Target Achievement Level
Outstanding - DHB delivers at least 5% more elective surgical discharges than agreed target
Achieved - DHB delivers their agreed elective surgical discharge target
Partially Achieved - DHB delivers less than their agreed elective surgical target but submits an approved report and plan
Not Achieved - DHB delivers less than agreed target and either does not submit a report or the report is not approved

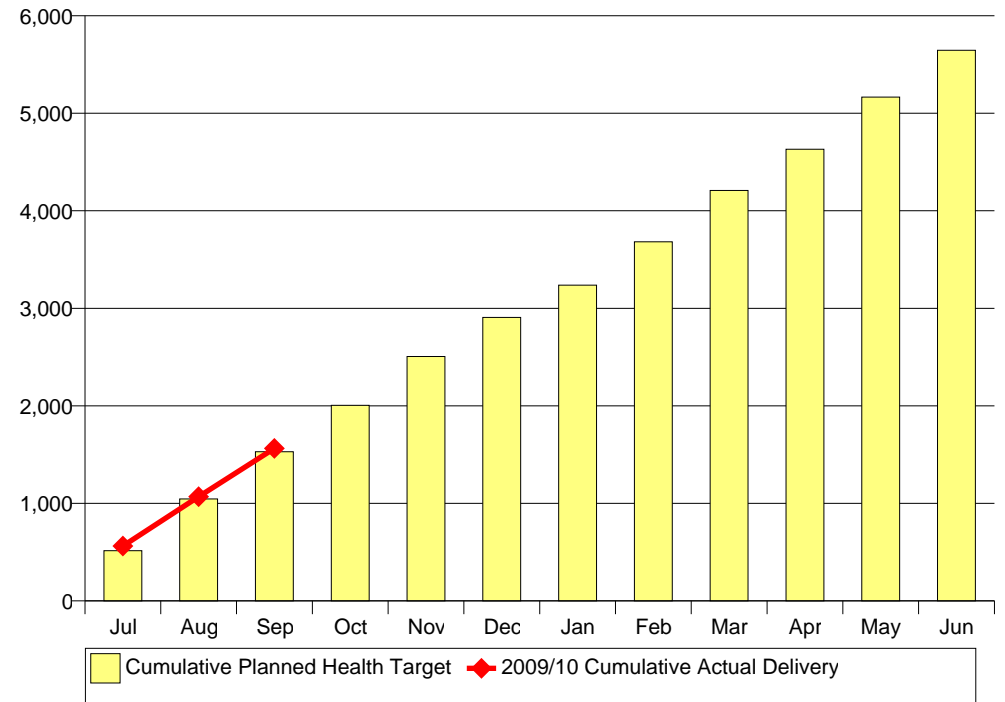
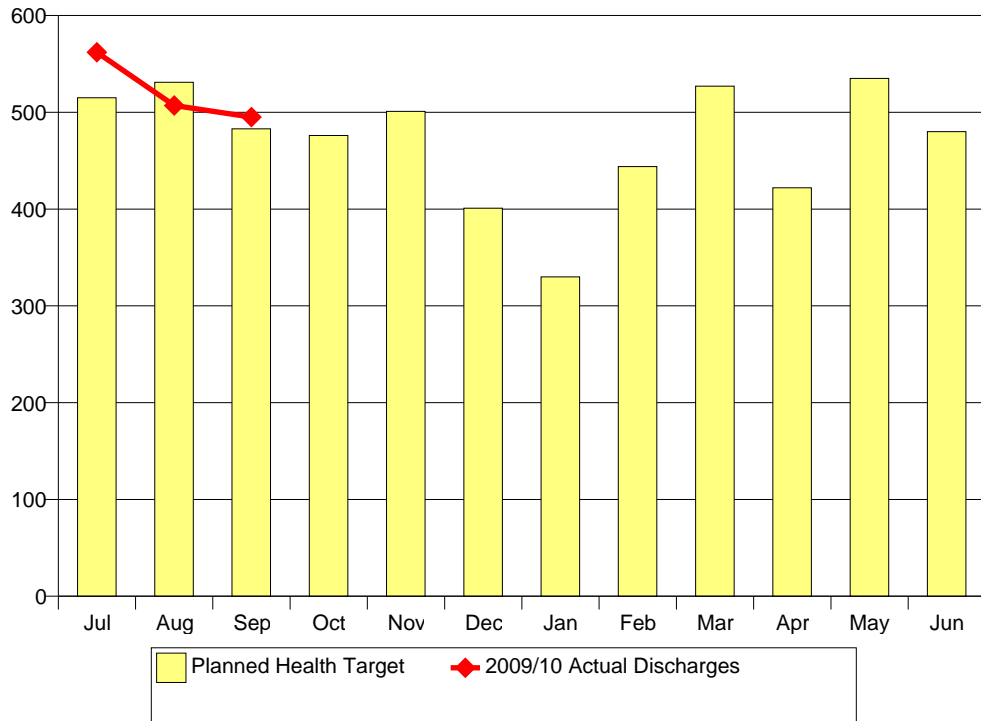
200910 Improved Access to Elective Surgery Health Target -Northland.rep

**2009/10 Improved Access to Elective Surgery
Health Target Delivery by Month**

Figures expressed by DHB of Domicile
Publicly funded events only
Surgical purchase units only
Elective admissions only

011 Northland DHB

	Jul	Aug	Sep	Oct	Nov	Dec	Jan	Feb	Mar	Apr	May	Jun	Total	YTD
Planned Health Target	515	531	483	476	501	401	330	444	527	422	535	480	5,645	1,529
Actual Discharge Delivery	562	507	495											1,564
Plan to Actual Variance	47	-24	12											35
% Achieved	109 %	95 %	102 %											102 %



**2009/10 Improved Access to Elective Surgery
Year to Date Discharge IDF**

Figures expressed by DHB of Domicile
Publicly funded events only
Surgical purchase units only
Elective admissions only

011 Northland DHB

	1011	1021	1022	1023	2031	3081	4121	
	Northland DHB	Waitemata DHB	Auckland DHB	Counties Manukau DHB	Waikato DHB	MidCentral DHB	Canterbury DHB	Sum:
S00.01 General Surgery - Inpatient Services (DRGs)	522	1	14	1				538
S15.01 Cardiothoracic - Inpatient Services (DRGs)			21					21
S25.01 Ear Nose and Throat - Inpatient Services (DRGs)	238		12	2			1	253
S30.01 Gynaecology - Inpatient Services (DRGs)	123	1	7	2				133
S35.01 Neurosurgery - Inpatient Services (DRGs)			11					11
S40.01 Ophthalmology - Inpatient Services (DRGs)	190		24					214
S45.01 Orthopaedics - Inpatient Services (DRGs)	203	1	17	3				224
S55.01 Paediatric Surgical Services (DRGs)			18					18
S60.01 Plastic & Burns - Inpatient Services (DRGs)	25			7				32
S70.01 Urology - Inpatient Services (DRGs)	102	2	1					105
S75.01 Vascular Surgery - Inpatient Services (DRGs)			15					15
Sum:	1,403	5	140	15			1	1,564