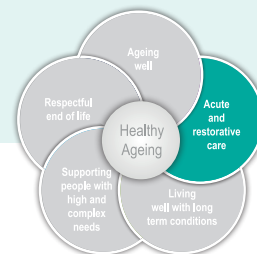


Healthy Ageing Strategy

Priority actions for implementation 2021–2022



ACUTE AND RESTORATIVE CARE

Ngātuāhuatanga manaaki, whakaora i te hunga māuiui

5. Reduce inappropriate acute admissions and improve assessment processes.

5a Enhance hospital avoidance and early supported discharge services by improving integration across primary care and older persons' services.

Implementing this action involves:

- continuing with current initiatives
- sharing outcome data across District Health Boards (DHBs) and primary health organisations (PHOs)
- focusing on what success in this area looks like and building on learnings across the sector
- aligning with work on frailty in other outcome areas
- using System Level Measures for system improvement.

LEADS: Accident Compensation Corporation (ACC) and DHBs

KEY PARTNERS: emergency response providers, aged residential care providers, Needs Assessment and Service Coordination (NASC), Home and Community Support Services (HCSS) providers

6. Prevent unnecessary acute hospitalisations and emergency department attendances.

6b Use data to identify older people at risk of falls and fractures.

LEADS: ACC and DHBs

KEY PARTNERS: Ministry of Health, Health Quality & Safety Commission

7. Support rehabilitation closer to home.

7a Enhance hospital avoidance and early supported discharge services by improving integration across primary care and older people's services via:

- rehabilitation partnerships with primary health care, allied health, community nurses, pharmacists, aged care providers, home support providers, families and whānau
- home-based and community-based models that support ongoing rehabilitation and restoration of older people
- facilitating staff working in rehabilitation to collaborate across workforce groups and work to the top of their scope.

LEAD: ACC

KEY PARTNERS: DHBs, aged residential care, HCSS, primary care, older people and carers