



SITREP 04

NATIONAL MEASLES OUTBREAK 2019

Issued: **1500 hrs, 28 AUGUST 2019**

IN CONFIDENCE

New information in red text

All information is current as of **28 August 2019**

Situation

1. From 1 January 2019 to **28 August 2019** there have been **849** confirmed cases of measles notified across New Zealand (*Appendix 1*).
2. There is currently a significant measles outbreak in Auckland which commenced in March 2019. As at **28 August 2019**, there have been **703** confirmed cases of measles in this region – **475** of which have occurred in Counties Manukau District Health Board (CMDHB) (*Appendix 2*).
3. Laboratory analysis of measles cases shows that the outbreak in Auckland is actually several outbreaks caused by several different genotypes of the virus.
4. The Auckland outbreaks began in West Auckland but are now mainly occurring in South Auckland, Counties Manukau. In South Auckland, the cases have been mainly in the 0–4 and 20–29 year age groups and predominately in the Pacific population.
5. **There have been 21 cases of measles in the Auckland DHB area in the last two days (as at 28 August 2019).**
6. Fifty percent of cases have been hospitalised. This proportion is higher than previous New Zealand outbreaks where approximately 30 percent have been hospitalised. There are no clear reasons to account for this increase in hospitalisation.
7. The majority of cases have been in unvaccinated people or in those who don't know their vaccination status.
8. **Auckland Regional Public Health Service have indicated that they intend to move into surveillance mode.**
9. Public Health Units outside of Auckland are being encouraged to manage measles cases and their contacts as per protocol, with isolation, contact tracing and quarantine to stop the spread of disease. Cases outside of Auckland are all currently linked to travel to or from the Metropolitan Auckland area.
10. Currently there are no issues or concerns with vaccine supply with 150,000 doses available in the National Store.
11. **Since February 2019, 66,630 doses of the MMR vaccine have been distributed in the Auckland region.**
12. **21,980 of these dose are the MMRII brand of vaccine. This brand was ring-fenced for distribution in Auckland only from June 2019. An earlier version of this report stated that 17,020 doses were distributed from February 2019 in Auckland. This was the number of**

MMR11 doses distributed at the time of the report. An additional 44650 doses of Priorix vaccine were also distributed.

13. Based on the National Immunisation Register, 47,398 doses of the MMR vaccine have been administered in the Auckland region from 1 February 2019 to 23 August 2019. This is an increase of 60% compared to the same time period in 2018.
14. MMR vaccine uptake has increased by 24% in Pacific people in the Auckland region compared to the same time period in 2018.
15. MMR vaccine uptake has increased by 42% in Māori in the Auckland region compared to the same time period in 2018.
16. MMR vaccine uptake has increased by 108% in New Zealand Europeans in the Auckland region compared to the same time period in 2018.
17. There have been no deaths associated with this outbreak.

Key Actions

Auckland Region District Health Boards and Public Health Unit

18. The Auckland region have put in place a number of strategies to increase the population immunity against measles:
 - lowering the age of the first MMR vaccine in the Auckland region from age 15 months to 12 months
 - active recall of children who have not been vaccinated
 - opportunistic vaccination of older children and young adults when attending primary care
 - using outreach services to contact 'hard to reach' children
 - opportunistic vaccination at large medical centres and after hours clinics in Counties Manukau
 - public messaging on the outbreak about who is at risk and how to get vaccinated.
19. In response to the rising numbers of measles cases in Auckland, particularly in young Pacific populations in Counties Manukau, the Ministry has worked closely with CMDHB and ARPHS to finalise and implement a vaccination programme proposal.
20. The CMDHB proposal is aimed at improving the immunity to measles of the population in the Counties Manukau area. This proposal includes funding an additional five vaccinator nurses to deliver outreach services and opportunistic vaccination in Middlemore hospital. The Ministry has agreed to fund these nurses, a total of \$285,000.
21. A condition of this funding will be that CMDHB will provide reports to the Ministry detailing the targets and the evaluation of this campaign. **The targets will be provided to CMDHB in a letter this week.**
22. **Data on outreach vaccination has been provided by CMDHB (Appendix 3).**

Ministry of Health

23. The Ministry of Health has implemented a Measles Project Team to manage the ongoing activities in response to this outbreak.
24. The Ministry are working with ESR to align reporting and messaging of national measles cases in the Measles Weekly Report.
25. The Ministry will be convening a meeting with an expert advisory group on 10 September 2019 to discuss the options on the best way to improve immunity across the New Zealand population.
26. The following options are being considered, aligned with recent advice from our National Verification Committee, initial review of international evidence and previous approaches suggested for improving measles immunity in New Zealand:
 - improving the delivery of all routine childhood MMR immunisations to be on time i.e. given at the time they are due
 - bringing the first MMR forward to 12 months nationwide and the second MMR forward to 15 months
 - supplementary immunisation activities to address the known measles immunity gap (~15 year olds to ~29 year olds)
 - traditional and social media communications campaign targeting key communities and health professionals in support of agreed approaches, this should include targeting travellers into and out of New Zealand.
27. Vaccine availability, impact on existing services and cost implications will be taken into consideration for all options.
28. Although the expert advisory group will be considering the introduction of a 12 month visit for the earlier administration of the first MMR, the Ministry has already commenced conversations on how this can be implemented between teams within the Ministry. The Ministry will also be socialising the introduction of a 12 month old immunisation visit with key primary care players to ensure there is support for this from the sector.
29. The initial notification to the WHO of a measles outbreak centred on the Canterbury region was sent on 15 March 2019. An updated notification including the situation in Auckland and other regions was sent 22 August 2019.
30. The Ministry, CMDHB and ARPHS are working collaboratively to ensure public information management, agency communication and resource management activities are well coordinated.
31. The Ministry will receive reports from CMDHB on Monday, Wednesday and Friday of each week detailing their actions. The Ministry will receive reports from CMDHB on Monday, Wednesday and Friday of each week detailing their actions. ARPHS will report to the Ministry on a daily basis with the number of cases in region, and nationally, respectively.

Public Information Management / Media

32. The Ministry website has been updated with a call-to-action stating “There are currently outbreaks of measles in New Zealand. Immunisation is your best protection against measles and the MMR vaccine is available free from your GP. Make sure you and your whanau are protected - if you are under 50 years and have never had a measles vaccine get vaccinated today.”

33. A draft press release has been produced for the Minister on the funding provided to CMDHB to support their outreach activities. **This was released on 28 August.**
34. The Ministry has updated its advice to primary care providers that they should consider vaccinating children from 12 months of age if they are travelling to Auckland.
35. A Health Advisory **was released on 27 August** with information for those travelling to Auckland. The advisory **contained** the advice that infants who will be travelling to Auckland should receive an MMR vaccine at 12 months, and this should be done 2 weeks prior to travel.
36. A press release will be developed to go alongside this Health Advisory.
37. The Public Service Association have requested the Ministry of Social Development provide advice on measles to front line Work and Income staff. Draft advice **has been** produced by the Ministry for this purpose **and went live in MSD offices on 28 August.**
38. **A copy of the National Health Advisory (sent 27 August 2019) has been forwarded to organisations responsible for the planning and management of sporting tournaments due to take place across New Zealand in September and December 2019. These events included New Secondary Schools Sports tournament week (1 – 8 September), Anchor Intermediate Schools (AIMS) Games (8 – 12 September), New Zealand National Age Group Tournament (December).**

Next situation report

39. The next situation report will be via email at **1500** hrs on **Friday 30** August 2019.

Prepared by: Tara Swadi, Intelligence

Approved by: Sarah Reader, Response Manager

Appendix 1: Cumulative tally of measles cases across New Zealand by DHB

DHB	Cumulative Cases - 1 January 2019 to 28 August 2019
Northland	25
Waitemata	128
Auckland	97
Counties Manukau	475
Waikato	18
Lakes	6
Bay of Plenty	27
Tairāwhiti	0
Taranaki	4
Hawke's Bay	3
Whanganui	0
MidCentral	1
Hutt Valley	7
Capital and Coast	12
Wairarapa	1
Nelson Marlborough	0
West Coast	0
Canterbury	41
South Canterbury	1
Southern	3
Total	849

Appendix 2

Figure 1. Cases of measles to 28 August and percent increase in cases per day in the Auckland region

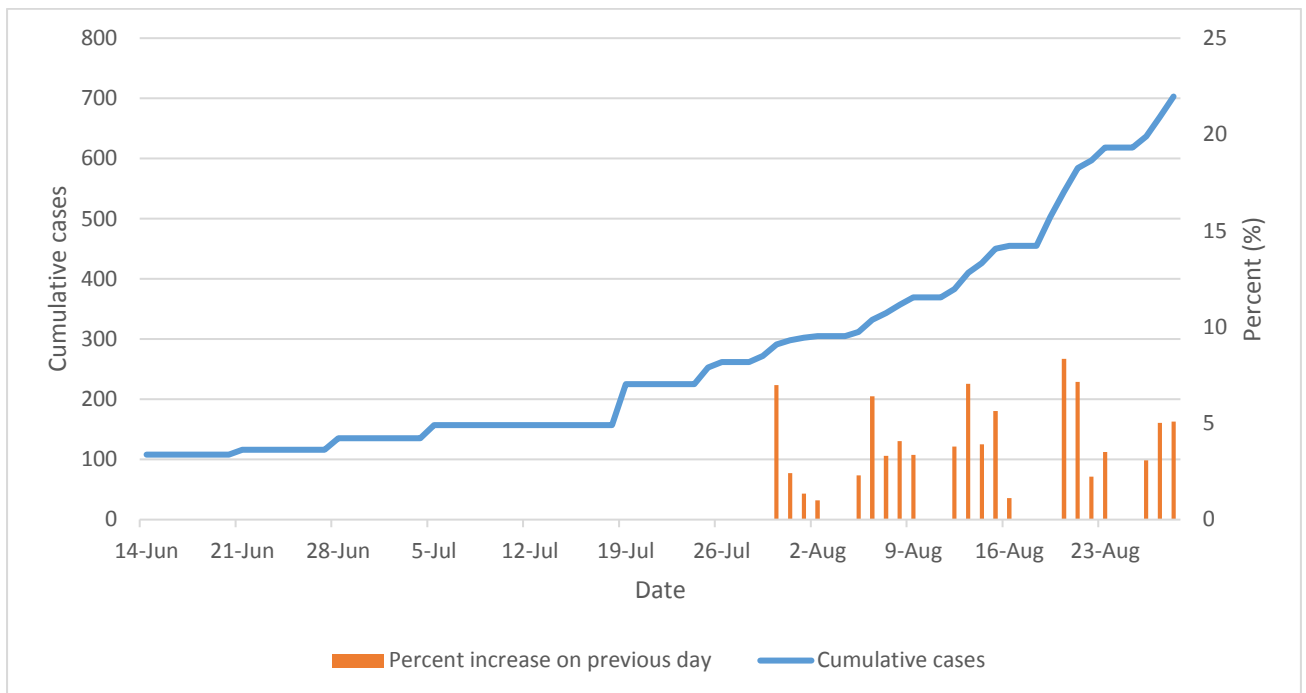


Figure 2. Exponential modelling of cases in Auckland per week up to 7 September

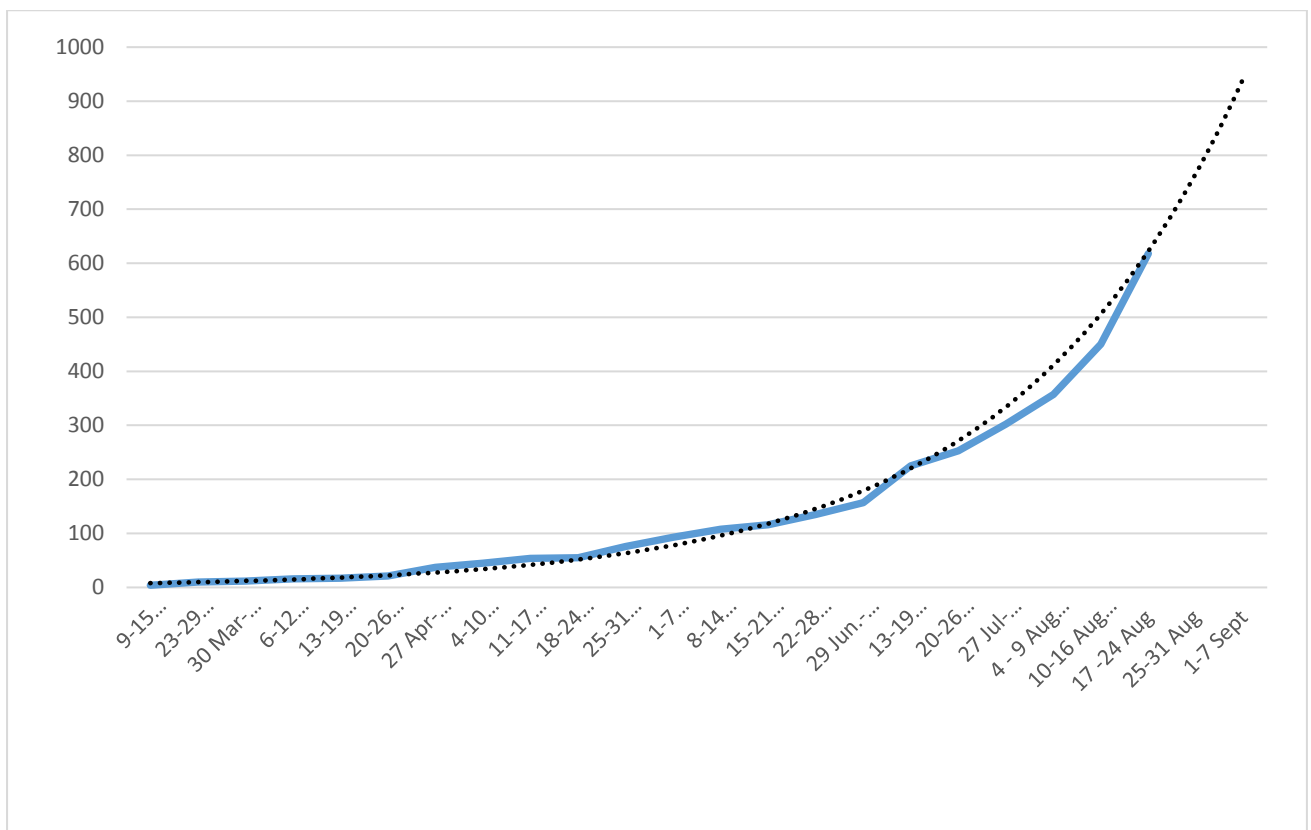


Figure 3. Mathematical modelling of measles outbreak in Auckland (current and expected)

NOTE: The week beginning 26 August is week 28 of this modelling.

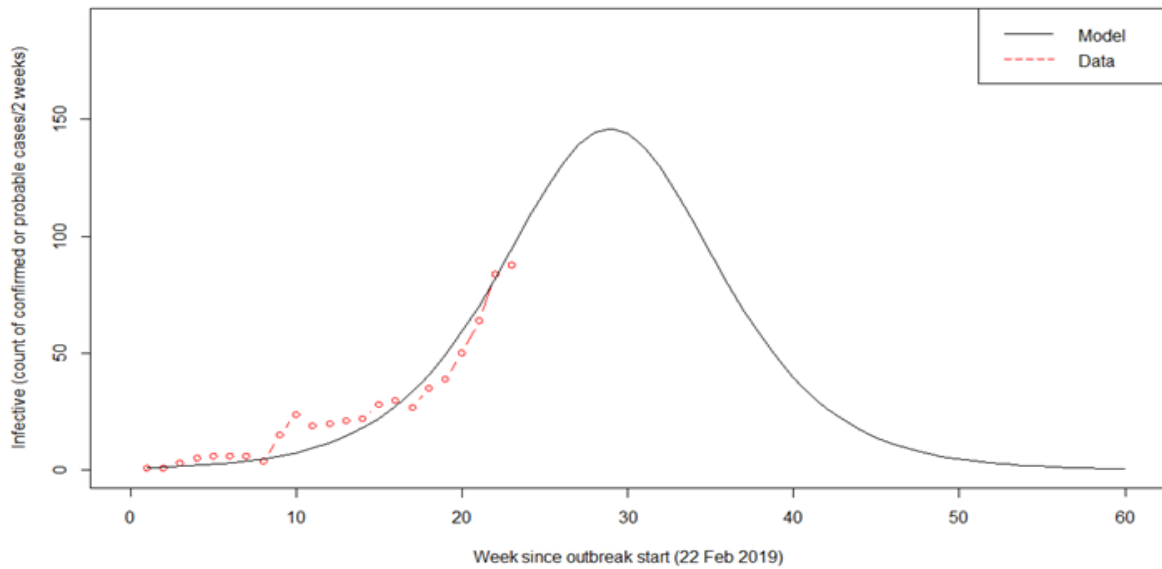


Figure 4. Number of cases of measles confirmed per day. Please note that cases over the weekend are cumulatively notified to the Ministry on a Monday.

