



## SITREP 03

### NATIONAL MEASLES OUTBREAK 2019

Issued: 1500 hrs, 26 AUGUST 2019

IN CONFIDENCE

*New information in red text*

All information is current as of 26 August 2019

#### Situation

1. From 1 January 2019 to 26 August 2019 there have been 779 confirmed cases of measles notified across New Zealand (*Appendix 1*).
2. There is currently a significant measles outbreak in Auckland which commenced in March 2019. As at 26 August 2019, there have been 637 confirmed cases of measles in this region – 435 of which have occurred in Counties Manukau District Health Board (CMDHB) (*Appendix 2*).
3. Laboratory analysis of measles cases shows that the outbreak in Auckland is several outbreaks caused by several different genotypes of the virus.
4. The Auckland outbreaks began in West Auckland but are now mainly occurring in South Auckland, Counties Manukau. In South Auckland, the cases have been mainly in the 0–4 and 20–29 year age groups and predominately in the Pacific population.
5. Most of the cases have been in unvaccinated people or in those who don't know their vaccination status.
6. Public Health Units outside of Auckland are being encouraged to manage measles cases and their contacts as per protocol, with isolation, contact tracing and quarantine to stop the spread of disease. Cases outside of Auckland are all currently linked to travel to or from the Metropolitan Auckland area.
7. Currently there are no issues or concerns with vaccine supply.
8. Since February 2019 a total of 17,020 doses of MMR vaccine have been distributed through Auckland.
9. There have been no deaths associated with this outbreak.

#### Key Actions

*Auckland Region District Health Boards and Public Health Unit*

10. The Auckland region have put in place a number of strategies to increase the population immunity against measles:
  - lowering the age of the first MMR vaccine in the Auckland region from age 15 months to 12 months
  - active recall of children who have not been vaccinated

- opportunistic vaccination of older children and young adults when attending primary care
  - using outreach services to contact 'hard to reach' children
  - opportunistic vaccination at large medical centres and after-hours clinics in Counties Manukau
  - public messaging on the outbreak about who is at risk and how to get vaccinated.
11. In response to the rising numbers of measles cases in Auckland, particularly in young Pacific populations in Counties Manukau, the Ministry has worked closely with CMDHB and ARPHS to finalise and implement a vaccination programme proposal.
  12. The CMDHB proposal is aimed at improving the immunity to measles of the population in the Counties Manukau area. This proposal includes funding an additional five vaccinator nurses to deliver outreach services and opportunistic vaccination in Middlemore hospital. The Ministry has agreed to fund these nurses, a total of \$285,000.
  13. A condition of this funding will be that CMDHB will provide reports to the Ministry detailing the targets and the evaluation of this campaign. **A letter requesting a plan, including monitoring and reporting details, will be sent to CMDHB this week.**
  14. On the commencement of the campaign, CMDHB will provide daily vaccination data to the Ministry which will be included in future SITREPs.

#### *Ministry of Health*

15. The Ministry of Health has implemented a Measles Project Team to manage the ongoing activities in response to this outbreak.
16. The Ministry will be convening a meeting with an expert advisory group on 10 September 2019 to discuss the options on the best way to improve immunity across the New Zealand population.
17. The following options are being considered, aligned with recent advice from our National Verification Committee, initial review of international evidence and previous approaches suggested for improving measles immunity in New Zealand:
  - improving the delivery of all routine childhood MMR immunisations to be on time i.e. given at the time they are due
  - bringing the first MMR forward to 12 months nationwide and the second MMR forward to 15 months
  - supplementary immunisation activities to address the known measles immunity gap (~15 year olds to ~29 year olds)
  - traditional and social media communications campaign targeting key communities and health professionals in support of agreed approaches, this should include targeting travellers into and out of New Zealand.
18. Vaccine availability, impact on existing services and cost implications will be taken into consideration for all options.
19. Although the expert advisory group will be considering the introduction of a 12 month visit for the earlier administration of the first MMR, the Ministry has already

commenced conversations on how this can be implemented between teams within the Ministry. The Ministry will also be socialising the introduction of a 12 month old immunisation visit with key primary care players to ensure there is support for this from the sector.

20. The Ministry is working with CMDHB to establish a scheduled reporting framework to capture the daily vaccination programme data and key information of their response activity for inclusion in the internal Ministry situation reports.
21. **The Ministry will receive reports from CMDHB on Monday, Wednesday and Friday of each week detailing their actions. ARPHS will report to the Ministry on a daily basis with the number of cases in the region.**
22. **A weekly teleconference will take place between the Ministry, CMDHB and ARPHS to ensure** public information management, agency communication and resource management activities are well coordinated. The Ministry is liaising closely and will provide further updates of any additional proposals as part of a broader response to the outbreak.

### **Public Information Management / Media**

23. The Ministry website has been updated with a call-to-action stating “There are currently outbreaks of measles in New Zealand. Immunisation is your best protection against measles and the MMR vaccine is available free from your GP. Make sure you and your whanau are protected - if you are under 50 years and have never had a measles vaccine get vaccinated today.”
24. A draft press release has been produced for the Minister on the funding provided to CMDHB to support their outreach activities. **The content of this press release is being finalised.**
25. The Ministry has updated its advice to primary care providers that they should consider vaccinating children from 12 months of age if they are travelling to Auckland.
26. A Health Advisory will be released early next week with information for those travelling to Auckland. The advisory will contain the advice that infants who will be travelling to Auckland should receive an MMR vaccine at 12 months, and this should be done 2 weeks prior to travel.
27. A press release will be developed to go alongside this Health Advisory.
28. The Public Service Association have requested the Ministry of Social Development provide advice on measles to front line Work and Income staff. Draft advice is being produced by the Ministry for this purpose.

### **Next situation report**

29. The next situation report will be via email at **1500** hrs on **Wednesday 28** August 2019.

---

**Prepared by:** Tara Swadi, Intelligence

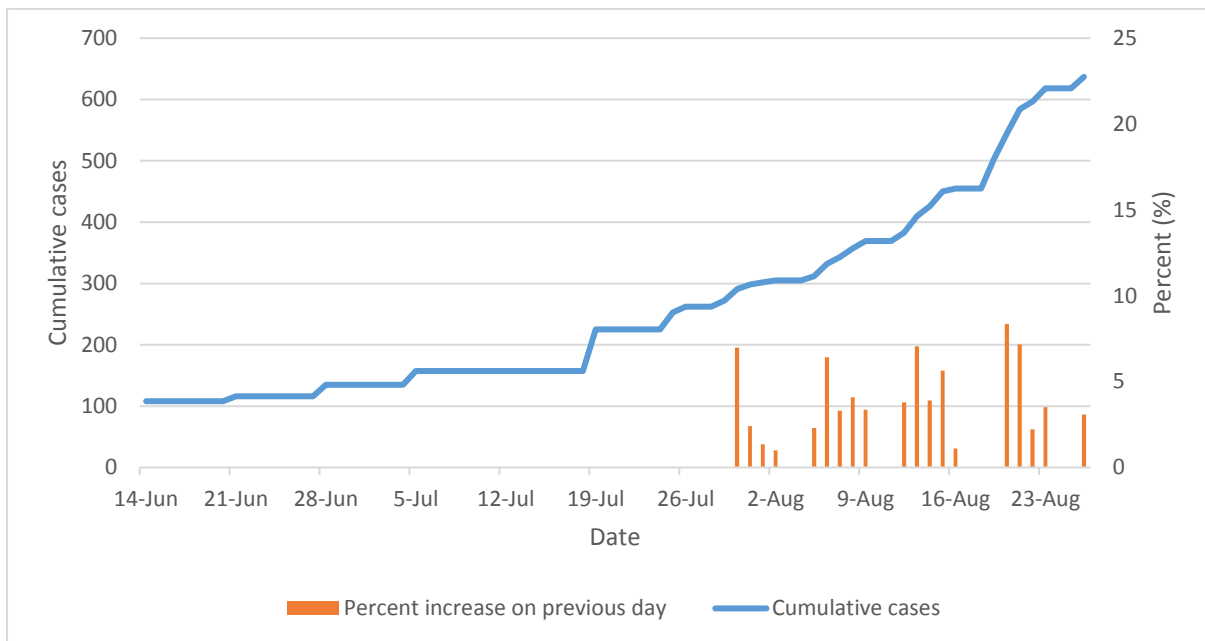
**Approved by:** Sarah Reader, Response Manager

**Appendix 1: Cumulative tally of measles cases across New Zealand**

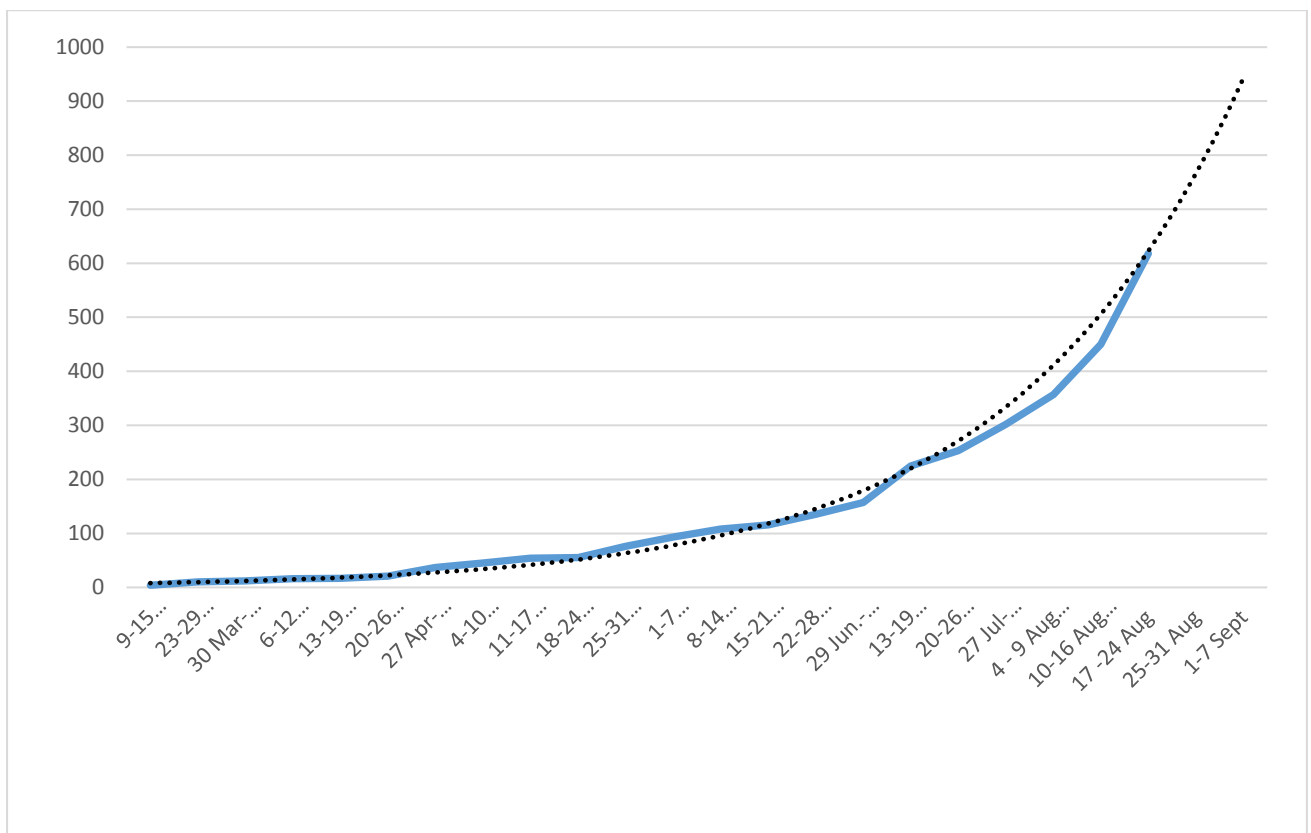
	<b>DHB</b>	<b>Cumulative cases reported 2019 to date (26 August)</b>
<b>DHBs with active measles cases</b>	Northland	<b>23</b>
	Auckland	<b>637</b>
	Waikato	<b>17</b>
	Bay of Plenty & Lakes	<b>32</b>
	Taranaki	<b>3</b>
	Hawkes Bay	<b>3</b>
	Mid-Central	<b>1</b>
	Wellington	<b>19</b>
	Canterbury	<b>41</b>
<b>DHBs with no recent measles cases</b>	Southern	<b>3</b>
		<b>Total: 779</b>

## Appendix 2

**Figure 1.** Cases of measles to 26 August and percent increase in cases per day in the Auckland region

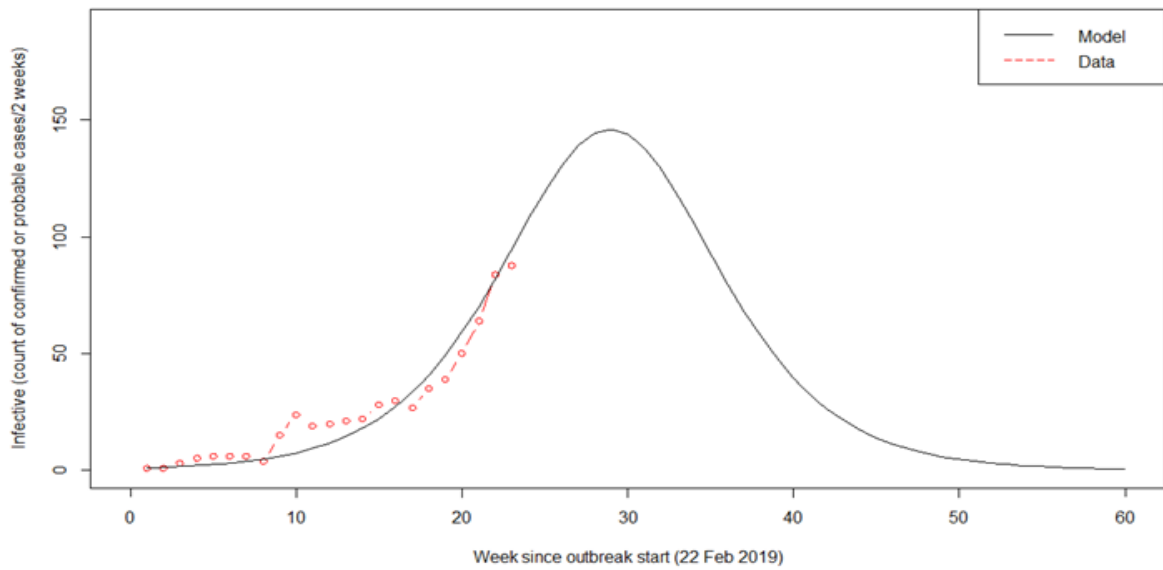


**Figure 2.** Exponential modelling of cases in Auckland per week up to 7 September



**Figure 3.** Mathematical modelling of measles outbreak in Auckland (current and expected)

NOTE: The week beginning 26 August is week 28 of this modelling.



**Figure 4.** Number of cases of measles confirmed per day. *Please note that cases over the weekend are cumulatively notified to the Ministry on a Monday.*

