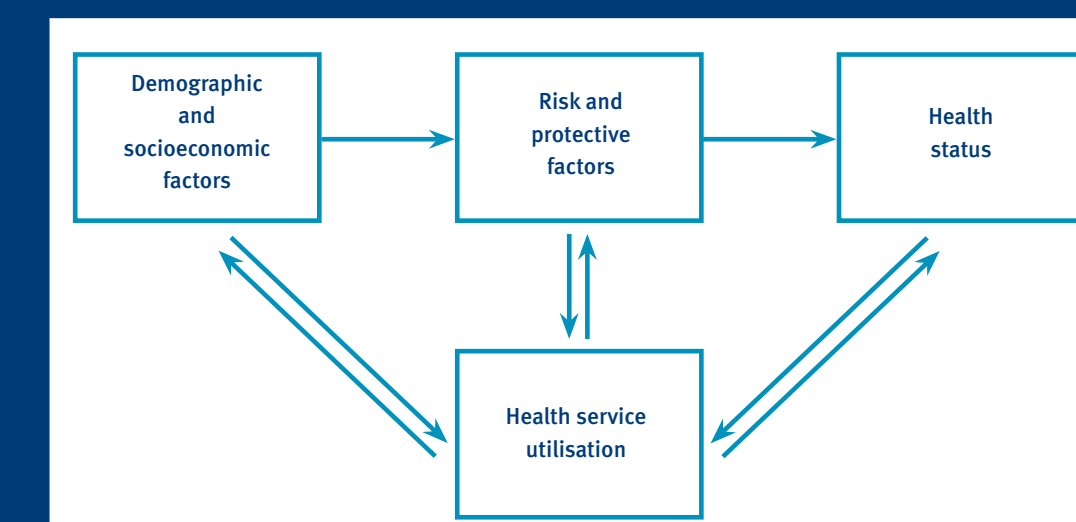
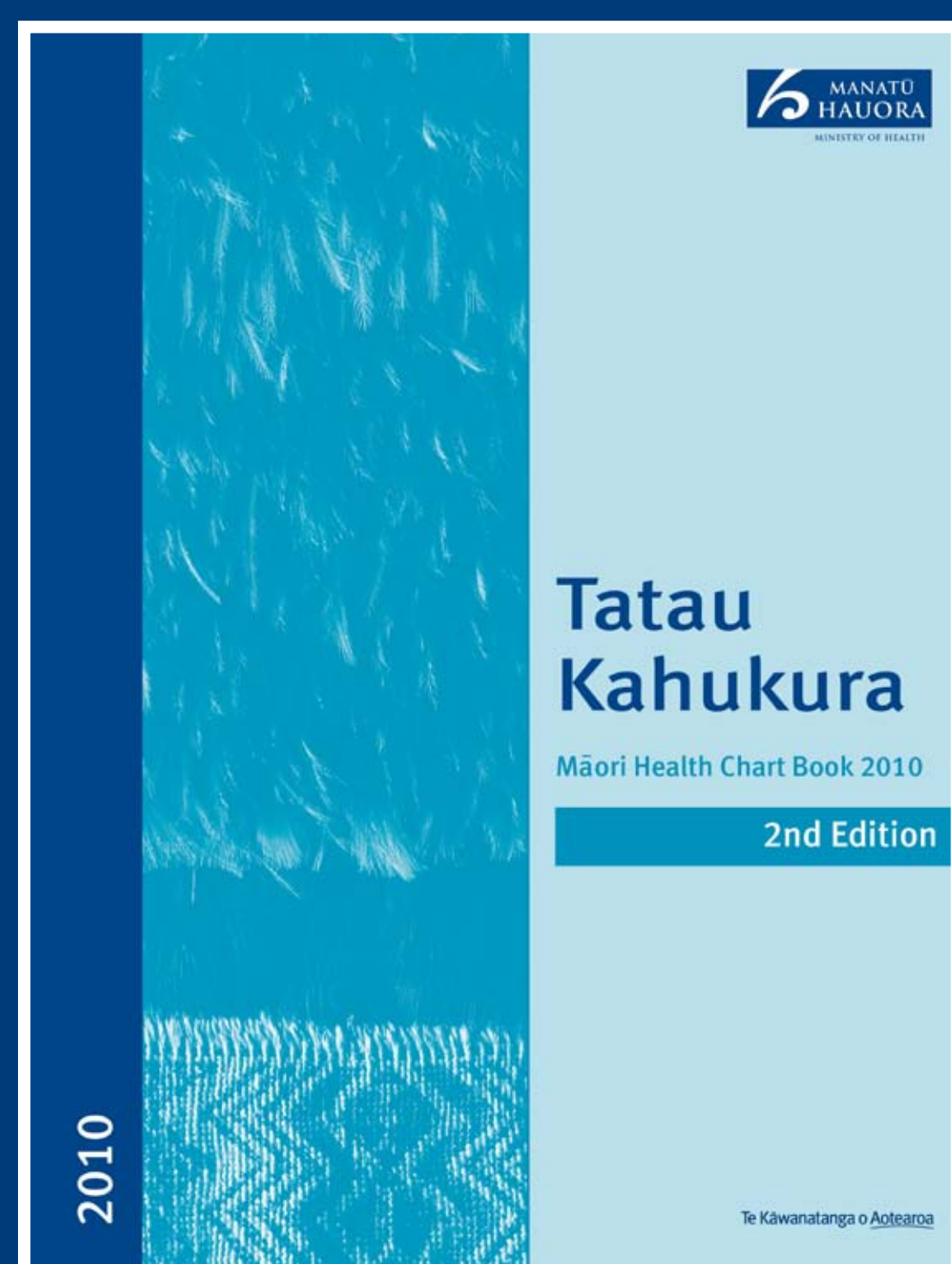


Tatau Kahukura: Māori Health Chart Book 2010 2nd Edition

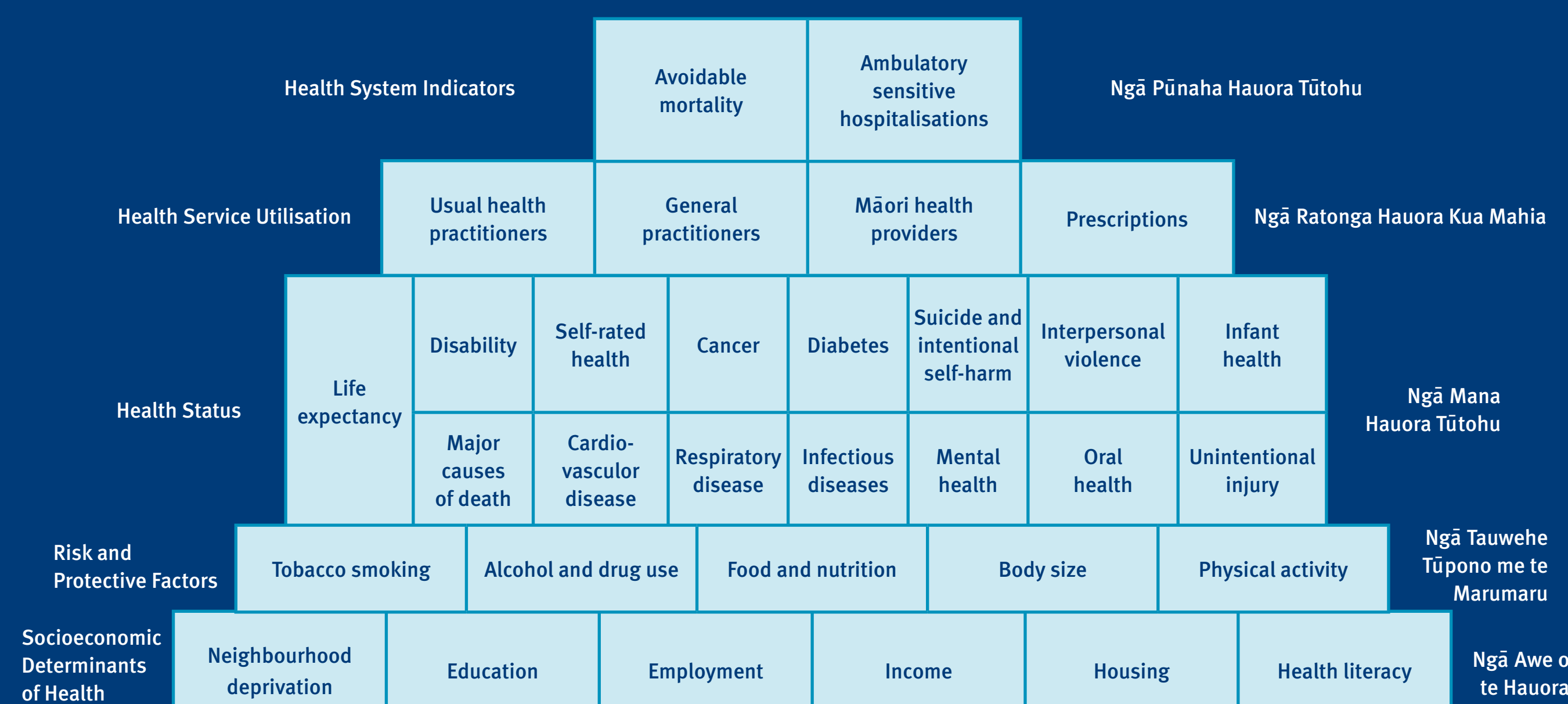


What is Tatau Kahukura 2nd Edition?



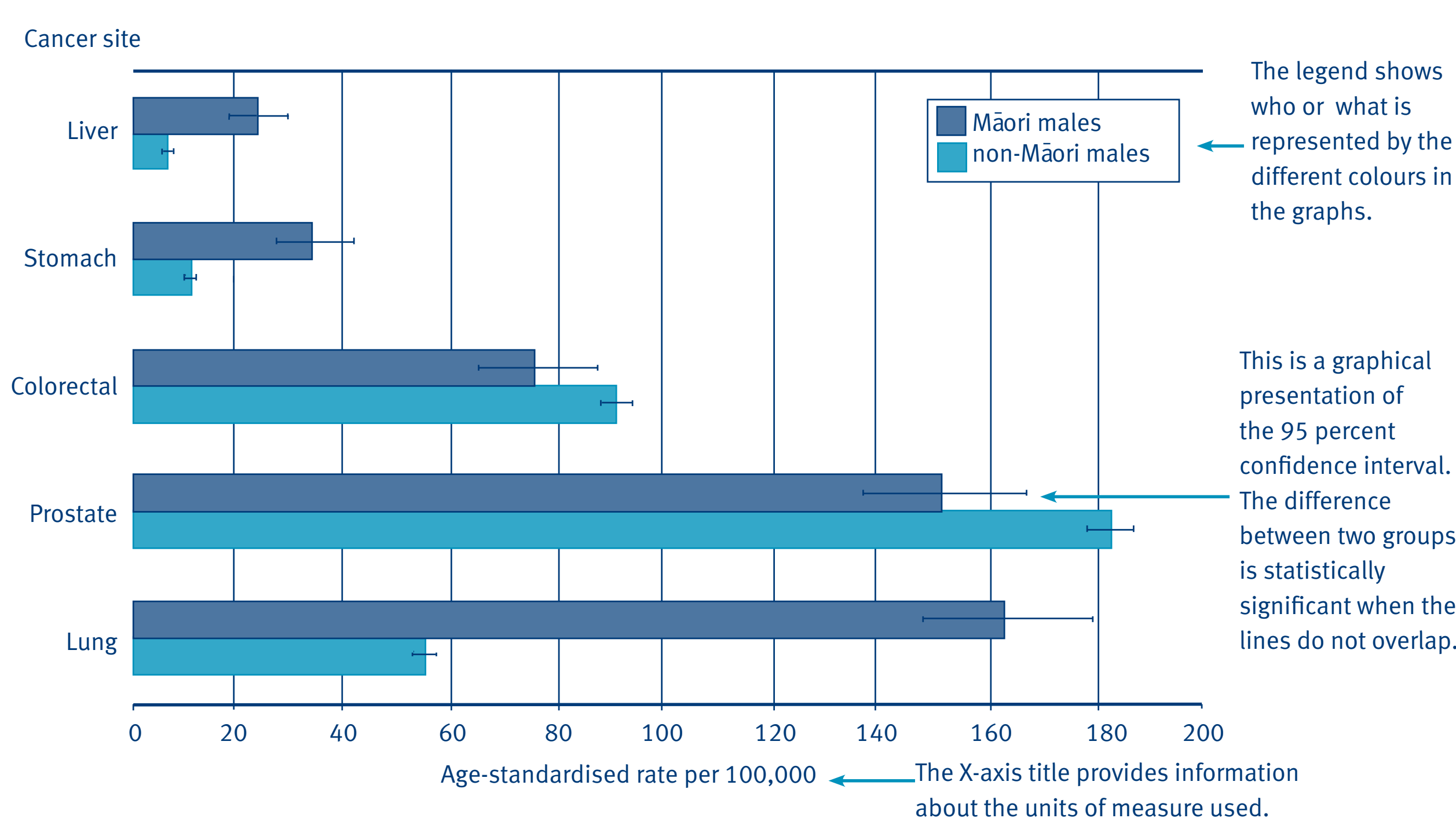
- Provides a snapshot of Māori health in the mid to late 2000s
- Updates the first Māori health chart book released in 2006 based on data from the early 2000s
- Presents key indicators on:
 - socioeconomic determinants of health
 - risk and protective health factors
 - health status
 - health service utilisation
 - health system
- Presents descriptive analysis of the data in an easy-to-use format
- Useful for policy makers, service planners, DHBs, health providers and other agencies

What indicators are in Tatau Kahukura 2nd Edition?



How to interpret figures

Figure Y: Male cancer registration (2004–2006), by site, 25+ years



How to interpret tables

The table's title indicates what the table is about.

Column 1 provides information about the indicator, including name, age group, years of data and type of measure.

Numbered amounts within all other columns relate to prevalence or other rates; for example, proportion of the Māori population at a given time with the disease/condition (prevalence).

The notes provide extra information about the indicators.

The 95 percent CI indicates the range of values that have a 95 percent probability of enclosing the true value.

The sources sit under the notes and acknowledge where the data for each indicator have been sourced from.

Indicator	Māori			non-Māori		
	Males	Females	Total	Males	Females	Total
Asthma hospitalisation, 5–34 years, 2006–08, rate per 100,000 ^{1,3,*}	216.3 (200.2–233.7)	269.6 (252.6–287.7)	245.1 (233.2–257.6)	122.2 (114.6–130.5)	129.7 (121.9–138.0)	126.4 (120.8–132.2)
Diagnosed asthma, 15–45 years, (self-reported) 2006/07, percent ^{1,2,**}	24.4 (20.4–28.5)	29.6 (26.4–32.9)	27.2 (24.7–29.7)	18.4 (16.3–20.5)	20.8 (18.9–22.8)	19.7 (18.3–21.0)

Notes:
 1. Age standardised to 2001 Census total Māori population.
 2. Prioritised Māori ethnic group – see 'Ngā Tapuae me ngā Raraunga: Methods and Data Sources' for further information.
 3. Ethnicity adjusted rate – see 'Ngā Tapuae me ngā Raraunga: Methods and Data Sources' for further information.

Sources:
 * Ministry of Health
 ** 2006/07 New Zealand Health Survey

How is the data analysed?

- Indicators are presented as age-standardised rates, rate per 100, per 1000 or per 100,000
- Rates are standardised to the 2001 Census Māori population
- Most indicators compare Māori with non-Māori using prioritised ethnicity
- Māori hospitalisations were estimated using customised adjusters
- For most indicators, data are presented by gender and across all ages in the population
- Age-standardised rate ratios (RR) use the non-Māori population as the reference population
eg. A RR of 1.5 means the rate is 1.5 times higher for Māori compared to non-Māori
- 95% confidence intervals are given for rates and RRs

Where can I find out more?

Order your copy of *Tatau Kahukura: Māori Health Chart Book 2010 2nd Edition* by emailing moh@wickcliffe.co.nz or calling (04) 496 2277 (quoting HP number 5097) or download at www.maorihealth.govt.nz