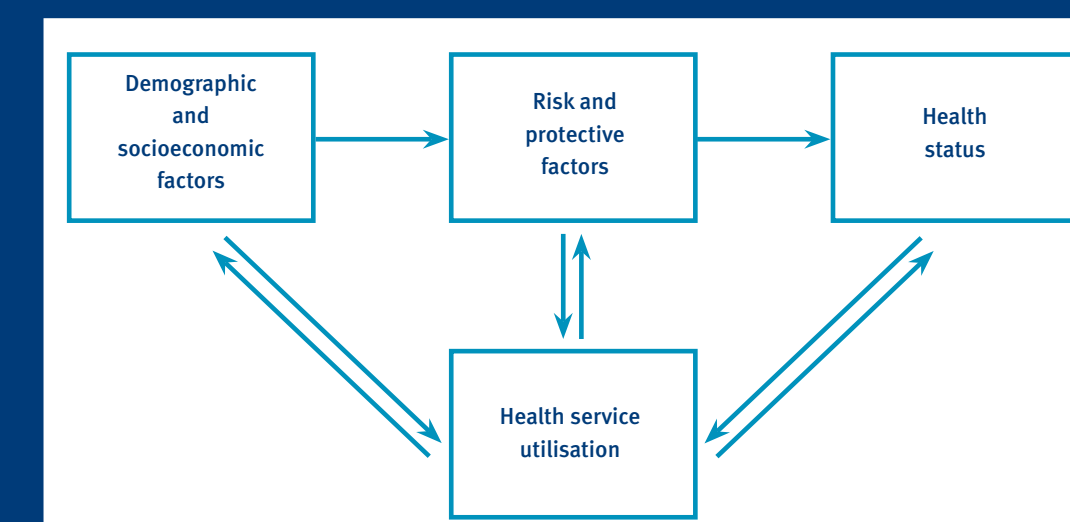
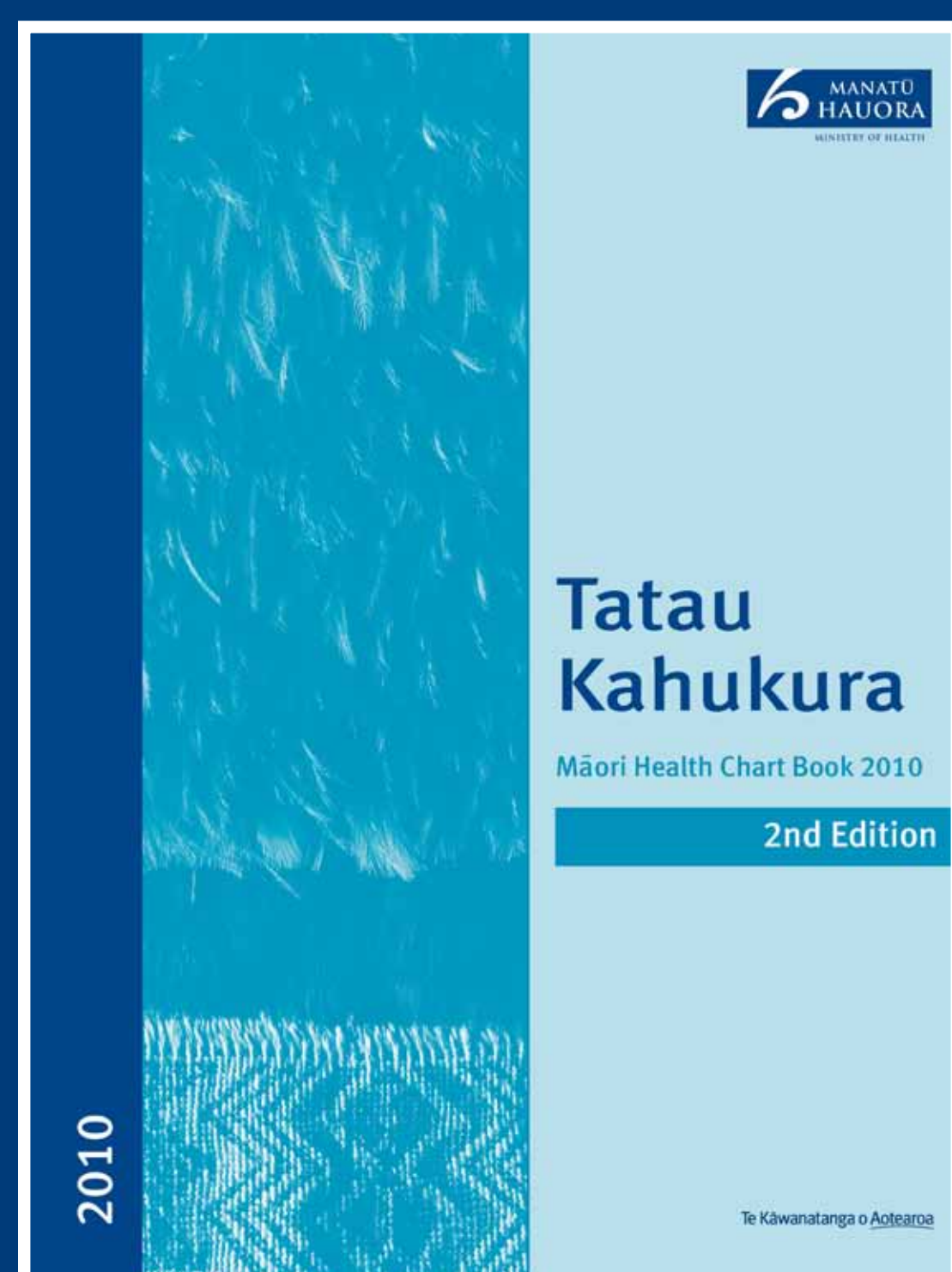


Tatau Kahukura: Māori Health Chart Book 2010 2nd Edition

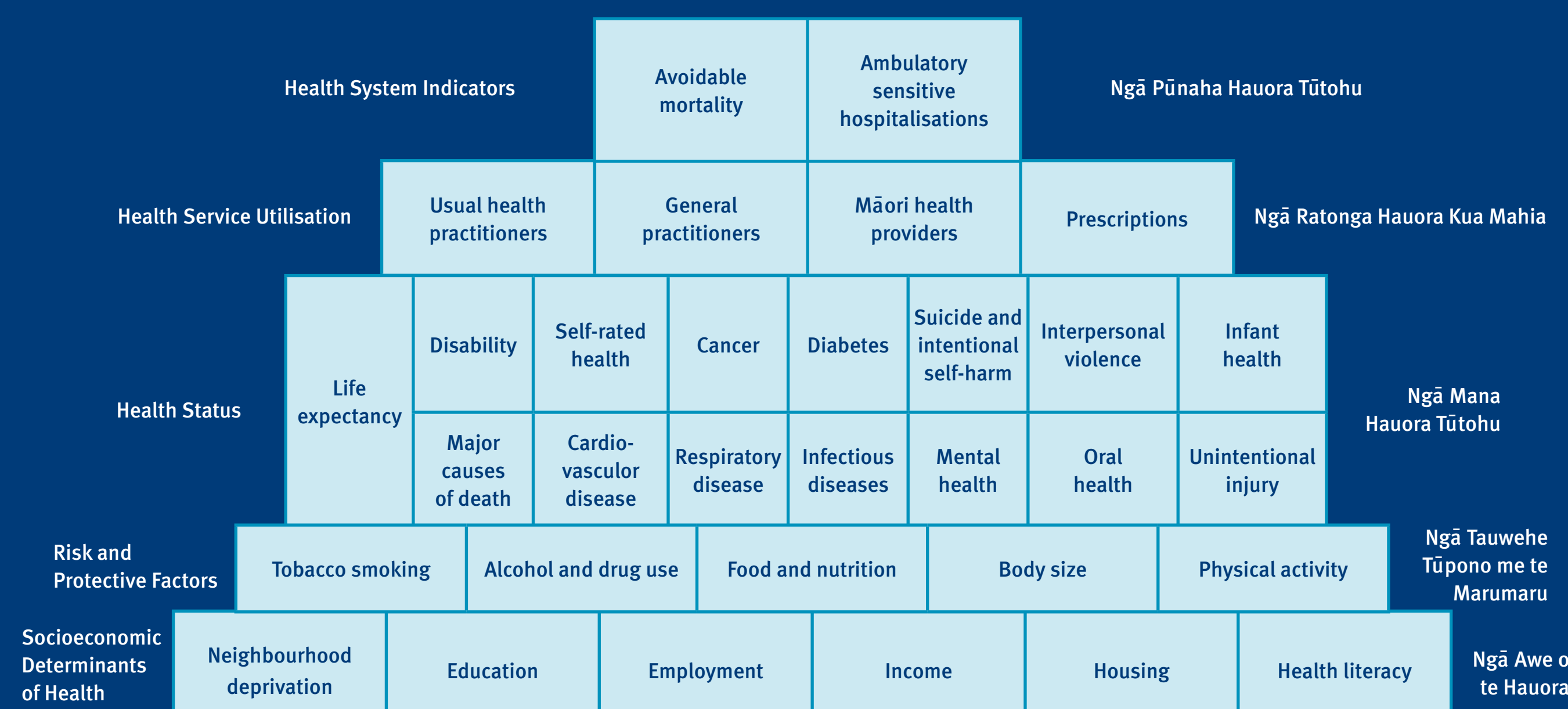


He aha te Tatau Kahukura Tuarua?



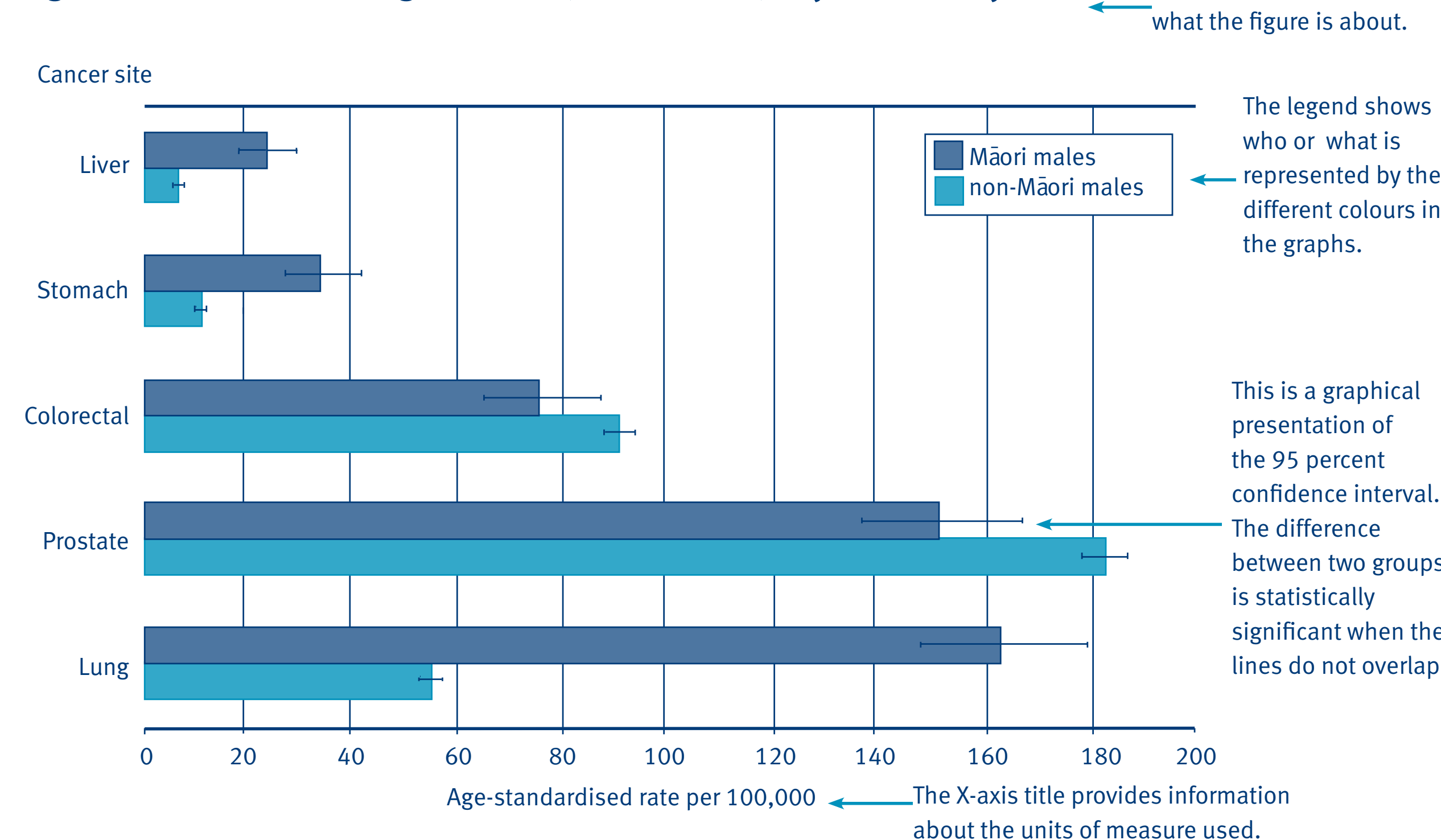
- He pukapuka whakātu i te Hauora o te Māori i ngā tau o te rua mano
- Ngā tohu matua whakātu ana ko
 - Ngā Awe o te Hauora
 - Ngā Tauwehe Tūpono me te Marumaru
 - Ngā Mana Hauora Tūtohu
 - Ngā Rātonga Hauora Kua Mahia
 - Ngā Pūnaha Hauora Tūtohu
- He whakamārama i ngā whakāturanga i roto i tētahi reo marama
- He taonga pai mā ngā rōpu mahi kaupapa here, ratonga whakatakoto kaupapa, Pōari Hauora ā Rohe hoki

He aha ngā tūtohu o Tatau Kahukura Tuarua?



Me pehea te whakamāori i ngā whika?

Figure Y: Male cancer registration (2004–2006), by site, 25+ years



Me pehea te whakamāori i ngā rīpanga?

The table's title indicates what the table is about.

Column 1 provides information about the indicator, including name, age group, years of data and type of measure.

Numbered amounts within all other columns relate to prevalence or other rates; for example, proportion of the Māori population at a given time with the disease/condition (prevalence).

Table X: Asthma indicators

Indicator	Māori			non-Māori		
	Males	Females	Total	Males	Females	Total
Asthma hospitalisation, 5–34 years, 2006-08, rate per 100,000 ^{1, 3, *}	216.3 (200.2–233.7)	269.6 (252.6–287.7)	245.1 (233.2–257.6)	122.2 (114.6–130.5)	129.7 (121.9–138.0)	126.4 (120.8–132.2)
Diagnosed asthma, 15–45 years, (self-reported) 2006/07, percent ^{1, 2, **}	24.4 (20.4–28.5)	29.6 (26.4–32.9)	27.2 (24.7–29.7)	18.4 (16.3–20.5)	20.8 (18.9–22.8)	19.7 (18.3–21.0)

Notes:

1. Age standardised to 2001 Census total Māori population.
2. Prioritised Māori ethnic group – see 'Ngā Tapuae me ngā Raraunga: Methods and Data Sources' for further information.
3. Ethnicity adjusted rate – see 'Ngā Tapuae me ngā Raraunga: Methods and Data Sources' for further information.

Sources:

- * Ministry of Health
- ** 2006/07 New Zealand Health Survey

The notes provide extra information about the indicators.

The 95 percent CI indicates the range of values that have a 95 percent probability of enclosing the true value.

The sources sit under the notes and acknowledge where the data for each indicator have been sourced from.

Me pehea te tātari i ngā raraunga?

- Ka whakarititia ngā tūtohu ki ngā whakamātau e pā ana ki ngā tau o ngā tāngata ia 100, ia 1000 ara ia 100,000.
- Ka whakamātautia tēnei ki te 2001 Kautenui Māori.
- Te nuinga o ngā tūtohu whakarite ai i ngā Māori me ngā tāngata tauwi i runga i te mea tuatahi o ngā mātāwaka.
- I whakārohia ngā hohiperatanga o ngā Māori i ngā tikanga whakatikatika.
- Te nuinga o ngā tūtohu, ka whakātuhia i te ira tangata mo ngā tau katoa o ngā tāngata katoa.
- Age-standardised rate ratios (RR) use the non-Māori population as the reference population e.g A RR of 1.5 means the rate is 1.5 times higher for Māori compared to non-Māori.
- 95% confidence intervals are given for rates and RRs.

Kei hea ētahi atu kōrero?

Tikina tō kape o *Tatau Kahukura: Māori Health Chart Book 2010 2nd Edition* i runga i te emera moh@wickliffe.co.nz ara waea rānei (04) 496 2277 (korero HP nama 5097) ara tango mai i te ipurangi www.maorihealth.govt.nz