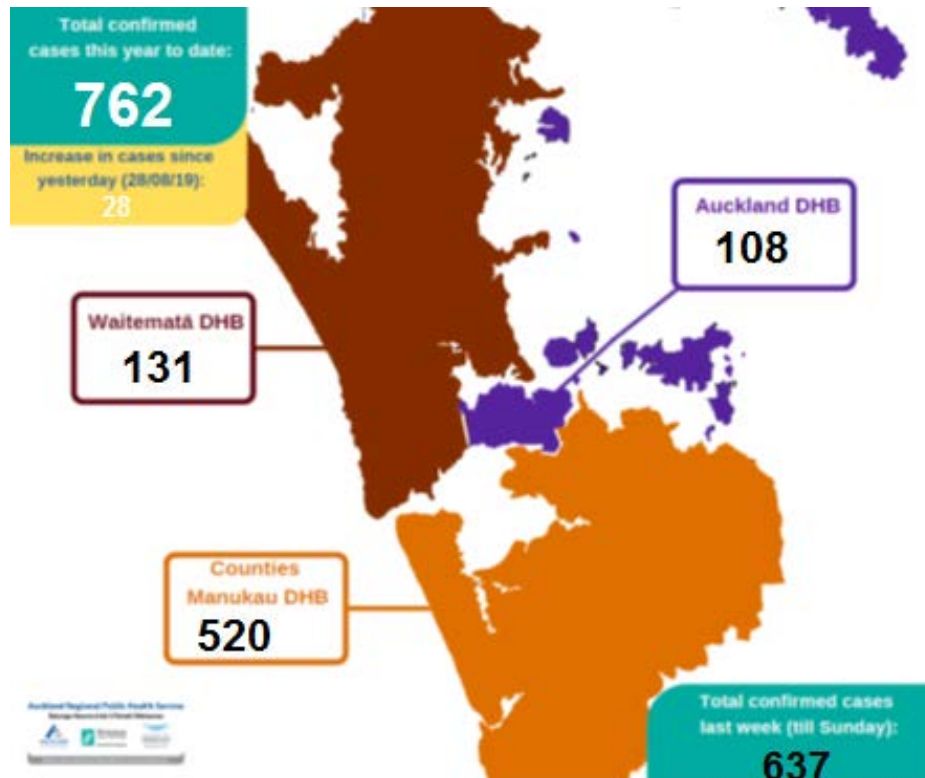


1.1 Measles update

Action: No action required. This information is for noting.

Item: As at 30 August 2019, the number of confirmed measles cases for the year in the Auckland region is 762 (759 are Auckland residents plus three from outside of Auckland region - a visual breakdown by area is below).



Sporadic cases continue to occur throughout the rest of the country.

Please be advised the National Health Coordination Centre (NHCC) has been activated in response to the current Measles outbreak. The NHCC will be operational between the hours of 8am and 5pm, from Monday to Friday until further notice. Situation reports will be provided to the relevant Ministers' offices every Monday, Wednesday and Friday at 3pm.

Contact: Deborah Woodley, Deputy Director-General, Population Health and Prevention, s 9(2)(a)

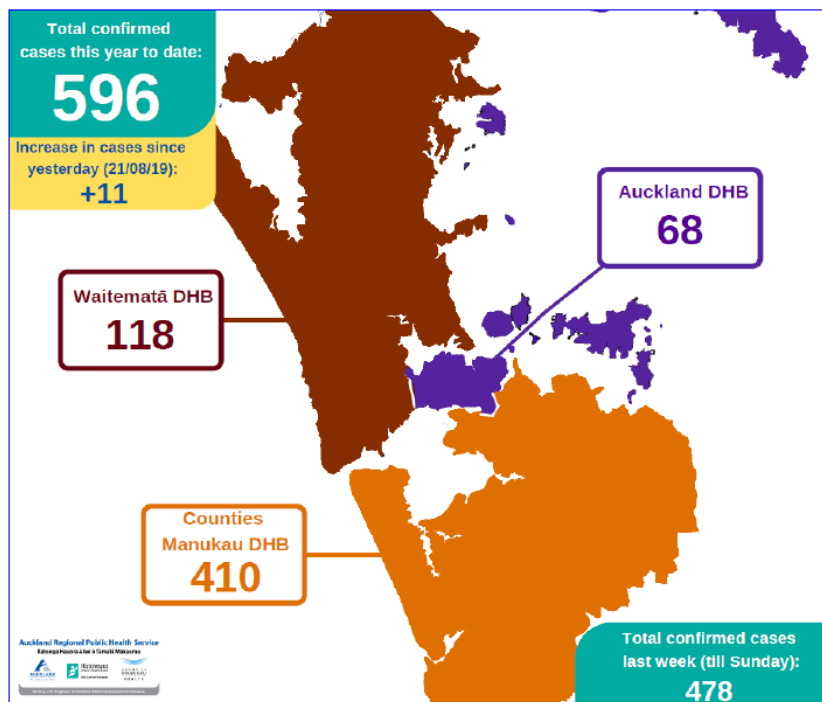
1.2 Measles national cases update

Action: No action required. This information is for noting.

Item: From 1 January to 22 August 2019, there have been 729 confirmed cases of measles notified in New Zealand. From 19 – 21 August 2019, 143 cases were reported to the Ministry: one each in Waikato and Northland, and 141 in Auckland.

Auckland

As at 22 August 2019, the number of confirmed measles cases for the year in the Auckland region is 596 (a visual breakdown by area is below).



The Auckland cases have the following demographic and ethnicity profiles as at 22 August 2019:

| *Ethnicity breakdown | | Percentage |
|----------------------|-----|------------|
| Asia | 28 | 4.7% |
| European | 152 | 25.5% |
| Māori | 155 | 26.0% |
| MELAA | 6 | 1.0% |
| Pacific People | 282 | 47.3% |
| Residual categories | 50 | 8.3% |
| Age Breakdown | | |
| 0-4 years | 205 | |
| 5-14 years | 54 | |
| 15-29 years | 249 | |
| 29+ years | 89 | |
| DHB Breakdown | | |
| Auckland | 68 | |
| Waitemata | 118 | |
| Counties | 410 | |

**patients can identify with more than one ethnicity*

237 of the 596 confirmed cases reported up to 22 August 2019 have been hospitalised including 3 people who are currently in hospital.

There are two different strains of the measles virus causing current outbreaks in Auckland.

High MMR vaccination coverage across Auckland region is crucial to bringing the measles outbreak under control as it reduces the number of susceptible individuals. To assist with managing the measles outbreak Auckland Regional Public Health Service and the three metro-Auckland DHBs have:

- brought forward the 15-month-old MMR vaccination to 12 months, using active recall
- prioritised routine immunisation recall for children up to four years of age who have not had one MMR vaccination
- been offered opportunistic immunisation by practices in Counties Manukau DHB for anyone aged 1- 50; some practices have carried out active recall for Pacific and/or Māori patients

- developed targeted communication material to increase coverage within the community. These have been developed in a number of different languages including Samoan and Tongan
- used social media for publicity.

The above measures have been beneficial and there has been an increase in the number of MMR doses given in the last four months.

In particular, from 1 to 16 August 2019, 17,020 doses were delivered in Auckland compared to 5,900 doses in August 2018.

On 19 August 2019, the Ministry approved one off funding of \$285,000 to support Counties Manukau provide additional outreach services and nurse vaccinators including at Middlemore Hospital. Counties Manukau has proposed this will fund five additional vaccinators and a support worker to strengthen the vaccination coverage initiative. It is expected that outreach services will be deployed to areas such as churches, sporting events, shopping malls and large, youth employers.

Contact: Deborah Woodley, Deputy Director-General, Population Health and Prevention,
s 9(2)(a)

Weekly Report 19 – 23 August 2019

1.3 Measles cases national update

Action: No action required. This information is for noting.

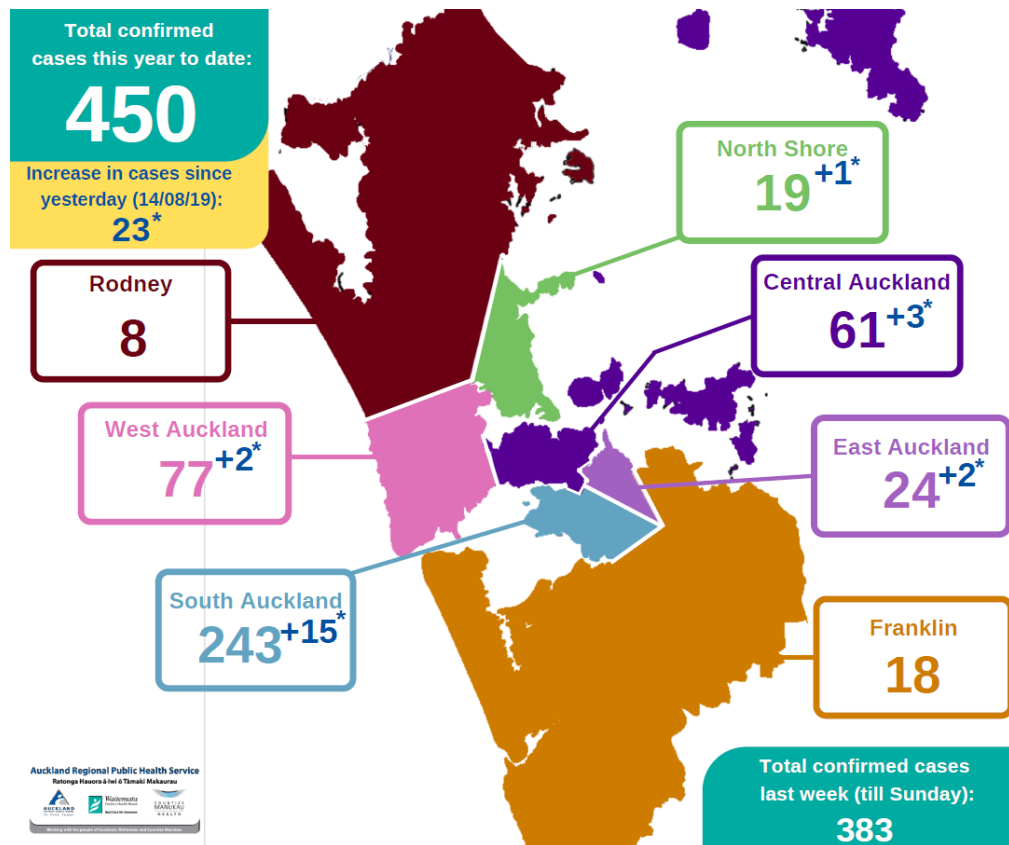
Situation: From 1 January to 15 August 2019, there have been 581 confirmed cases of measles notified in New Zealand. Out of these, 104 new cases were reported to the Ministry from 3 – 15 August 2019. These are outlined in the table below:

National measles cases

| | DHB | Cumulative cases reported <u>2019 to date</u> | New cases reported in the last 2 weeks |
|--|-----------------------|---|--|
| DHBs with active measles cases | Northland | 23 | 1 |
| | Auckland | 450 | 99 |
| | Waikato | 16 | 0 |
| | Bay of Plenty & Lakes | 25 | 0 |
| | Taranaki | 2 | 1 |
| | Hawkes Bay | 2 | 0 |
| | Mid-Central | 1 | 0 |
| | Wellington | 19 | 3 |
| | Canterbury | 41 | 0 |
| DHBs with no recent measles cases | Southern | 2 | No confirmed cases since March 2019 |
| | | Total: 581 | New total for this week: 104 |

Auckland

As at 15 August 2019, the number of confirmed measles cases for the year in the Auckland region is 450 (a visual breakdown by area is below).



Counties Manukau response

In response to the rising numbers of measles cases in Auckland, particularly in young Pacific populations in Counties Manukau, the Ministry is working with Counties Manukau DHB (CMDHB) and Auckland Regional Public Health Service (ARPHS) on a proposal for a vaccination programme.

The focus of this vaccination programme would be to facilitate access to the measles, mumps, and rubella (MMR) vaccine to population groups vulnerable (0 – 4 years and 15 – 29 years) where immunity gaps have been identified.

Implementing a targeted vaccination programme during an outbreak can be highly effective at improving immunity due to the increased awareness around the risk of the infectious disease. Improved immunisation coverage is the most effective way to prevent or minimise the impact of current and future outbreaks.

The proposal is currently being assessed by the Ministry and focuses on actions that could be initiated immediately. These include:

- a local targeted six months immunisation programme focused on unimmunised Pacific and Māori children (0 – 4 years) and young people (15 – 29 years).
- a six-month immunisation programme targeting those attending Middlemore Hospital and their whānau.

The proposal may inadvertently result in more pressure on primary care services. The Ministry is working with CMDHB on funding a finalised proposal, and particularly the contribution the Ministry might consider.

A finalised proposal is expected during the week of 19 August 2019.

Regional and national response

In addition to the local response in Counties Manukau, the Ministry is considering regional and national requirements to prevent spread and prevent future outbreaks.

The Ministry convened a meeting of the Northern Region Emergency Planners on 15 August 2019 to discuss current service delivery pressures and options for strengthening the coordination of measles outbreak activities in the region.

The agreed recommendations from this meeting include the establishment of three targeted work streams to enable and support collaboration and resource sharing in the metropolitan area.

The recommendations have been escalated to the senior leadership of the metropolitan DHBs and ARPHS for approval. The Ministry will continue to support the ongoing development and delivery of these coordination activities.

For regions outside of Auckland, the Ministry recommends a focus on maintaining the immunisation schedule, actively managing sporadic cases, and continuing to address the immunity gaps through promotion and opportunistic vaccination.

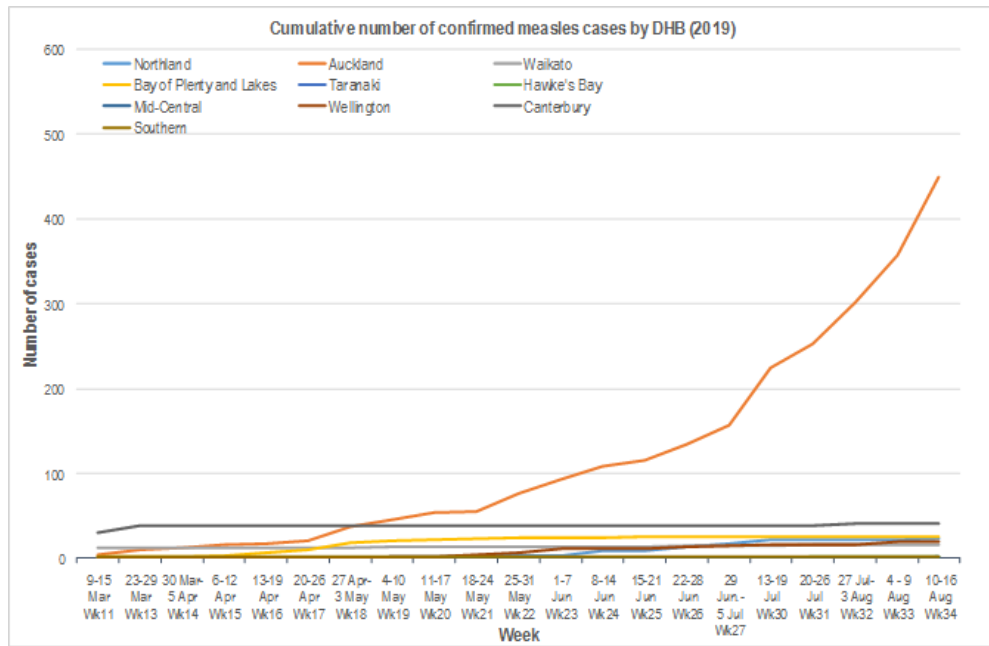
Medium- and longer-term options to improve access to the vaccine and address the immunity gaps require more complex analysis and consideration in terms of effectiveness and logistics. The Ministry has implemented a project team to support the activities related to the existing response, as well as develop a longer-term approach.

Other DHBs with active measles cases

A total of five cases have been confirmed involving Northland (one), Taranaki (one) and Wellington (three) all involving people who travelled from Auckland.

In Southern DHB, an immunocompromised, unimmunised patient who was a close contact of a confirmed measles case from Auckland is in isolation and was put under observation in Dunedin Hospital. The patient is suspected to have measles, but it has not been confirmed.

No new cases have been reported in Waikato, Bay of Plenty and Lakes, Mid-Central, and Hawkes Bay.



Contact: Deborah Woodley, Deputy Director-General, Population Health and Prevention, s 9(2)(a)

Weekly Report 5 – 9 August 2019

1.4 Measles cases national update

Action: No action required. This information is for noting.

Situation: From 1 January to 1 August 2019, there have been 378 confirmed cases of measles notified in New Zealand. Thirty-four new cases were reported to the Ministry in the last week. These are outlined in the table below:

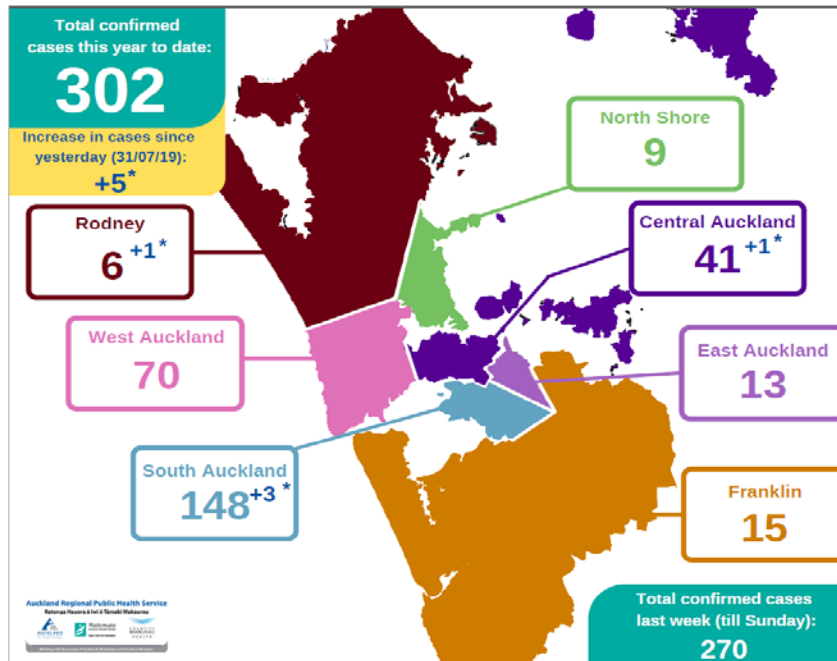
National measles cases

| | DHB | Cumulative cases reported <u>2019 to date</u> | New cases reported in the last 2 weeks |
|------------------------------------|-----------------------|---|--|
| DHBs with active measles cases | Northland | 22 | 0 |
| | Auckland | 302 | 32 |
| | Waikato | 16 | 0 |
| | Bay of Plenty & Lakes | 25 | 0 |
| | Taranaki | 1 | 0 |
| | Hawkes Bay | 2 | 0 |
| | Mid-Central | 1 | 0 |
| | Wellington | 16 | 0 |
| | Canterbury | 41 | 2 |
| DHBs with no recent measles cases* | Southern | 2 | No confirmed cases since March 2019 |
| | | Total: 378 | New total for this week: 34 |

*No new cases have been notified for at least 42 days (two incubation periods of the virus)

Auckland

As of 1 August 2019, the number of confirmed measles cases for the year in the Auckland region is 302 (a visual breakdown by area is below).



Most new cases are being notified in South Auckland with an ongoing predominance of cases in Pacific people and children under two.

The number of measles cases continues to increase, and focused control activities are now not able to contain the outbreak. Auckland Regional Public Health Service (ARPHS) have moved to the 'manage it' phase with the intention of reducing the impact of measles by improving immunisation coverage, particularly in the most affected population groups.

General awareness has increased measles, mumps and rubella (MMR) vaccination uptake (35,000 doses of MMR were given between 1 February and 5 July 2019 compared to 24,000 during the same period in 2018).

Primary care services across the Auckland region have been actively recalling all children under four that are not up to date with their MMR vaccinations and the date of first vaccination has been brought forward from 15 months to 12 months.

Counties Manukau DHB, ARPHS and the Ministry are working together to develop a vaccination strategy to target harder to reach at-risk population groups.

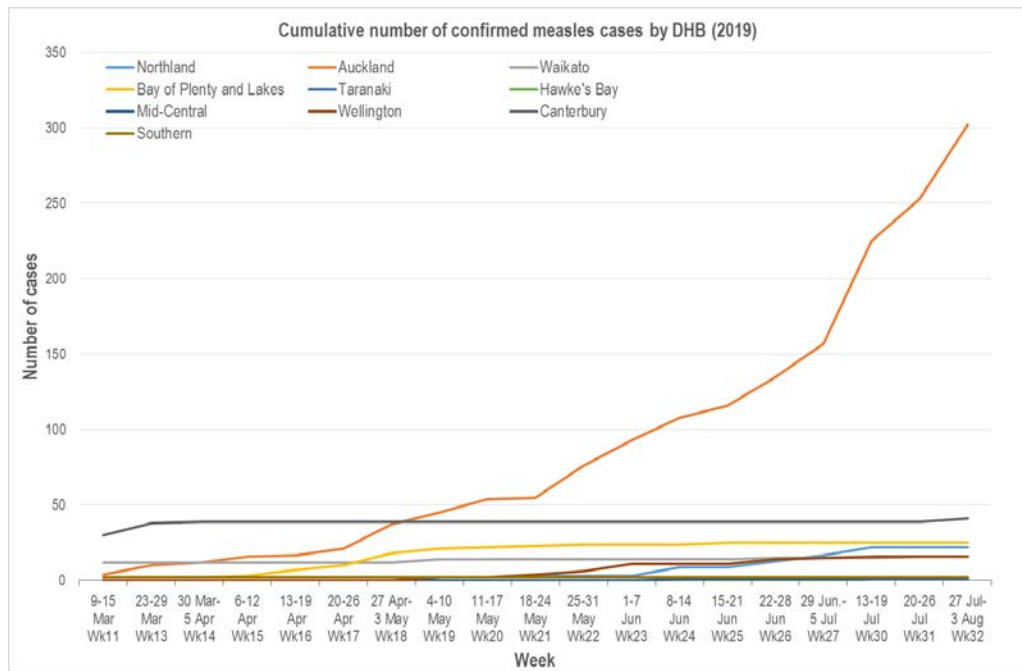
ARPHS distributed information packs for schools and early learning services.

Other DHBs with active measles cases

Community and Public Health reported two new confirmed measles cases in Canterbury. The first case is an 11-month-old infant that contracted measles while in Auckland, and the second case is a 25-year-old female who is a family contact of the infant. She has been in isolation throughout her infectious period.

The situation is under control and no probable cases exist at this point.

No new cases have been reported in Northland, Waikato, Bay of Plenty and Lakes, Mid-Central, Hawkes Bay and Wellington.



Contact: Deborah Woodley, Deputy Director-General, Population Health and Prevention, s 9(2)(a)

Weekly Report 29 July – 2 August 2019

1.5 Measles cases national update

Action: No action required. This information is for noting.

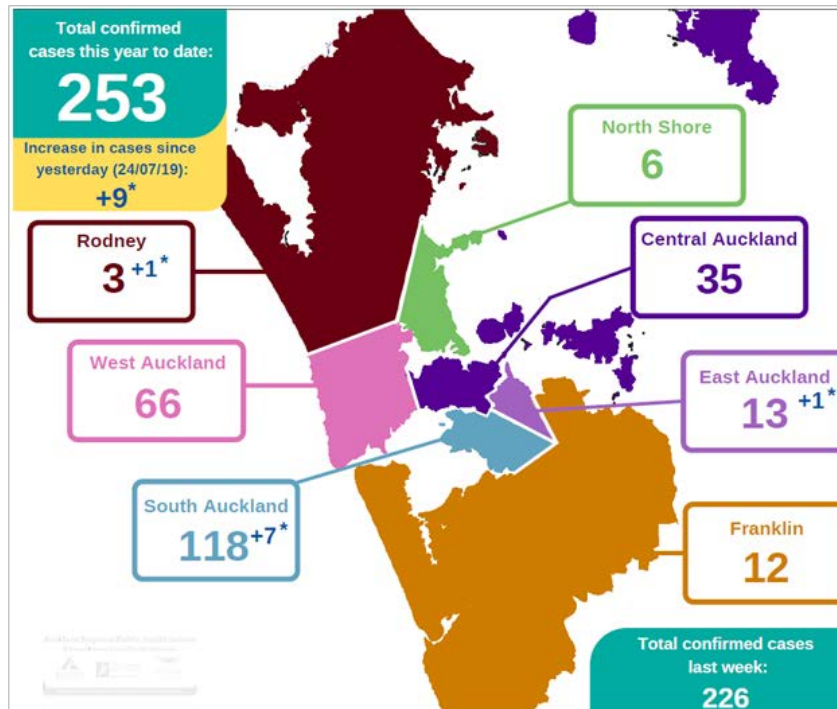
Situation: From 1 January to 26 July 2019, there have been 377 confirmed cases of measles notified in New Zealand. Thirty new cases were reported to the Ministry in the last week. These are outlined in the table below.

Table: National measles cases

| | DHB | Cumulative cases reported from 1 Jan 2019 to date | New cases reported in the last week |
|---|-----------------------|---|--|
| DHBs with active measles case management | Northland | 22 | 0 |
| | Auckland | 253 | 28 |
| | Waikato | 16 | 1 |
| | Bay of Plenty & Lakes | 25 | 0 |
| | Taranaki | 1 | 0 |
| | Hawke's Bay | 2 | 1 |
| | Mid-Central | 1 | 0 |
| | Wellington | 16 | 0 |
| DHBs with no recent confirmed cases | Canterbury | 39 | No confirmed cases since March. Outbreak over. |
| | Southern | 2 | No confirmed cases since March. |
| | | Total: 377 | Total: 30 |

Auckland

As of 26 July 2019, the number of confirmed measles cases for the year in the Auckland region is 253 (a visual breakdown by area is below).



Most new cases are being notified in South Auckland with an ongoing predominance of cases in Pacific people and children under two.

The number of measles cases continues to increase and focused control activities are now not able to contain the outbreak. Auckland Regional Public Health Service (ARPHS) have moved to the 'manage it' phase with the intention of reducing the impact of measles by improving immunisation coverage, particularly in the most affected population groups.

General awareness has increased measles, mumps and rubella (MMR) vaccination uptake (35,000 doses of MMR were given between 1 February and 5 July 2019 compared to 24,000 during the same period in 2018).

Primary care services across the Auckland region have been actively recalling all children under four that are not up to date with their MMR vaccinations and the date of first vaccination has been brought forward from 15 months to 12 months.

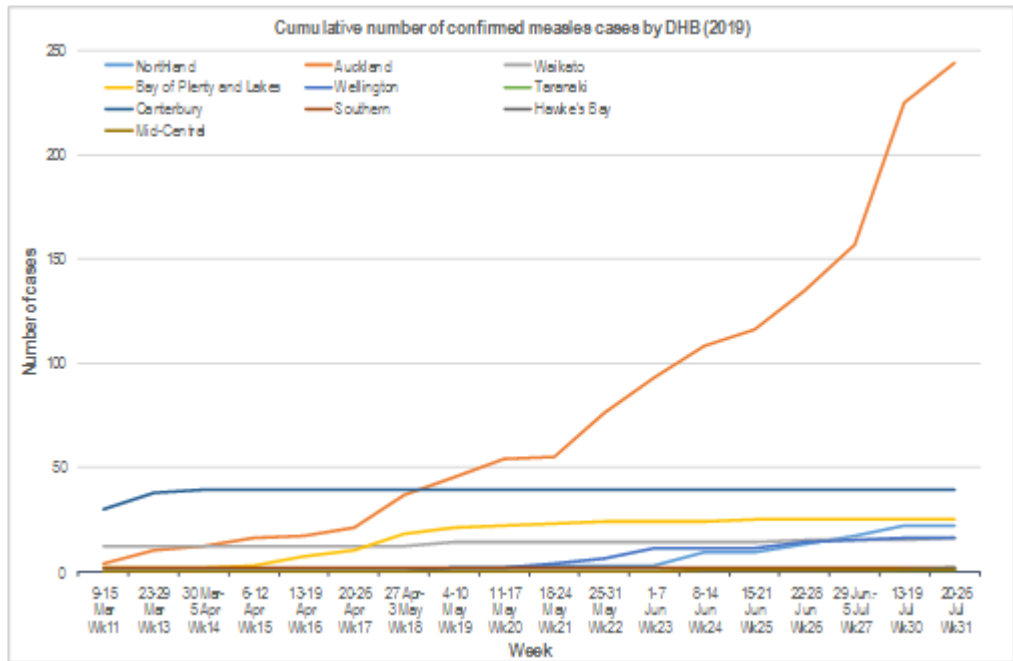
Counties Manukau DHB, ARPHS and the Ministry are working together to develop a vaccination strategy to target harder to reach at-risk population groups.

ARPHS has been providing information packs for schools and parents as students return from their school term-break.

Other DHBs with active measles cases

One new case was reported in Hawke's Bay in the last week. The person is the father of the case confirmed last week which was linked to the Auckland outbreak. Hawke's Bay Public Health Unit are conducting contact tracing to manage the spread.

Similarly, one new case was reported in Taranaki in the last week. The person is the sibling of the case confirmed last week, which was linked to the Auckland outbreak. There is no concern of a further spread of measles in the wider community, as both cases are in isolation.



Contact: Deborah Woodley, Deputy Director-General, Population Health and Prevention, s 9(2)(a)